

115 Shirt

Sizes 34, 36, 38, 40, 42

Back length approx. 62 cm (24 1/2 ins)

Materials

Fine corduroy,
width: 150 cm (59 ins)
length: 1.40 m (1 5/8 yds) for all sizes.

Interfacing.

Vilene Bias Tape/stay tape.

10 buttons.

Recommended fabrics: Fine corduroys, lightweight denims.

Preparations

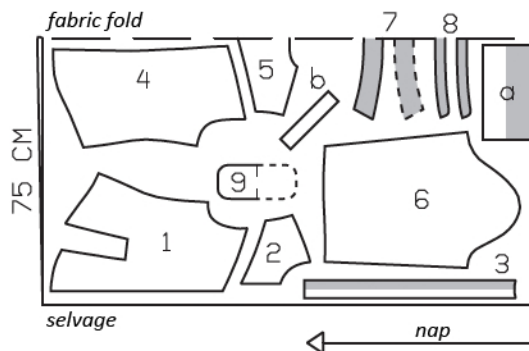
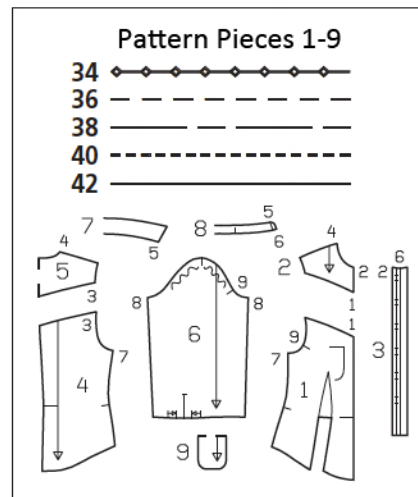
Print the pattern out on letter or A4 sized paper. It is **very important** to not scale or fit any of the pages, you must print the document in **actual size**. Your pattern will print on multiple pages, which you will then tile together. Arrange the sheets on a large, hard and flat surface matching up the numbers and letters (i.e. 6A to 6A). Cut or fold one of the sides and match the edge to it's corresponding side. Then, tape down in place so paper is secure.

Trace the pattern pieces from the pattern sheet following the lines and markings for your size.

The buttonholes on piece 3 are marked for size 34. For sizes 36 – 42, mark the top buttonhole the same distance from upper edge as for size 34. The bottom buttonhole is the same for all sizes. Space the other buttonholes evenly in between.

burda style magazine patterns do not have seam allowance included.

Seam and hem allowance to be added:
Seams, edges and hem 1.5 cm (5/8 in).



Cut from a double layer of fabric, right side facing in. Note direction of nap.

Cutting Out

- 1 front 2x
- 2 front yoke 2x
- 3 front band 2x
- 4 back 2x
- 5 back yoke, on a fold 1x
- 6 sleeve 2x
- 7 collar, on a fold 2x
- 8 collar stand, on a fold 2x
- 9 pocket, on a fold 2x

Draft the following pieces NOT included in the pattern:

- a) 2 cuffs, 24.5 – 25 – 25.5 – 26 – 26.5 cm (9 3/4 – 9 7/8 – 10 – 10 1/4 – 10 1/2 ins) long, 14 cm (5 1/2 ins) wide, finished width 7 cm (2 3/4 ins),
- b) 2 bias strips for sleeve vents, 19 cm (7 1/2 ins) long, 4 cm (1 5/8 ins) wide (incl. allowances).

Interfacing: See shaded area on pattern layout. Iron Vilene Bias Tape/stay tape to wrong side of shoulder seam edges on back yoke and to wrong side of armhole edges.

Sewing

Stitch front darts. Trim dart allowances to 7 mm (1/4 in) wide, neaten edges, and press allowances toward centre. Topstitch close to dart seams.

Stitch centre back seam. Topstitch right back close to seam and 7 mm (1/4 in) from seam.

Stitch back yoke to upper edge of back, clipping seam allowance of back into corner. Stitch front yokes to fronts. Press seam allowances onto yokes. Topstitch yokes along seams.

Stitch side seams and shoulder seams. Trim seam allowances, neaten edges together, and press allowances onto back.

Press hem allowance to inside, turn edge under, and stitch.

Stitch front bands to vertical edges of fronts. Press allowances of band attachment seams and of other long band edges onto bands. Fold bands on fold line, right side facing in. Stitch across bottom end. Turn bands right side out and baste inside edges in place. Topstitch bands close to attachment seam and front edge.

Collar with collar stand: Stitch collar pieces right sides together along outer edges. Trim seam allowances. Turn collar right side out and press. Topstitch collar edges. Lay collar stand pieces right sides together, catching collar in between. Stitch along front and upper collar stand edges, beginning and ending on front, exactly at seam line of attachment edge. Trim seam allowances. Turn collar stand right side out. Stitch outer collar stand piece to neck edge of shirt. Press seam allowances onto collar stand. Turn in inside collar stand piece and baste over attachment seam. Topstitch collar stand close to all edges.

Fold each pocket piece on marked fold line, right side facing in. Stitch side and lower edges together, leaving a section of seam open, for turning. Turn pockets right side out. Sew openings closed. Stitch pockets to fronts at marked placement lines, stitching 7 mm (1/4 in) from pocket edges.



Slash sleeve vents as marked. Spread cut edges open to a straight line and stitch to one long edge of binding strip, as narrowly as possible. Press binding strip over attachment seam into vent, then fold to a width of 1 cm (3/8 in), turn edge under, and sew to attachment seam. On inside at top of vent, stitch diagonally across binding. On front vent edges, turn binding to inside and baste to lower edge.

Stitch sleeve seams. Fold pleats in lower sleeve edges and baste.

Stitch cuffs to lower sleeve edges. Press seam allowances of attachment seam and of other long cuff edge onto cuffs. Fold cuffs lengthwise, right side facing in, and stitch across ends. Turn cuffs right side out. Baste inside edges in place. Topstitch cuffs close to attachment seam and outer edges, then topstitch again 7 mm (1/4 in) from seam and edges.

Set in sleeves, easing sleeve caps.

Work buttonholes in right front band and in right end of collar stand. Work two buttonholes in end of each cuff – 2 cm and 5 cm (3/4 in and 2 ins) below attachment seam.