

105 Skirt

Sizes 34, 36, 38, 40, 42

Skirt length 92 cm (36 1/4 ins)

Upper skirt edge is 4 cm (1 5/8 ins) below waist

Materials

Twill weave wool,
width: 150 cm (59 ins)
length: 1.70 – 1.70 – 1.70 – 1.95 – 1.95 m
(1 7/8 – 1 7/8 – 1 7/8 – 2 1/4 – 2 1/4 yds).

A piece of nappa leather or imitation leather,
approx. 25 x 55 cm (10 x 22 ins).

A piece of lining, approx. 35 x 40 cm (14 x 16 ins),
for the pocket pieces.

Elastic, 3.5 cm (1 1/2 ins) wide and 0.70 – 0.75 –
0.80 – 0.85 – 0.85 m (7/8 – 7/8 – 7/8 – 1 – 1 yd) long.

2 eyelets with washers, inside Ø 11 mm (a generous
3/8 in).

Glue stick (Pritt, Tesa).

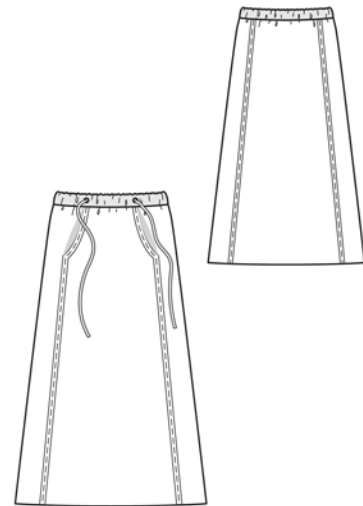
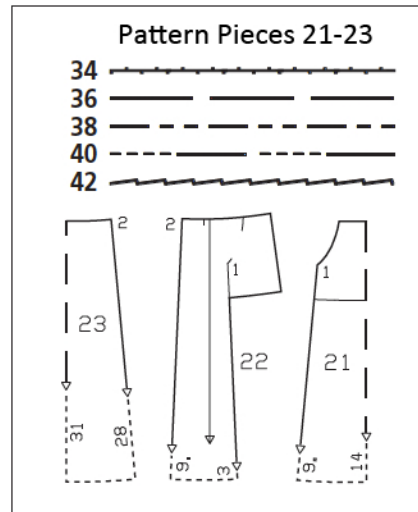
Recommended fabrics: Skirt fabrics of wools or
blends. Soft leather or imitation leather for the
waistband.

Preparations

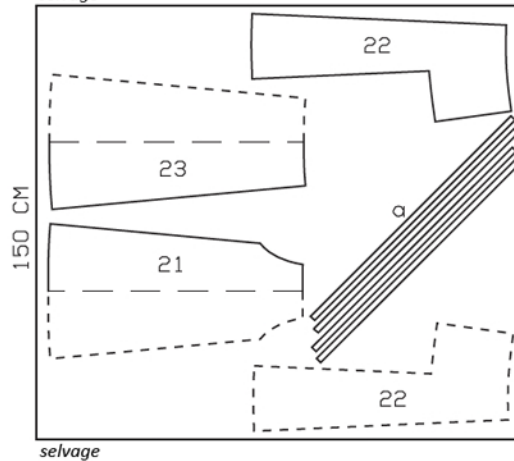
Print the pattern out on letter or A4 sized paper.
It is **very important** to not scale or fit any of the
pages, you must print the document in
actual size. Your pattern will print on multiple
pages, which you will then tile together. Arrange
the sheets on a large, hard and flat surface
matching up the numbers and letters (i.e. 6A to
6A). Cut or fold one of the sides and match the
edge to it's corresponding side. Then, tape down
in place so paper is secure.

Trace the pattern pieces from the pattern sheet
following the lines and markings for the correct
size and the correct style (105). This pattern also
includes pattern pieces, lines and markings for
style 104 that should be ignored.

Trace the pocket piece from piece 21 as a sepa-
rate pattern piece.

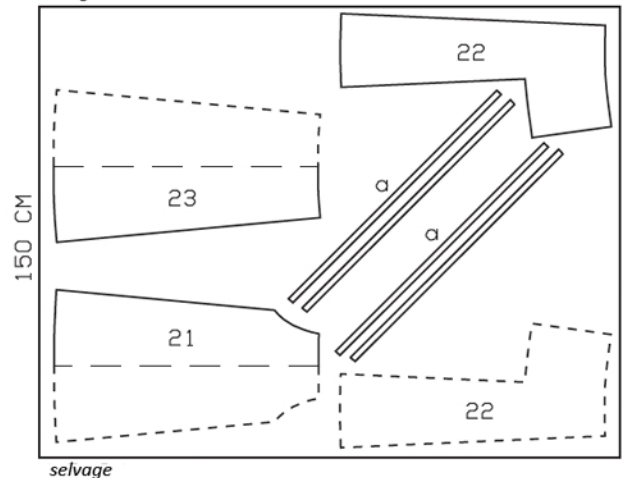


Sizes 34-38
selvage



Cut from a single layer of
fabric, right side facing up.
Cut right and left pieces as
opposites.

Sizes 40, 42
selvage



burda style magazine patterns do not have seam allowance included.

Seam and hem allowance to be added:
Seams and edges 1.5 cm (5/8 in), hem 4 cm (1 5/8 ins).

Cutting Out

Twill weave wool:

21 front skirt panel, on a fold 1x

22 side skirt panel with
integrated pocket piece 2x

23 back skirt panel, on a fold 1x

Draft the following pattern pieces NOT included in the pattern:

a) 4 fringe strips, cut on bias, 98 cm (38 3/4 ins) long, 2 cm (3/4 in) wide, cut without allowance.

Note: After cutting the fringe strips, wash them in warm, soapy water to felt them. After they have been stitched in place, brush the edges, to fray them slightly.

Leather:

2 waistband pieces, 43 – 45 – 47 – 49 – 51 cm (17 – 17 3/4 – 18 1/2 – 19 1/4 – 20 1/4 ins) long, 8 cm (3 1/4 ins) wide, finished width 4 cm (1 5/8 ins),

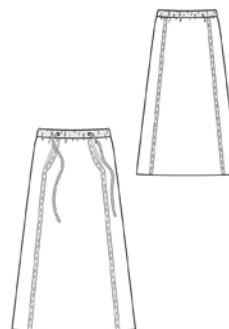
drawstring, a total of 165 – 170 – 175 – 180 – 185 cm (65 – 67 – 69 – 71 – 72 3/4 ins) long, 2 cm (3/4 in) wide (incl. allowances).

Lining: pocket piece (piece 21).

Sewing

For hip yoke pockets and front section seams, see style 104. Before basting upper pocket piece edges in place, pin one fringe strip to each pocket opening edge, from upper edge to section seam, and stitch along centre of strip. Stitch remaining strips over front section seams.

Stitch back skirt panel to side skirt panels. Press seam allowances open. Stitch fringe strips over seams.



Stitch side seams of waistband. Leave inside half of one waistband seam open, to insert elastic. Press seam allowances open. Stitch waistband to upper skirt edge. Press seam allowances of attachment seam onto waistband. Fold waistband in half, wrong side facing in, and press fold lightly. Unfold waistband. Insert two eyelets in outer half of waistband, 9 cm (3 1/2 ins) to each side of centre front and 2 cm (3/4 in) from fold edge. Fold waistband in half again. Fold drawstring in half, wrong side facing in. Glue edges together (glue stick) then edgestitch together. Pull drawstring into waistband, running ends out through eyelets. Topstitch waistband close to attachment seam. Pull elastic into waistband. Sew ends of elastic together to a circumference of 66 – 70 – 74 – 78 – 82 cm (26 – 27 3/4 – 29 1/4 – 30 3/4 – 32 1/2 ins).

Press hem allowance to inside and sew in place by hand.