

103 Coat

Sizes 36, 38, 40, 42, 44

Back length approx. 105 cm (41 1/2 ins)

Materials

Fine fulled knit fabric, with horizontal print (pattern repeat 63 cm / 24 3/4 ins), width: 140 cm (55 ins)
length: 3.30 – 3.60 – 3.60 – 3.60 – 3.60 m (3 5/8 – 4 – 4 – 4 – 4 yds).

Vilene Bias Tape/stay tape.

Recommended fabrics: Lightweight, softly draping coat fabrics of wool or blends. Use only fabrics with two “good” sides.

Preparations

Print the pattern out on letter or A4 sized paper. It is very important to not scale or fit any of the pages, you must print the document in actual size. Your pattern will print on multiple pages, which you will then tile together. Arrange the sheets on a large, hard and flat surface matching up the numbers and letters (i.e. 6A to 6A). Cut or fold one of the sides and match the edge to it's corresponding side. Then, tape down in place so paper is secure.

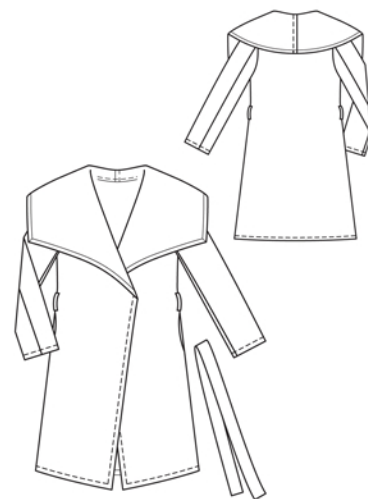
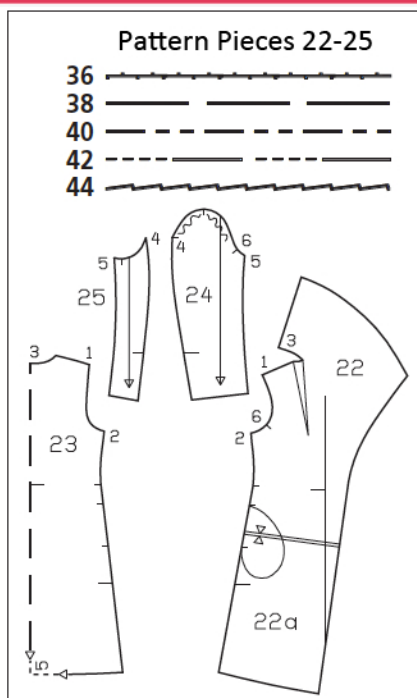
Trace the pattern pieces from the pattern sheet following the lines and markings for the correct size and the correct style (103). This pattern also includes pattern pieces, lines and markings for style 101 & 102 that should be ignored.

Trace the pocket piece from piece 22 as a separate pattern piece – it is the same for all sizes.

burda style magazine patterns do not have seam allowance included.

Seam and hem allowance to be added:

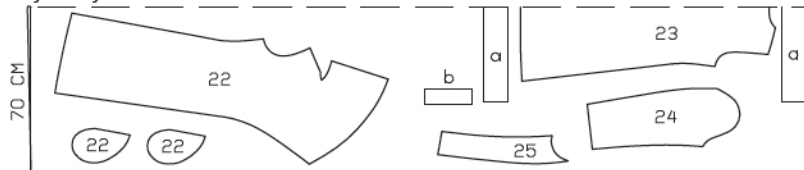
Seams 1.5 cm (5/8 in), edges and hem 3 cm (1 1/4 ins).



Right side faces in on a double layer of fabric. Right side faces up on a single layer of fabric. Cut right and left pieces as opposites. Note pattern repeat.

Size 36

fabric fold



selvage

Sizes 38-44

fabric fold



selvage

Cutting Out

22 front with integrated collar	2x	pocket piece	4x
23 back, on a fold	1x	24 upper sleeve	2x
25 under sleeve	2x		

Draft the following pieces NOT included in the pattern:

a) tie belt, a total of 155 – 160 – 165 – 170 – 170 cm (61 – 63 – 65 – 67 – 67 ins) long, 10 cm (4 ins) wide, finished width 5 cm (2 ins),

b) 2 belt carriers, a total of 20 cm (8 ins) long, 6 cm (2 3/8 ins) wide (incl. allowances).

Interfacing: Iron Vilene Bias Tape/stay tape to wrong side of neck and armhole edges and to wrong side of front shoulder seam edges. Iron Vilene Bias Tape/stay tape to wrong side of pocket opening edges of in-seam pockets.

Sewing

On each front, cut along centre of dart, between marked lines, up to approx. 15 cm (6 ins) before point. Stitch shoulder seams (seam number 1). Press seam allowances open.

Stitch centre back seam on integrated collar pieces. Press seam allowances to one side. Trim seam allowance which lies below to 7 mm (1/4 in) wide. Turn under edge of seam allowance which lies on top and baste. Work from right side of garment to topstitch 1 cm (3/8 in) from seam. Beginning at centre back, stitch collar to neck edge then continue seam to stitch dart. Press seam allowances of collar attachment seam onto back and stitch. Press darts toward side.

Stitch side seams, not stitching across pocket openings.

Inseam pockets: Pin pocket pieces to seam allowances of pocket opening edges, right sides facing, and stitch in place directly along marked seam lines. Press pocket pieces forward and stitch together.

On hem and collar edges, sew mitred corners, as follows: Press allowance to inside, turn edge under to 2 cm (3/4 in) wide, and press again. Mark corner point on pressed-under inside edge of both allowances. Turn allowances to outside and pin marked points together. Stitch corners diagonally – from marked point to corner. Trim allowances of mitring seams to 5 mm (3/16 in) and press open. Turn allowances to inside and baste. Topstitch 1.8 cm (a scant 3/4 in) from hem edge, front edges and collar edges.

Stitch sleeve seams. Press sleeve hem allowances to inside, turn raw edge under, and stitch 1.8 cm (a scant 3/4 in) from fold edge. Set in sleeves, easing sleeve caps.

Fold belt carrier strip lengthwise, right side facing in. Stitch 1.5 cm (5/8 in) from fold edge. Turn right side out. Cut into 2 pieces. Turn ends of belt carriers under for a finished length of 7 cm (2 3/4 ins). Sew belt carriers over side seams, at waist level.



Fold tie belt lengthwise, right side facing in. Stitch edges together, leaving a section open, for turning. Turn belt right side out. Sew opening closed.