

### 107 Skirt

Sizes 36, 38, 40, 42, 44

Skirt length from waist 71 cm (28 ins)

Waistband attachment seam = waist

### Materials

Viscose/rayon challis, with horizontal print, width: 140 cm (55 ins)  
length: 2.50 – 2.50 – 2.50 – 3.20 – 3.20 m  
(2 3/4 – 2 3/4 – 2 3/4 – 3 1/2 – 3 1/2 yds).

Interfacing.

1 invisible zip, 22 cm (9 ins) long.

1 button.

Note: If you use fabric with a width of 140 cm (55 ins), you need to cut the front overskirt panel for sizes 42 and 44 with a seam in centre front (see seam on paper pattern piece and pattern layout). This seam is not necessary if your fabric is 150 cm (59 ins) wide. In this case, you will need only 2.50 m (2 3/4 yds) for all sizes.

Recommended fabrics: Softly draping skirt fabrics.

### Preparations

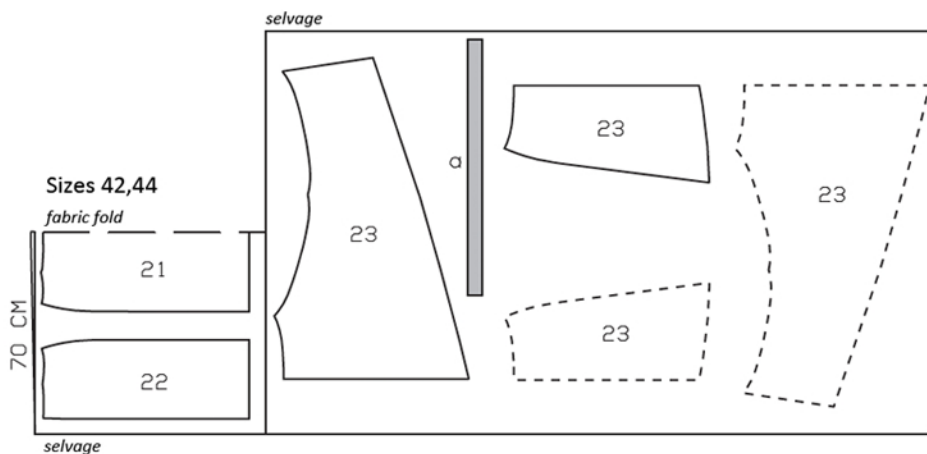
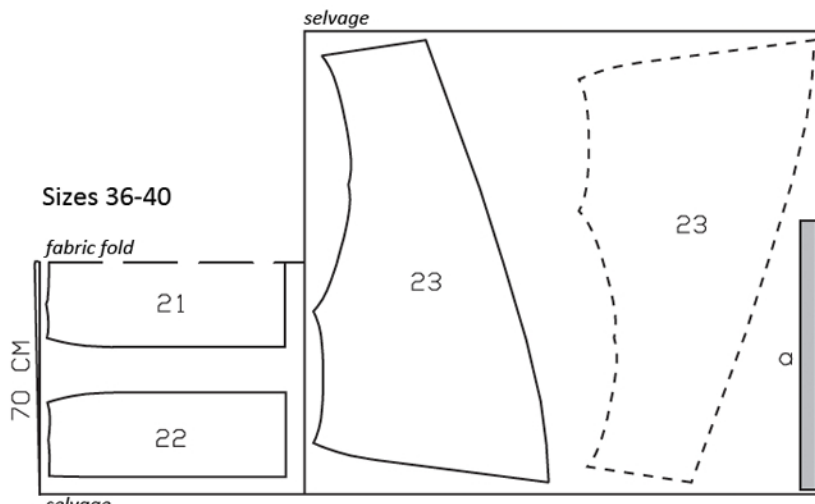
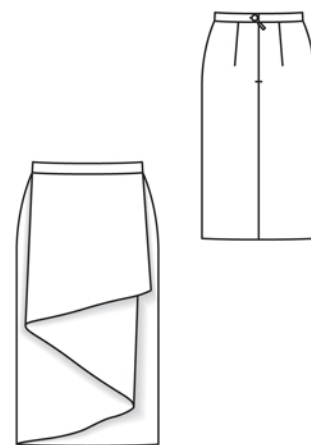
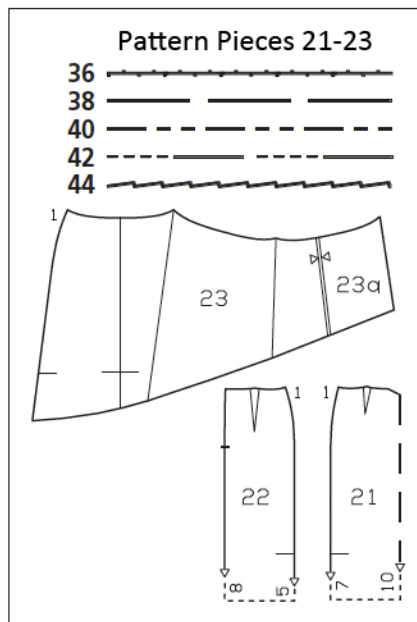
Print the pattern out on letter or A4 sized paper. It is **very important** to not scale or fit any of the pages, you must print the document in **actual size**. Your pattern will print on multiple pages, which you will then tile together. Arrange the sheets on a large, hard and flat surface matching up the numbers and letters (i.e. 6A to 6A). Cut or fold one of the sides and match the edge to it's corresponding side. Then, tape down in place so paper is secure.

Trace the pattern pieces from the pattern sheet following the lines and markings for your size. Sizes 42 and 44: Cut piece 23 apart on the marked seam line.

**burda style magazine patterns do not have seam allowance included.**

Seam and hem allowance to be added:

Seams and edges 1.5 cm (5/8 in), hem 4 cm (1 5/8 ins) (pieces 21 and 22).



Fold the fabric as shown in the pattern layout. Right side faces in on a double layer of fabric; right side faces up on a single layer. Pieces shown with a broken outline are placed on the fabric with their printed side facing down. Note pattern repeat.

## Cutting Out

- 21 front skirt panel, on a fold 1x
- 22 back skirt panel 2x
- 23 front overskirt panel 2x  
for sizes 42, 44 with centre seam

Draft the following piece NOT included in the pattern:

- a) waistband with 3 cm (1 1/4 in) underlap, 73 – 77 – 81 – 85 – 89 cm (28 3/4 – 30 1/2 – 32 – 33 1/2 – 35 ins) long, 5 cm (2 ins) wide, finished width 2.5 cm (1 in).

Interfacing: See shaded area on pattern layout.

## Sewing

Stitch front and back darts. Press darts toward centre.

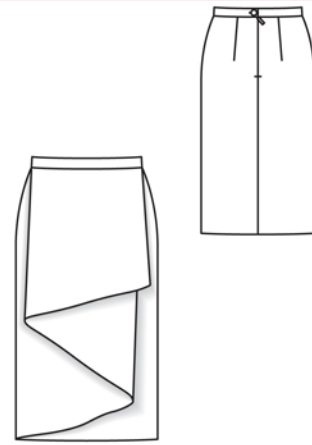
Sew invisible zip to back skirt pieces, see the “Helpful Hint” on next page. Stitch centre back seam from lower edge to zip. Press seam allowances open.

Stitch left side seam.

Sizes 42 and 44: Stitch centre seam on front overskirt panels.

Hand baste along outer and inner fold lines on front overskirt panels to make these lines visible on right fabric side. Lay overskirt panels right sides together. Stitch along shorter vertical edge and lower edge. Trim seam allowances, trimming corners diagonally. Turn overskirt right side out and press edges. Baste open edges together. Lay overskirt on skirt front so that centre fronts lie one on the other. Baste overskirt to right side seam edge – hem allowance of skirt extends. Pin overskirt to upper skirt edge. At left side seam, fold extending overskirt on marked inside fold line and lay edge to outside, over right side seam. At right side seam, fold overskirt on outer fold line, toward left side seam. Baste overskirt to upper skirt edge.

Stitch right side seam.





These special zippers come in various lengths. The zipper should be at least 2 cm (3/4 in) longer than the slit. It is sewn in place before the seam below the slit is stitched. A special presser foot is required to sew the zipper in place.

### **Sewing the zipper in place:**

Open the zipper and push the coil back with your thumbnail to reveal the seam marking between the tape and the coil. Place the open zipper right side down on the right fabric side of one slit edge.

In order to stitch the zipper in place exactly along the marked seam line, you must first calculate the distance between the tape edge and the fabric edge as follows: width of seam allowance minus 1 cm (3/8 in) tape width = distance from edge of fabric. This will yield a value of 5 mm (3/16 in) if the width of the seam allowance is 1.5 cm (5/8 in).

Pin the top end of the zipper tape in place, the calculated distance from the edge of the fabric. The bottom end of the zipper will extend past the marked end of the slit. Place the presser foot on the zipper so that the coil is in the notch to the right of the needle (1). Stitch zipper in place, from the top to the marked end of the slit. Close zipper.

Place the other zipper tape face down on the opposite slit edge and pin in place at the top. Open zipper again. Place the presser foot on the top end of the zipper so that the coil is in the notch to the left of the needle (2). Sew the zipper in place, from the top to the end of the slit. Close zipper.

Now stitch the seam below the zipper, from bottom to top. Turn the loose lower end of the zipper out of the way, over the seam allowance. Stitch as close as possible to the last stitches of the zipper seams. Trim away excess zipper and bind the end with a scrap of fabric.