

148 Blouse

Height 134, 140, 146, 152, 158 cm

Back length 44 – 46 – 48 – 50 – 52 cm

Materials

Batiste,
width: 150 cm (59 in)
length: 1.05 – 1.10 – 1.10 – 1.15 – 1.20 m
(1 1/4 – 1 1/4 – 1 1/4 – 1 3/8 – 1 3/8 yds).

Interfacing.

10 buttons.

Recommended fabrics: Blouse fabrics.

Preparations

Print the pattern out on letter or A4 sized paper. It is **very important** to not scale or fit any of the pages, you must print the document in **actual size**. Your pattern will print on multiple pages, which you will then tile together. Arrange the sheets on a large, hard and flat surface matching up the numbers and letters (i.e. 6A to 6A). Cut or fold one of the sides and match the edge to it's corresponding side. Then, tape down in place so paper is secure.

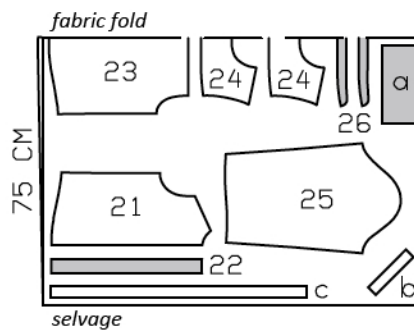
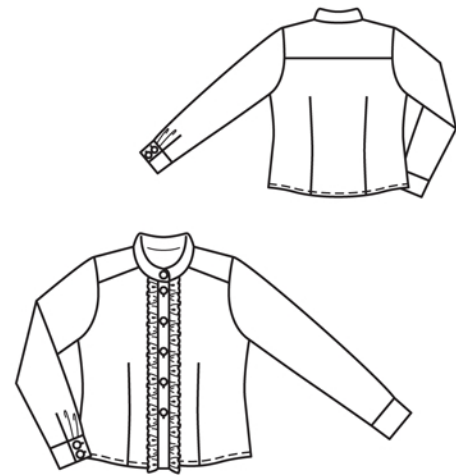
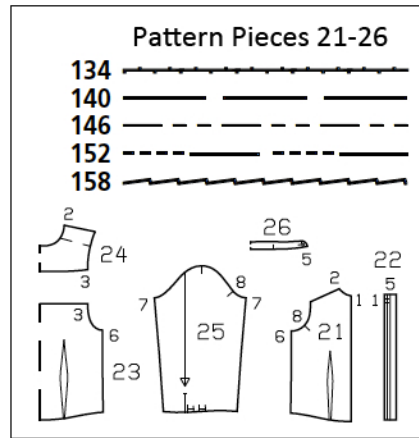
Trace the pattern pieces from the pattern sheet following the lines and markings for the correct size and the correct style (148). This pattern also includes pattern pieces, lines and markings for style 147AB that should be ignored.

The buttonhole on piece 22 is the same for all sizes. Mark the bottom buttonhole 13 cm (5 1/4 ins) above hem line. Mark the remaining 3 buttonholes evenly in between.

burda style magazine patterns do not have seam allowance included.

Seam and hem allowance to be added:

Seams and edges 1.5 cm (5/8 in), hem 2 cm (3/4 in).



Cut from a double layer of fabric, right side facing in.

Cutting Out

- 21 front 2x
- 22 front band 2x
- 23 back, on a fold 1x
- 24 yoke, on a fold 2x
- 25 sleeve 2x
- 26 standing collar, on a fold 2x

Draft the following pieces NOT included in the pattern:

- a) 2 cuffs, with 2 cm (3/4 in) underlap, 21.5 – 22 – 22 – 22.5 – 22.5 cm (8 1/2 – 8 3/4 – 8 3/4 – 9 – 9 ins) long, 10 cm (4 ins) wide, finished width 5 cm (2 ins),
- b) 2 bias binding strips for sleeve vents, 15 cm (6 ins) long, 3 cm (1 1/4 ins) wide (incl. allowance),
- c) 2 frills, 66 – 69 – 72 – 76 – 79 cm (26 – 27 1/4 – 28 1/2 – 30 – 31 1/4 ins) long, 1.5 cm (5/8 in) wide.

Interfacing: See pattern layout.

Sewing

Stitch vertical darts and press toward centre.

Yoke: Pin outer back yoke to upper edge of back piece, right sides together. Pin inner back yoke to upper edge of back piece, with right side facing wrong side (right sides of yoke pieces are facing). Stitch yokes to back together. Press yokes up. Stitch outer yoke to upper edges of fronts. Press seam allowances onto yoke. Turn in edges of inner yoke and baste to joining seams. Topstitch yoke close to joining seams.

Stitch side seams. Fold hem allowance to inside, turn in and stitch 1 cm (3/8 in) from lower edge.

Neaten one long edge and bottom end of each frill with closely spaced zigzag stitching: Press allowance to wrong side. Work from right side to stitch along fold edge with closely spaced zigzag stitch. Trim allowance close to zigzag stitching.

Gather opposite long edge to length of band. Baste frills to vertical edges of fronts, with wrong side facing right side. Baste top ends of frills to neck edge.

Stitch front bands to vertical edges of fronts. Press seam allowances of band joining seams and of other long edges of bands onto bands. Fold each band on fold line, right side facing in. Stitch across bottom end. Turn bands right side out. Baste inside edges in place. Topstitch bands close to joining seams.

Lay collar pieces right sides together. Stitch along front and upper edges, beginning and ending stitching in front, exactly on seam line of joining edge. Trim seam allowances. Turn collar right side out and press. Stitch outer collar piece to neck edge of blouse. Turn in inside collar piece and baste to joining seam. Topstitch collar close to all edges.

Slash sleeve vents as marked. Spread cut edges apart to a straight line and stitch to one lengthwise edge the binding strip, as narrowly as possible. Press binding strip over joining seam into vent, turn under to a width of 7 mm (1/4 in),



turn in, and sew to joining seam. Mitre binding at top of vent, on inside. Lay binding to inside on front edges of vents and baste to lower sleeve edges.

Stitch sleeve seams. Fold pleats in lower edges of sleeves in arrow direction and baste. Stitch cuffs to lower edges of sleeves, leaving underlap extending at back vent edges. Press seam allowances of joining seams and of other long edges of cuffs onto cuffs. Fold each cuff lengthwise, right side facing in. Stitch across ends. Turn right side out. Baste inside edges in place and baste upper edges of underlap together. Topstitch cuffs close to joining seams and close to upper edges of underlaps.

Set in sleeves.

Work buttonholes in right front band and right end of collar. Work 2 buttonholes in front end of each cuff.