

### 147B Shirt

Height 134, 140, 146, 152, 158 cm

Back length 65 – 68 – 71 – 74 – 77 cm

### Materials

Checked cotton,

width: 150 cm (59 in)

length: 1.70 – 1.75 – 1.80 – 1.90 – 2.00 m

(1 7/8 – 1 7/8 – 1 7/8 – 2 1/8 – 2 1/4 yds).

Interfacing.

13 buttons.

Recommended fabrics: Cotton fabrics.

### Preparations

Print the pattern out on letter or A4 sized paper. It is **very** important to not scale or fit any of the pages, you must print the document in actual size. Your pattern will print on multiple pages, which you will then tile together. Arrange the sheets on a large, hard and flat surface matching up the numbers and letters (i.e. 6A to 6A). Cut or fold one of the sides and match the edge to it's corresponding side. Then, tape down in place so paper is secure.

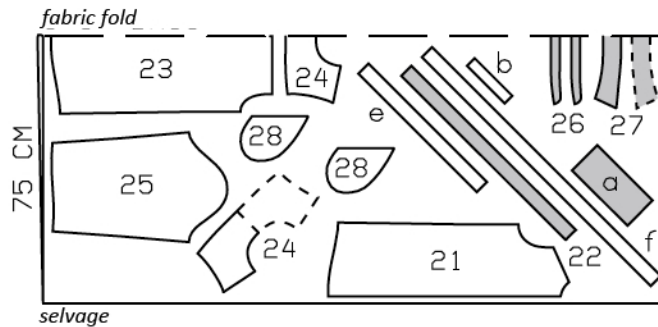
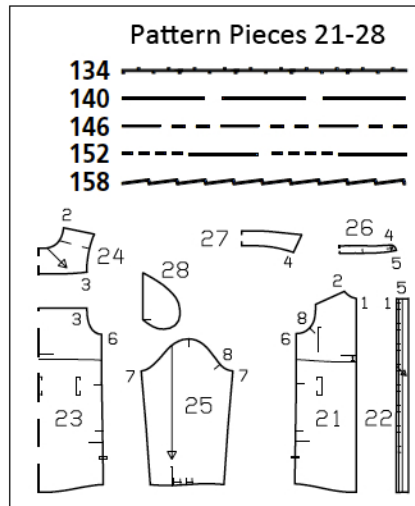
Trace the pattern pieces from the pattern sheet following the lines and markings for the correct size and the correct style (147B). This pattern also includes pattern pieces, lines and markings for style 147A & 148 that should be ignored.

The buttonholes on piece 22 are marked for size 134. For the other sizes, mark the bottom buttonhole the same distance from hem edge as for size 134. The top buttonhole is the same for all sizes. Mark the other buttonholes evenly in between.

burda style magazine patterns do not have seam allowance included.

Seam and hem allowance to be added:

Seams and edges 1.5 cm (5/8 in), hem 2 cm (3/4 in).



Cut from a double layer of fabric, right side facing in. Match checks.

### Cutting Out

- |                           |    |                           |    |
|---------------------------|----|---------------------------|----|
| 21 front                  | 2x | 25 sleeve                 | 2x |
| 22 front band             | 2x | 26 collar band, on a fold | 2x |
| 23 back, on a fold        | 1x | 27 collar, on a fold      | 2x |
| 24 outer yoke, on a fold, |    | 28 pocket piece           | 4x |
| and cut on bias           | 1x |                           |    |
| inner yoke, on a fold     |    |                           |    |
| and cut on straight grain | 1x |                           |    |

Draft the following pieces NOT included in the pattern:

- a) 2 cuffs, cut on bias, with 2 cm (3/4 in) underlap, 21.5 – 22 – 22 – 22.5 – 22.5 cm (8 1/2 – 8 3/4 – 8 3/4 – 9 – 9 ins) long, 10 cm (4 ins) wide, finished width 5 cm (2 ins),
- b) 2 bias binding strips for sleeve vents, 15 cm (6 ins) long, 3 cm (1 1/4 ins) wide (incl. allowance).
- e) facing strip, cut on bias (casing), 80 – 82 – 86 – 90 – 94 cm (31 1/2 – 32 1/2 – 34 – 35 1/2 – 37 ins) long, 4 cm (1 5/8 ins) wide (incl. allowance),
- f) drawstring band, cut on bias, a total of 160 – 165 – 170 – 175 – 180 cm (63 – 65 – 67 – 69 – 71 ins) long, 4 cm (1 5/8 ins) wide (incl. allowance).

Interfacing: See pattern layout.

## Sewing

**Yoke:** Pin outer back yoke to upper edge of back piece, right sides together. Pin inner back yoke to upper edge of back piece, with right side facing wrong side (right sides of yoke pieces are facing). Stitch yokes to back together. Press yokes up. Stitch outer yoke to upper edges of fronts. Press seam allowances onto yoke. Turn in edges of inner yoke and baste to joining seams. Topstitch yoke close to joining seams.

Stitch side seams, leaving pocket openings and hem slits open.

**In-seam pockets:** Pin pocket pieces right sides together with seam allowances of pocket opening edges and stitch in place, directly along marked seam lines. Press pocket pieces forward and stitch together.

Press hem and slit allowances to inside, turn raw edges under, and stitch 1 cm (3/8 in) from edges and stitching horizontally above slit.

**Drawstring casing:** Work small openings (buttonholes) for drawstring in both front pieces, first ironing pieces of interfacing to wrong side of fabric, for reinforcement. Press long edges of casing strip to wrong side, 8 mm (a good 1/4 in) wide. Baste facing strip to inside of front and back pieces, over marked casing lines. Stitch from right side of fabric, as marked. Turn in ends of drawstring band. Fold drawstring band lengthwise, right side facing in. Stitch 1 cm (3/8 in) from fold edge. Turn right side out and press. Sew ends of drawstring closed. Pull drawstring into casing.

Stitch front bands to vertical edges of fronts. Press seam allowances of band joining seams and of other long edges of bands onto bands. Fold each band on fold line, right side facing in. Stitch across bottom end. Turn bands right side out. Baste inside edges in place. Topstitch bands close to joining seams.

**Collar with collar band:** Stitch collar pieces right sides together along outer edges. Turn collar right side out, press, and topstitch close to edges. Lay collar band pieces right sides



together, catching collar in between. Stitch along front and upper edges of collar band, beginning and ending stitching in front exactly on seam line of joining edge. Turn collar band right side out. Stitch outer collar band piece to neck edge. Press seam allowances onto collar band. Turn in inside collar band piece and baste over joining seam. Topstitch 7 mm (1/4 in) from outer edges

Slash sleeve vents as marked. Spread cut edges apart to a straight line and stitch to one lengthwise edge the binding strip, as narrowly as possible. Press binding strip over joining seam into vent, turn under to a width of 7 mm (1/4 in), turn in, and sew to joining seam. Mitre binding at top of vent, on inside. Lay binding to inside on front edges of vents and baste to lower sleeve edges.

Stitch sleeve seams. Fold pleats in lower edges of sleeves in arrow direction and baste.

Stitch cuffs to lower edges of sleeves, leaving underlap extending at back vent edges. Press seam allowances of joining seams and of other long edges of cuffs onto cuffs. Fold each cuff lengthwise, right side facing in. Stitch across ends. Turn right side out. Baste inside edges in place and baste upper edges of underlap together. Topstitch cuffs close to joining seams and close to upper edges of underlaps.

Set in sleeves.

Work buttonholes in right front band and right end of collar band. Work 2 buttonholes in front end of each cuff.