

145 Parka for Children

Height 134, 140, 146, 152, 158 cm

Back length 59 – 62 – 65 – 68 – 71 cm

Materials

Cotton gabardine,

width: 150 cm (59 in)

length: 1.70 – 1.70 – 1.80 – 1.85 – 1.90 m

(1 7/8 – 1 7/8 – 2 – 2 1/8 – 2 1/8 yds).

Teddy plush fabric, for lining

width: 150 cm (59 in)

length: 0.75 – 0.80 – 0.80 – 0.85 – 0.85 m

(7/8 – 7/8 – 7/8 – 1 – 1 yd).

Quilted lining, for sleeves

width: 140 cm (55 in)

length: 0.55 – 0.55 – 0.55 – 0.60 – 0.60 m (3/4 yd).

Batiste, for hood lining

width: 150 cm (59 in)

length: 0.45 m (1/2 yd) for all sizes.

10 cm (4 in) wide fake fur trim: 0.60 m (3/4 yd) long.

Band for drawstring, 8 mm (1/4 in) wide and 1.50 m (1 3/4 yds) long.

Interfacing.

1 separating two-way zip, 60 – 60 – 65 – 65 – 70 cm (24 – 24 – 26 – 26 – 28 ins) long. 1 separating two-way zip, 35 cm (14 ins) long.

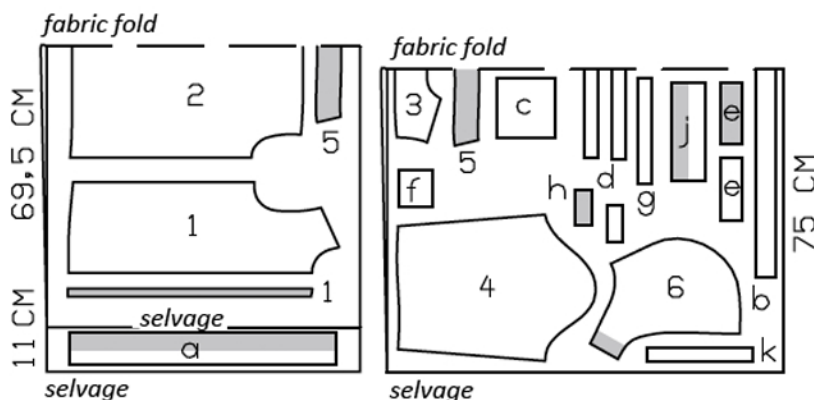
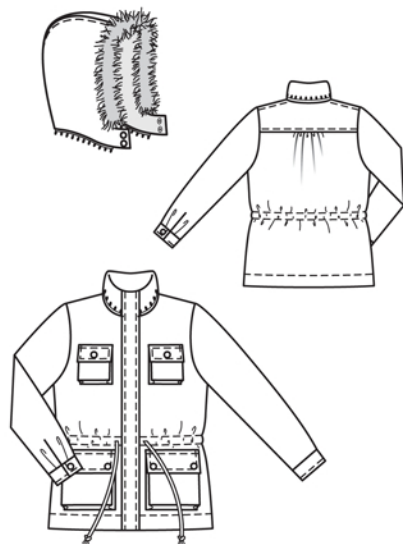
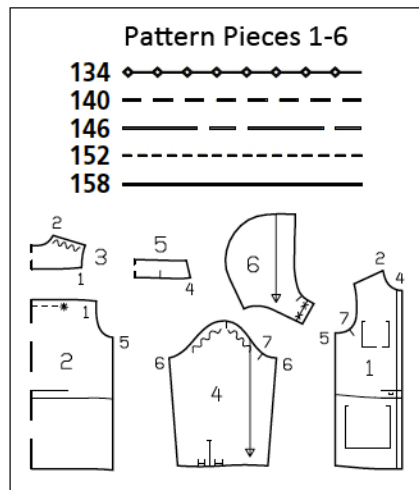
10 hammer-on snap fasteners.

Recommended fabrics: Cotton fabrics with some body. Lightweight teddy plush for lining. Quilted lining for the sleeves.

Preparations

Print the pattern out on letter or A4 sized paper. It is **very important** to not scale or fit any of the pages, you must print the document in **actual size**. Your pattern will print on multiple pages, which you will then tile together. Arrange the sheets on a large, hard and flat surface matching up the numbers and letters (i.e. 6A to 6A). Cut or fold one of the sides and match the edge to it's corresponding side. Then, tape down in place so paper is secure.

Copyright 2012 by Verlag GmbH & Co. KG Aenne Burda, Hubert Burda-Platz 2, D-77652 Offenburg. All models, pattern pieces and drawings are copyrighted, commercial use is prohibited. The publisher shall not be liable for damages caused by improper handling of the cut material, improper execution of the tips and instructions, or improper use of the models are emerging.



Cut from a double layer of fabric, right side facing in. Leave one edge of the fabric (selvage) extending 11 cm (43/8 ins) wide, for fastening band

Trace the pattern pieces from the pattern sheet following the lines and markings for the correct size and the correct style (145). This pattern also includes pattern pieces, lines and markings for style 146 that should be ignored.

Trace facing from piece 1 as a separate pattern piece. The snap fasteners marked on piece 6 are for size 134. For the remaining sizes, mark the top snap the same distance from neck edge as for size 134.

burda style magazine patterns do not have seam allowance included.

Seam and hem allowance to be added:
Seams and edges 1.5 cm (5/8 in), hem 5 cm (2 ins), lining 1.5 cm (5/8 in).

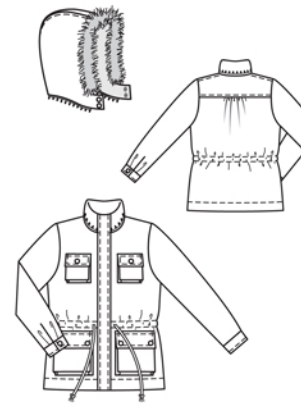
Cutting Out

Cotton gabardine:

- 1 front 2x
- facing 2x
- 2 back, on a fold 1x
- 3 back yoke, on a fold 1x
- 4 sleeve 2x
- 5 standing collar, on a fold 2x
- 6 hood 2x

Draft the following pieces NOT included in the pattern:

- a) fastening band, 61 – 64 – 66.5 – 69.5 – 72.5 cm (24 – 25 1/4 – 26 1/4 – 27 1/2 – 28 5/8 ins) long, 8 cm (3 1/4 ins) wide, finished width 4 cm (1 5/8 ins),
- b) facing strip for drawstring casing, 97 – 99 – 103 – 107 – 111 cm (38 1/4 – 39 – 40 3/4 – 42 1/4 – 43 3/4 ins) long, 5 cm (2 ins) wide (incl. allowance),
- c) 2 lower pockets, 16.5 – 17 – 17.5 – 18 – 18.5 cm (6 1/2 – 6 3/4 – 6 7/8 – 7 – 7 1/8 – 7 1/4 ins) long, including 3 cm (1 1/4 ins) facing at upper edge, 14 – 14.5 – 15 – 15.5 – 16 cm (5 1/2 – 5 3/4 – 6 – 6 1/4 – 6 3/8 ins) wide,
- d) 2 side fold pieces (lower pockets), 41 – 42.5 – 44 – 45.5 – 47 cm (16 1/4 – 16 3/4 – 17 1/4 – 18 – 18 1/2 ins) long, 3.5 cm (1 1/2 ins) wide,
- e) 4 flap pieces (lower pockets), 14.5 – 15 – 15.5 – 16 – 16.5 cm (5 3/4 – 6 – 6 1/4 – 6 3/8 – 6 1/2 ins) long, 5 – 5 – 5.5 – 5.5 – 6 cm (2 – 2 – 2 1/4 – 2 1/4 – 2 3/8 ins) wide,
- f) 2 upper pockets, 10.5 – 11 – 11.5 – 12 – 12.5 cm (4 1/4 – 4 3/8 – 4 1/2 – 4 3/4 – 5 ins) long, including 3 cm (1 1/4 ins) facing at upper edge, 8 – 8.5 – 9 – 9.5 – 10 cm (3 1/4 – 3 3/8 – 3 1/2 – 3 3/4 – 4 ins) wide,
- g) 2 side fold pieces (upper pockets), 23 – 24.5 – 26 – 27.5 – 29 cm (9 1/8 – 9 3/4 – 10 1/4 – 11 – 11 1/2 ins) long, 3.5 cm (1 1/2 ins) wide,
- h) 4 flap pieces (upper pockets), 8.5 – 9 – 9.5 – 10 – 10.5 cm (3 3/8 – 3 1/2 – 3 3/4 – 4 – 4 1/4 ins) long, 3.5 – 3.5 – 4 – 4 – 4.5 cm (1 1/2 – 1 1/2 – 1 5/8 – 1 5/8 – 1 7/8 ins) wide,



j) 2 cuffs, 25 – 25 – 25.5 – 25.5 – 26 cm (10 – 10 – 10 1/8 – 10 1/8 – 10 1/4 ins) long, 8 cm (3 1/4 ins) wide, finished width 4 cm (1 5/8 ins),

k) 2 binding strips for sleeve vents, 22 cm (8 3/4 ins) long, 4 cm (1 5/8 ins) wide (incl. allowance).

Teddy plush (lining): piece 1 minus width of facing, and also pieces 2 and 3.

Quilted lining: piece 4.

Batiste (lining): piece 6.

Interfacing: See pattern layout.

Sewing

Gather upper back between the asterisks. Stitch yoke to back. Topstitch yoke close to seam and 7 mm (1/4 in) from seam.

Stitch shoulder seams. Press seam allowances onto back. Topstitch shoulder seams. Stitch side seams. Press seam allowances open.

n Work buttonhole openings in fronts to insert drawstring band. Baste facing strip to inside of jacket, over marked casing lines. Stitch from right side as marked.

Bellows pockets: Turn self-facing on upper edge of each pocket to inside and stitch 2 cm (3/4 in) from fold. Lay allowances on ends of each side fold piece to inside and press. Press allowance on one long edge of each side fold piece to inside. Stitch opposite long edge of side fold piece right sides together with side and lower edges of pocket pieces, clipping allowance of side fold pieces at bottom corners of pockets. Turn side fold pieces to inside, press edges of pockets, and topstitch close to edges. Lay pressed inside edges of side fold pieces under outer edges of pockets and press. Lay pockets on fronts at abutting lines. Pin side fold pieces in place and edgestitch in place. At upper corners of pockets, stitch folds in place, about 2 cm (3/4 in) long.

Flaps: Stitch each interfaced flap piece to flap piece with no interfacing, right sides together, leaving joining edge open. Turn right side out. Topstitch edges. Stitch flaps in place, 1.5 cm (5/8 in) above pockets. Press flaps down and stitch again close to joining seams. Insert top halves of snap fasteners in

Sewing Continued...

corners of each flap. Insert bottom halves of snaps in pockets to match.

Fold shorter zip to half the length and mark the centre. Pin zip face down to neck edge of jacket so that zip teeth lie on jacket front and back, about 5 mm (3/16 in) from marked seam line and marking lies at centre back. Turn in ends of zip tape. Baste zip tape in place. Stitch outer collar piece to neck edge, catching zip.

Stitch sleeve seams. Set in sleeves, easing sleeve caps. Stitch front facings to front lining pieces. Trim away hem allowances of facing and lining. Stitch seams of lining. Stitch inside collar piece to neck edge of facing and lining. Set in sleeve linings. Separate the long zip. Turn in top ends of tapes. Pin halves of zip to front edges of front facings and inside collar piece, with wrong side of zip tapes facing right side of fabric, so that edge of each zip tape exactly meets marked seam line. Stitch along centre of each zip tape. Lay teeth forward and press allowances onto facing and collar.

Pin facings, inside collar and lining right sides together with jacket. Match zip teeth to seam line at front edges, allowances extend at front edges of jacket. Lay allowances on front collar edges outward and pin over inside collar piece. Stitch along upper edge of collar. Trim seam allowances. Turn collar right side out and press. Lay lining inside jacket, with wrong sides facing, pulling linings into sleeves. Press allowances on front edges of jacket to inside. Baste zip under edges so that zip teeth are covered. Topstitch 7 mm (1/4 in) from front edges. Pin collar joining seams together exactly. Work from inside to stitch seam allowances together, close to collar joining seam, beginning and ending about 5 cm (2 ins) behind front edges.

Baste facing and lining in place, above hem line. Lay hem allowance to inside, turn in and stitch 4 cm (1 5/8 ins) from lower edge. Sew front edges of hem allowance in place by hand.

Baste lining to lower edge of sleeves without turning in. Baste lining closely to both sides of slash line. Slash sleeve vents as marked. Spread cut edges apart to a straight line and stitch to one lengthwise edge the binding strip, as narrowly as possible. Press binding strip over joining seam into vent, turn under to a width of 7 mm (1/4 in), turn in, and sew to joining seam. Mitre binding at top of vent, on inside. Lay binding to inside on front edges of vents and baste to lower sleeve edges. Finished width of binding = 1 cm (3/8 in). Lay pleats in lower edges of sleeves in arrow direction and baste.

Stitch cuffs to lower edges of sleeves. Press seam allowances of joining seams and of other long edges of cuffs onto cuffs. Fold cuffs lengthwise, right side facing in, and stitch across ends. Turn right side out. Baste inside edges in place. Topstitch cuffs close to joining seam. Topstitch close to outer edges and again 7 mm (1/4 in) from outer edges. Fasten cuffs with one snap fastener each.

Fastening band: Fold band in half, right side facing in. Stitch across ends. Turn band right side out. Topstitch close to edges of band and again 7 mm (1/4 in) from edges. Stitch edges of band together to right front and collar, along joining line – band points to the side. Trim seam allowances of joining seam to 5 mm (3/16 in) wide. Press band forward over joining seam. Topstitch close to seam and again 7 mm (1/4 in) from seam.

Use a safety pin as a bodkin to pull band into casing.

Stitch centre seam of hood. Press seam allowances to one side. Topstitch close to seam and again 7 mm (1/4 in) from seam. Open separating zip at collar. Baste loose zip tape to hood (right sides facing, matching centres), so that teeth of zip lie on hood, 5 mm (3/16 in) past marked seam line. Stitch zip tape in place along marked seam line. Fold fake fur trim to half the width, right side facing out. Round off ends of trim slightly. Baste edges of trim together to edge of hood, between markings. Stitch centre seam of hood lining. Lay hood and lining together, right sides facing. Stitch edges together all around, leaving about 20 cm (8 ins) open on lower edge for turning. Trim seam allowances, trimming corners diagonally. Turn hood right side out and press. Sew opening on lower edge of hood closed. Topstitch hood close to all edges. Attach snap