

126B Skirt

Sizes 36, 38, 40, 42, 44
Skirt length 78 cm (30 3/4 ins)

Materials

Shot taffeta,
width: 150 cm (59 ins)
length: 1.75 m (2 yds) for all sizes.

Dotted tulle, for the overskit,
width: 150 cm (59 ins)
length: 1.75 m (2 yds).

Interfacing.

1 invisible zip, 22 cm (9 ins) long.

1 button.

Recommended fabrics: Lightweight skirt fabrics with some body. Soft tulle for the overskit.

Preparations

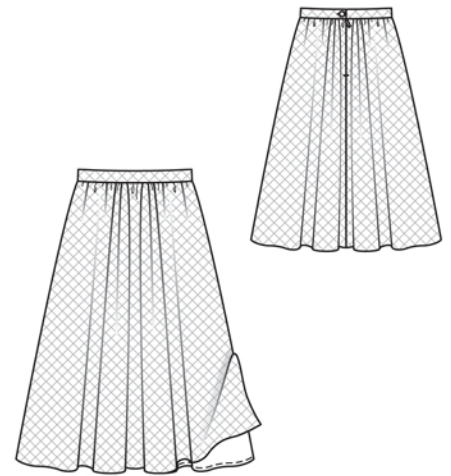
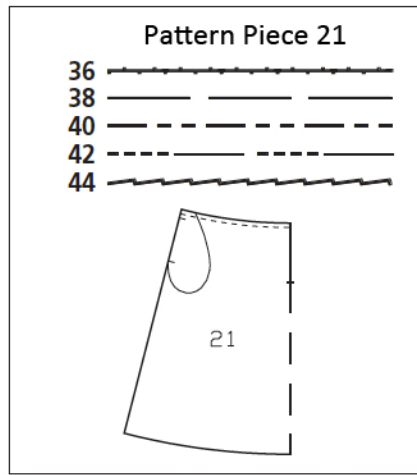
Print the pattern out on letter or A4 sized paper. It is **very important** to not scale or fit any of the pages, you must print the document in **actual size**. Your pattern will print on multiple pages, which you will then tile together. Arrange the sheets on a large, hard and flat surface matching up the numbers and letters (i.e. 6A to 6A). Cut or fold one of the sides and match the edge to it's corresponding side. Then, tape down in place so paper is secure.

Trace the pattern pieces from the pattern sheet following the lines and markings for the correct size and the correct style (126). This pattern also includes pattern pieces, lines and markings for style 127 that should be ignored.

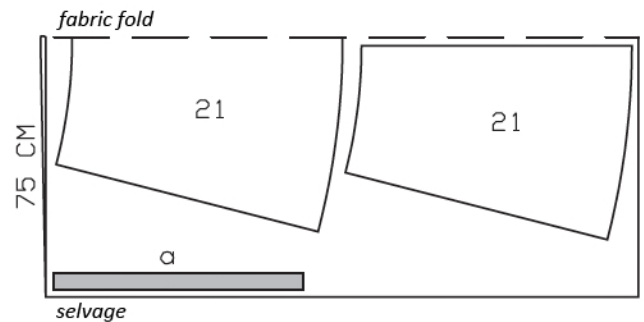
burda style magazine patterns do not have seam allowance included.

Seam and hem allowance to be added:

Seams and edges 1.5 cm (5/8 in). Hem 3 cm (1 1/4 ins). No allowances on lower edges of tulle skirt pieces.



Cut from a double layer of fabric, right side facing in.



Cutting Out

Taffeta/tulle:

21 front skirt panel, on a fold 1x
21 back skirt panel 2x

Draft the following pieces NOT included in the pattern:

a) waistband with 3 cm (1 1/4 in) underlap 72 – 76 – 80 – 84 – 88 cm (28 1/2 – 30 – 31 1/2 – 33 – 34 3/4 ins) long, 5 cm (2 ins) wide, finished width 2.5 cm (1 in).

Interfacing: Iron to taffeta waistband.

Sewing

Stitch side seams of skirt and overskirt. At each seam, trim allowances to 7 mm (1/4 in), neaten edges together, and press allowances toward back.

Lay overskirt on skirt, with wrong side facing right side. Baste upper edges together. Baste back edges together, from upper edge to marked end of slit.

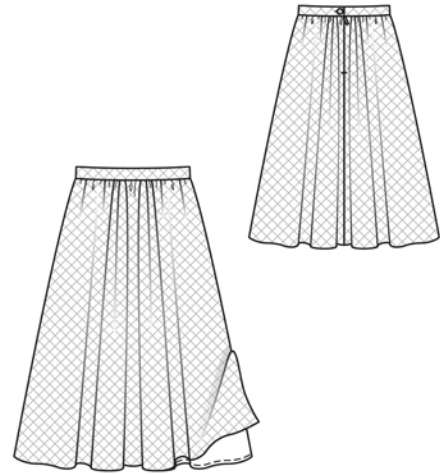
Sew invisible zip to back slit edges, see the "Helpful Hint" on next page. Clip seam allowances of tulle at end of slit. Stitch centre back seam on tulle and taffeta each separately, stitching from lower edge to zip.

Gather upper skirt edge to 69 – 73 – 77 – 81 – 85 cm (27 1/4 – 28 3/4 – 30 1/2 – 32 – 33 1/2 ins). Distribute the gathering so that skirt is gathered less at sides and more at the centre.

Baste tulle waistband to taffeta waistband, with wrong side facing right side, and treat as one layer of fabric from now on.

Stitch waistband to upper skirt edge, leaving underlap extending at right back slit edge. Press seam allowances of attachment seam and of other long edge onto waistband. Fold waistband lengthwise, right side facing in. Stitch across ends. Turn right side out. Sew inside waistband edge along attachment seam by hand and sew underlap edges together. Work buttonhole in left waistband end.

Press hem allowance of taffeta skirt to inside, turn edge under, and stitch.





These special zippers come in various lengths. The zipper should be at least 2 cm (3/4 in) longer than the slit. It is sewn in place before the seam below the slit is stitched. A special presser foot is required to sew the zipper in place.

Sewing the zipper in place:

Open the zipper and push the coil back with your thumbnail to reveal the seam marking between the tape and the coil. Place the open zipper right side down on the right fabric side of one slit edge.

In order to stitch the zipper in place exactly along the marked seam line, you must first calculate the distance between the tape edge and the fabric edge as follows: width of seam allowance minus 1 cm (3/8 in) tape width = distance from edge of fabric. This will yield a value of 5 mm (3/16 in) if the width of the seam allowance is 1.5 cm (5/8 in).

Pin the top end of the zipper tape in place, the calculated distance from the edge of the fabric. The bottom end of the zipper will extend past the marked end of the slit. Place the presser foot on the zipper so that the coil is in the notch to the right of the needle (1). Stitch zipper in place, from the top to the marked end of the slit. Close zipper.

Place the other zipper tape face down on the opposite slit edge and pin in place at the top. Open zipper again. Place the presser foot on the top end of the zipper so that the coil is in the notch to the left of the needle (2). Sew the zipper in place, from the top to the end of the slit. Close zipper.

Now stitch the seam below the zipper, from bottom to top. Turn the loose lower end of the zipper out of the way, over the seam allowance. Stitch as close as possible to the last stitches of the zipper seams. Trim away excess zipper and bind the end with a scrap of fabric.