

124 Jacket

Sizes 36, 38, 40, 42, 44

Back length approx. 57 cm (22 1/2 ins)

Materials

Bouclé,
width: 150 cm (59 ins)
length: 1.70 – 1.75 – 1.75 – 1.80 – 1.80 m
(1 7/8 – 2 – 2 – 2 – 2 yds).

Lining,
width: 140 cm (55 ins)
length: 1.00 – 1.00 – 1.05 – 1.05 – 1.05 m
(1 1/8 – 1 1/8 – 1 1/4 – 1 1/4 – 1 1/4 yds).

Interfacing.

1 fabric-covered button.

1 large sew-on snap fastener.

Shoulder pads.

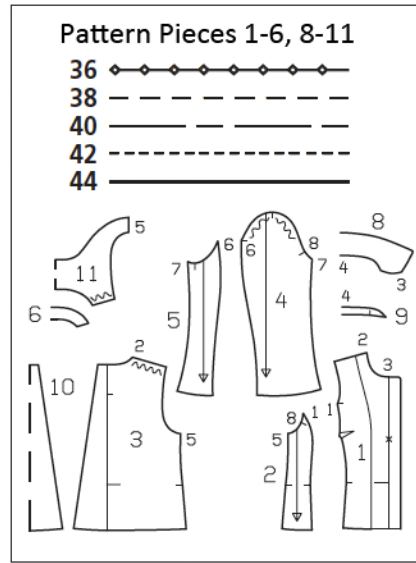
Recommended fabrics: Jacket fabrics of wools or blends.

Preparations

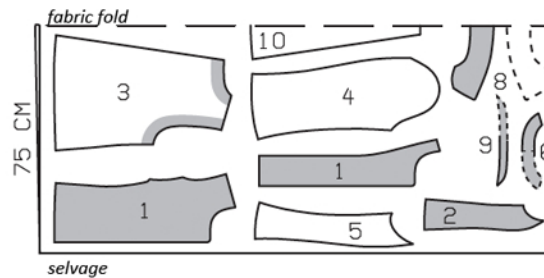
Print the pattern out on letter or A4 sized paper. It is very important to not scale or fit any of the pages, you must print the document in actual size. Your pattern will print on multiple pages, which you will then tile together. Arrange the sheets on a large, hard and flat surface matching up the numbers and letters (i.e. 6A to 6A). Cut or fold one of the sides and match the edge to it's corresponding side. Then, tape down in place so paper is secure.

Trace the pattern pieces from the pattern sheet following the lines and markings for the correct size and the correct style (124). This pattern also includes pattern pieces, lines and markings for style 123 & 125 that should be ignored.

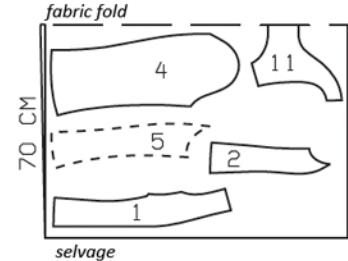
Trace the front facing from piece 1 as a separate pattern piece.



Bouclé, 150cm wide



Lining, 140cm wide



Cut from a double layer of fabric, right side facing in.

Cutting Out

Bouclé:

- 1 centre front 2x
- front facing 2x
- 2 side front 2x
- 3 back 2x
- 4 upper sleeve 2x
- 5 under sleeve 2x
- 6 back facing, on a fold 1x
- 8 collar, on a fold 2x
- 9 collar stand, on a fold 2x
- 10 pleat underlay, on a fold 1x

Lining:

- 11 back lining, on a fold 1x
- piece 1 minus width of facing and pieces 2, 4, and 5.

Interfacing: See shaded area on pattern layout. Also interface hem allowances.

burda style magazine patterns do not have seam allowance included.

Seam and hem allowance to be added:

Seams and edges 1.5 cm (5/8 in), hem 4 cm (1 5/8 ins) (including hem on pleat underlay), sleeve hems 4 cm (1 5/8 ins). Cut lining pieces with 1.5 cm (5/8 in) seam and hem allowances.

Sewing

Stitch bust darts. Press darts down. Stitch front section seams. Press seams open.

Stitch centre back seam from upper edge to seam mark. Baste pleat below seam mark. Press allowances of centre seam open above seam mark – do not press pleat folds below seam mark. Lay pleat underlay on inside, over pleat, and stitch long edges together, ending approx. 10 cm (4 ins) above hem line. Baste pleat to neck edge.

Stitch side seams, shoulder seams, and facing seams.

Pin facing right sides together with jacket. Stitch along front and upper edges, up to centre front (seam number 3). Leave facing lying right sides together with jacket for the time being.

Collar: Stitch collar band pieces to collar pieces. Trim allowances and press seams open. Top-stitch close to each side of seams. Stitch collar pieces right sides together along outer edges, beginning and ending stitching exactly at seam line on attachment edge. Turn collar right side out and press. Lay collar between jacket and facing. Stitch under collar to neck edge of jacket and stitch top collar to facing. Press seam open. Turn facing to inside. Pin collar attachment seams together exactly. Turn facing up again and stitch seam allowances together, close to collar attachment seam, as far as possible. Turn facing down.

At hem edge, turn facing forward again. Press hem allowance to inside, then turn down again.

Stitch sleeve seams. Press sleeve hem allowances to inside and sew in place by hand.

Set in sleeves, easing sleeve caps. Sew shoulder pads in place.

On lining back, narrowly hem lower edge. Stitch darts and seams of lining. Press side edges of fronts to inside, even with side seams. Set in sleeve linings.



Sew lining in jacket, hem jacket: Stitch lining right sides together with inside facing edge. Lay lining inside jacket, wrong sides together, pulling linings into sleeves. Turn hem allowance to inside and sew in place. Hem pleat underlay. On fronts, turn lining under along hem edge. Press fold edge lightly, push upward in a shallow curve, and pin to hem allowance. Sew facings and lining in place. Lay extra length of lining down and press lightly. At side seams, turn lining under and sew in place by hand. Above each sleeve hem, pin a fold, approx. 1 cm (3/8 in) deep, in lining. Turn sleeve lining under and sew to hem allowance. Lay extra length down and press

Remove basting at pleat. Stitch remaining inside pleat seams across finished hem. Turn lower ends of allowances under, at an angle, and sew together.

Cover upper snap halves with lining. Close jacket with centre front snap. Sew button to outside of right front, over snap.