

128 Dress

Sizes 36, 38, 40, 42, 44

Length from waist 82 cm (32 1/2 ins)

3/4-sleeves, approx. 46 cm (18 ins) long

Materials

Organza with cutwork pattern,
width: 150 cm (59 ins)
length: 2.40 – 2.40 – 2.50 – 2.60 – 2.60 m
(2 5/8 – 2 5/8 – 2 3/4 – 2 7/8 – 2 7/8 yds).

Lining,
width: 140 cm (55 ins)
length: 1.70 – 1.80 – 1.85 – 1.90 – 2.00 m
(1 7/8 – 2 – 2 1/8 – 2 1/8 – 2 1/4 yds).

Vilene Bias Tape/ stay tape.

1 invisible zip, 60 cm (24 ins) long.

Recommended fabrics: Lightweight dress fabrics with some body.

Preparations

Print the pattern out on letter or A4 sized paper. It is **very important** to not scale or fit any of the pages, you must print the document in **actual size**. Your pattern will print on multiple pages, which you will then tile together. Arrange the sheets on a large, hard and flat surface matching up the numbers and letters (i.e. 6A to 6A). Cut or fold one of the sides and match the edge to it's corresponding side. Then, tape down in place so paper is secure.

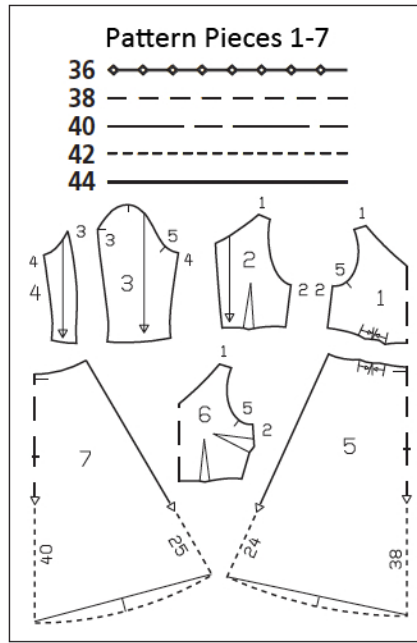
Trace the pattern pieces from the pattern sheet following the lines and markings for your size.

The pleat arrows on piece 1 are marked for size 36. For the other sizes, mark the pleat arrows according to the size lines.

burda style magazine patterns do not have seam allowance included.

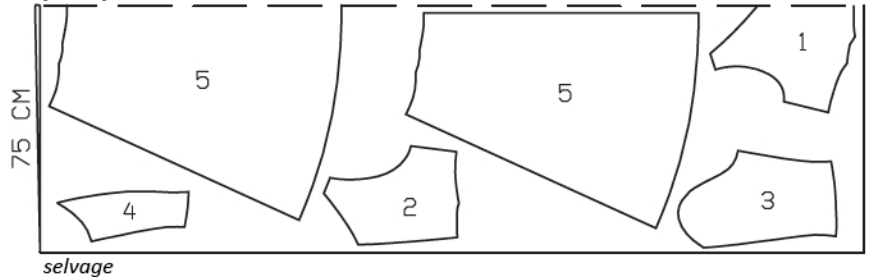
Seam and hem allowance to be added:

Seams, edges and hem 1.5 cm (5/8 in), sleeve hems 2 cm (3/4 in). Cut the lining pieces with 1.5 cm (5/8 in) wide seam and hem allowances.

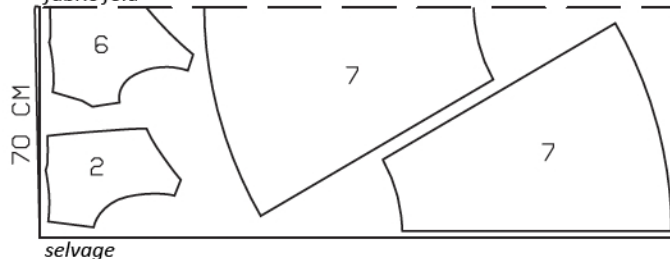


Cut from a double layer of fabric, right side facing in. Match fabric pattern at seams.

Organza, 150cm wide
fabric fold



Lining, 140cm wide
fabric fold



Cutting Out

Organza:

- 1 bodice front, on a fold 1x
- 2 bodice back 2x
- 3 sleeve front 2x
- 4 sleeve back 2x
- 5 front skirt panel, on a fold 1x
- 5 back skirt panel 2x

Lining:

- 2 bodice back 2x
- 6 bodice front, on a fold 1x
- 7 front skirt panel, on a fold 1x
- 7 back skirt panel 2x

Vilene Bias Tape/stay tape: Iron to wrong side of neck and armhole edges of lining pieces.

Sewing

Stitch darts in bodice back pieces. Press darts toward centre back. Fold pleats in lower edge of bodice front and upper edge of skirt in direction of arrows and baste.

Stitch side seams of skirt and bodice. Stitch shoulder seams, beginning and ending stitching exactly at marked neck edge. Press seam allowances open.

Stitch skirt to bodice. Press seam allowances up.

Sew invisible zip in place, see the "Helpful Hint" on next page and to stitch centre back seam.

Stitch darts and seams of lining, leaving slit open for zip, 2 cm (3/4 in) longer than marked.

Neck edge: Pin lining right sides together with neck edge of dress. At zip slit, turn lining back, approx. 5 mm (3/16 in) before slit edge, and pin to neck edge. At slit edges of dress, turn allowances to outside and pin to neck edge, over lining. Stitch along neck edge. Trim seam allowances. At front, clip allowances into point of neck edge. Turn lining and allowances at slit edges to inside. Sew lining to zip tapes. Baste lining at armhole edges.

Stitch sleeve seams. Trim seam allowances to 7 mm (1/4 in), neaten edges of allowances together, and press allowances toward back. Press sleeve hem allowances to inside, fold under by half width, and sew in place by hand.

Set in sleeves.

Press hem allowance to inside and sew in place by hand. Hem lining so that it is approx. 2 cm (3/4 in) shorter than dress.





These special zippers come in various lengths. The zipper should be at least 2 cm (3/4 in) longer than the slit. It is sewn in place before the seam below the slit is stitched. A special presser foot is required to sew the zipper in place.

Sewing the zipper in place:

Open the zipper and push the coil back with your thumbnail to reveal the seam marking between the tape and the coil. Place the open zipper right side down on the right fabric side of one slit edge.

In order to stitch the zipper in place exactly along the marked seam line, you must first calculate the distance between the tape edge and the fabric edge as follows: width of seam allowance minus 1 cm (3/8 in) tape width = distance from edge of fabric. This will yield a value of 5 mm (3/16 in) if the width of the seam allowance is 1.5 cm (5/8 in).

Pin the top end of the zipper tape in place, the calculated distance from the edge of the fabric. The bottom end of the zipper will extend past the marked end of the slit. Place the presser foot on the zipper so that the coil is in the notch to the right of the needle (1). Stitch zipper in place, from the top to the marked end of the slit. Close zipper.

Place the other zipper tape face down on the opposite slit edge and pin in place at the top. Open zipper again. Place the presser foot on the top end of the zipper so that the coil is in the notch to the left of the needle (2). Sew the zipper in place, from the top to the end of the slit. Close zipper.

Now stitch the seam below the zipper, from bottom to top. Turn the loose lower end of the zipper out of the way, over the seam allowance. Stitch as close as possible to the last stitches of the zipper seams. Trim away excess zipper and bind the end with a scrap of fabric.