

### 130B Top

Sizes 34, 36, 38, 40, 42

Back length approx. 77 cm (30 1/2 ins)

Sleeves approx. 5 cm (2 ins) longer than normal

### Materials

Note: On the lower edges of the garment and sleeves, the knit stitches of the knit fabric are picked up with a knitting needle and cast off. To do this, the remaining knit fabric will be unraveled and the yarn wound to a ball. Choose a needle size to match the weight of the fabric's yarn.

Knit mohair fabric with widthwise stripes, width: 145 cm (57 ins) length: 1.75 m (2 yds) for all sizes.

Vilene Bias Tape/ stay tape.

Narrow ribbon, width: 1 cm (3/8 in) length: 0.40 m (1/2 yd).

Elastic, width: 5 mm (3/16 in) length: 0.60 m (3/4 yd).

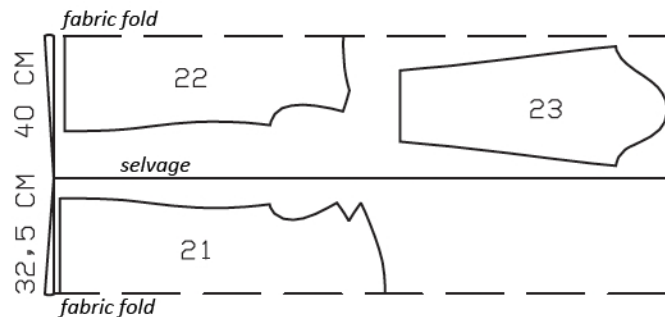
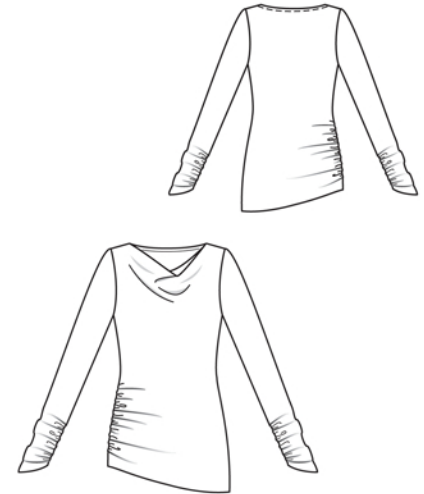
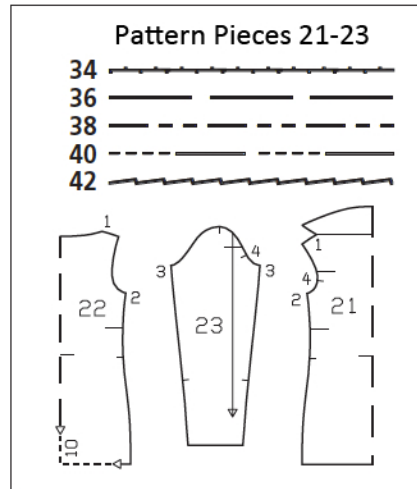
1 long circular knitting needle. For the original fabric, we used a size 3.5 mm (US 4-5) circular knitting needle.

Recommended fabrics: Jersey or knits. For knits, use only fabrics which can be easily unraveled.

### Preparations

Print the pattern out on letter or A4 sized paper. It is **very important** to not scale or fit any of the pages, you must print the document in **actual size**. Your pattern will print on multiple pages, which you will then tile together. Arrange the sheets on a large, hard and flat surface matching up the numbers and letters (i.e. 6A to 6A). Cut or fold one of the sides and match the edge to it's corresponding side. Then, tape down in place so paper is secure.

Trace the pattern pieces from the pattern sheet following the lines and markings for your size.



Fold the fabric as shown in the pattern layout, right side facing in. Match stripes.

### Cutting Out

21 front, on a fold 1x  
22 back, on a fold 1x  
23 sleeve 2x

Note: Lay the pattern pieces on the knit fabric as shown in the pattern layout. Make sure that the lower edge of each pattern piece lies along a line of knit stitches. Cut out pieces, adding seam and hem allowances. Unravel the stitches of the remaining knit fabric and wind firmly in a ball, to smooth out the yarn.

Vilene Bias Tape/ stay tape: Iron to wrong side of armhole edges and front shoulder seam edges.

burda style magazine patterns do not have seam allowance included.

Seam and hem allowance to be added:  
Seams and edges 1.5 cm (5/8 in), hem 2 cm (3/4 in).

## Sewing

On lower edges of front and back and on lower sleeve edges, unravel stitches as far as the hem line. Pick up the stitches with the circular knitting needle and cast off loosely.

Trim seam allowance of back neck edge to 8 mm (1/4 in). Work from right side to lay narrow ribbon on seam allowance of back neck edge so that edge of ribbon meets marked seam line. Stitch ribbon edge next to seam line. Turn ribbon and seam allowance to inside and stitch lower edge of ribbon in place.

Pin back shoulder edges right sides together with front shoulder edges. Lay self-facing of front on back, at fold line, and pin side facing ends to shoulder seams. Stitch shoulder seams. Trim seam allowances. Pull back out of front. Lay facing on front. Press shoulder seams but do not press fold edge.

Stitch side seams. Neaten seam allowances together. For the gathering at right side seam, stitch a 26 cm (10 1/4 in) long piece of elastic to each seam allowance, directly next to seam, stretched from marking to hem line.

Stitch sleeve seams. For the gathering, stitch one 14 cm (5 1/2 in) long piece of elastic to each seam allowance as described for the side seams. Turn in hem allowances and stitch in place with the twin needle.

Set in sleeves.

At lower ends of side seams and sleeve seams, sew allowances to hem edge.

