

128 Skirt

Sizes 36, 38, 40, 42, 44

Skirt length 72 cm (28 1/2 ins)
(upper skirt edge = waist)

Materials

Herringbone,
width: 145 cm (57 ins)
length: 0.80 m (7/8 yd) for all sizes.

Lining,
width: 140 cm (55 ins) length: 0.80 m (7/8 yd).

A piece of interfacing.

Vilene Bias Tape/ stay tape.

Imitation leather band,
width: 2 cm (3/4 in)
length: 0.75 – 0.80 – 0.85 – 0.90 – 0.90 m
(7/8 – 7/8 – 1 – 1 – 1 yd).

1 invisible zip, 22 cm (9 ins) long.

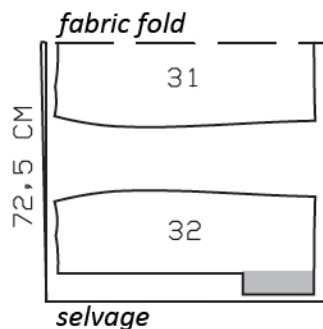
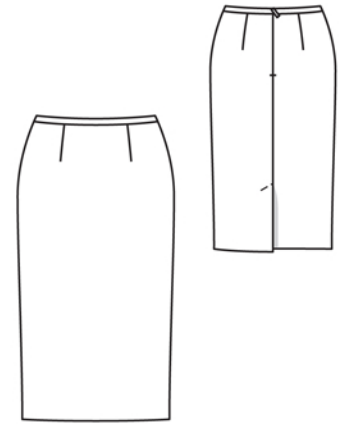
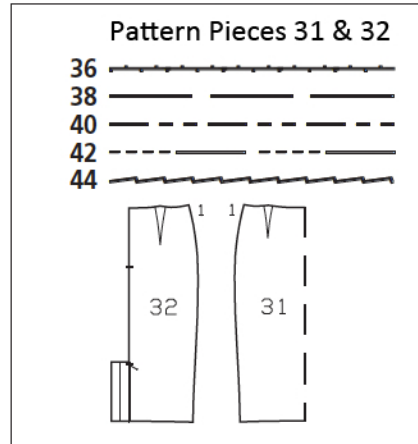
Recommended fabrics: Skirt fabrics of wool or blends.

Preparations

Print the pattern out on letter or A4 sized paper. It is **very important** to not scale or fit any of the pages, you must print the document in **actual size**. Your pattern will print on multiple pages, which you will then tile together. Arrange the sheets on a large, hard and flat surface matching up the numbers and letters (i.e. 6A to 6A). Cut or fold one of the sides and match the edge to it's corresponding side. Then, tape down in place so paper is secure.

Trace the pattern pieces from the pattern sheet following the lines and markings for the correct size and the correct style (128). This pattern also includes pattern pieces, lines and markings for style 127 that should be ignored.

Note different lines for right and left edges of back vent but first cut the skirt panels the same size, from the double layer of fabric.



Cut from a double layer of fabric, right side facing in.

Cutting Out

Herringbone:

31 front skirt panel, on a fold 1x
32 back skirt panel 2x

Lining: piece 31, piece 32 without vent allowance.

Interfacing: See shaded area on pattern layout.

burda style magazine patterns do not have seam allowance included.

Seam and hem allowance to be added:

Seams and edges 1.5 cm (5/8 in), hem 4 cm (1 5/8 ins), lining 1.5 cm (5/8 in).

Sewing

Stitch front and back darts, backstitching to tie-off stitching at seam line on upper edge.

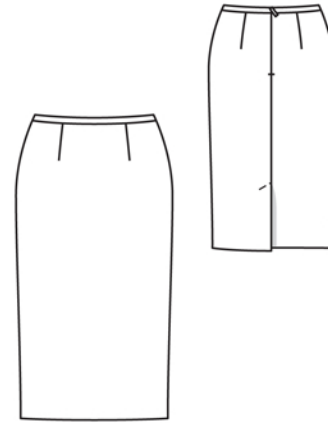
Stitch side seams, beginning exactly at marked upper seam line and not stitching upper seam allowances together. Press seam allowances open.

Bind upper skirt edge: Trim away allowance on upper skirt edge. On wrong side of imitation leather band, use a soft pencil to mark fold edge 8 mm (a generous 1/4 in) from one long edge. Lay inner side of upper skirt edge on narrower part of band, along marked fold edge. Stitch 7 mm (1/4 in) from edge. Do not yet stitch outer half of band in place.

Sew invisible zip in place, from marking, see the "Helpful Hint" on next page. Leave zip tapes extending at upper skirt edge. Stitch centre back seam from vent to zip slit.

Vent and hem: Press seam allowances of centre seam open and press left vent facing to inside. Turn right vent underlap to left skirt back. Above vent, press allowance of right back skirt panel to inside, tapering as you go, to avoid the need to clip allowances. On left vent edge, trim facing to a width of 4 cm (1 5/8 ins). Press facing of vent underlap to inside. Unfold vent facings at hem. Press hem allowance to inside and sew in place by hand. Turn facings to inside again and sew in place, over hem. Topstitch left skirt back at top of vent, diagonally as marked, catching underlap.

Stitch darts and seams of lining. Slide upper edge of skirt lining under upper edge of skirt and pin so that edge of lining lies on skirt, 1.5 cm (5/8 in) wide. Turn under allowances on slit edges of lining. Edgestitch outer half of band in place, thereby also catching lining. Pull lining into skirt, turn edges under, and sew to zip tapes.



Hem lining so that it is approx. 2 cm (3/4 in) shorter than skirt. At vent, sew lining to inside edge of underlap facing. Cut a rectangle from other edge of lining, to 1 cm (3/8 in) before fold edge of vent underlap and to 1 cm (3/8 in) below top of vent. Clip diagonally into top corner, approx. 1 cm (3/8 in) long. Turn lining edges under and sew to inside edge of vent facing and to underlap, horizontally, at top.



These special zippers come in various lengths. The zipper should be at least 2 cm (3/4 in) longer than the slit. It is sewn in place before the seam below the slit is stitched. A special presser foot is required to sew the zipper in place.

Sewing the zipper in place:

Open the zipper and push the coil back with your thumbnail to reveal the seam marking between the tape and the coil. Place the open zipper right side down on the right fabric side of one slit edge.

In order to stitch the zipper in place exactly along the marked seam line, you must first calculate the distance between the tape edge and the fabric edge as follows: width of seam allowance minus 1 cm (3/8 in) tape width = distance from edge of fabric. This will yield a value of 5 mm (3/16 in) if the width of the seam allowance is 1.5 cm (5/8 in).

Pin the top end of the zipper tape in place, the calculated distance from the edge of the fabric. The bottom end of the zipper will extend past the marked end of the slit. Place the presser foot on the zipper so that the coil is in the notch to the right of the needle (1). Stitch zipper in place, from the top to the marked end of the slit. Close zipper.

Place the other zipper tape face down on the opposite slit edge and pin in place at the top. Open zipper again. Place the presser foot on the top end of the zipper so that the coil is in the notch to the left of the needle (2). Sew the zipper in place, from the top to the end of the slit. Close zipper.

Now stitch the seam below the zipper, from bottom to top. Turn the loose lower end of the zipper out of the way, over the seam allowance. Stitch as close as possible to the last stitches of the zipper seams. Trim away excess zipper and bind the end with a scrap of fabric.