

131 Vest

Sizes 36, 38, 40, 42, 44

Back length approx. 47 cm (18 1/2 ins)

Materials

Stretch nappa leather. To make this style in size 38, you will need 2 leather skins with a total of approx. 16 sq. ft. (1 sq. ft. = 30 x 30 cm). Ask your leather dealer for leather requirements for larger sizes since leather skins can vary greatly. We recommend taking the entire paper pattern with you when buying the leather.

Wool gabardine,
width: 150 cm (59 ins)
length: 0.60 m (3/4 yd) for all sizes.

Lining,
width: 140 cm (55 ins)
length: 0.55 m (3/4 yd).

interfacing.

Vilene Bias Tape/ stay tape.

2 buttons and 1 flat inside button.

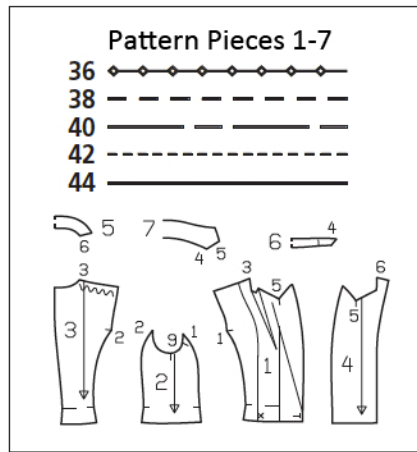
Shoulder pads.

Recommended fabrics: Jacket fabrics of wool or blends, combined with soft leather or imitation leather.

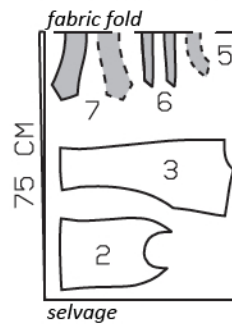
Preparations

Print the pattern out on letter or A4 sized paper. It is **very important** to not scale or fit any of the pages, you must print the document in **actual size**. Your pattern will print on multiple pages, which you will then tile together. Arrange the sheets on a large, hard and flat surface matching up the numbers and letters (i.e. 6A to 6A). Cut or fold one of the sides and match the edge to it's corresponding side. Then, tape down in place so paper is secure.

Trace the pattern pieces from the pattern sheet following the lines and markings for the correct size and the correct style (131). This pattern also includes pattern pieces, lines and markings for style 132 that should be ignored.



Wool Gabardine



Cut from a double layer of fabric, right side facing in.

Cutting Out

Leather:

1 front 2x
4 front facing 2x

Gabardine:

2 side piece 2x
3 back 2x
5 back facing, on a fold 1x
6 collar stand, on a fold 2x
7 collar, on a fold 2x

Lining: piece 1 to lining line, piece 3 minus width of facing and with an ease pleat of approx. 2 cm (3/4 in) at centre back, piece 2.

Interfacing: See shaded area on pattern layout. Also interface front facings and hem allowances. Iron Bias Tape/stay tape to wrong sides of armhole edges.

burda style magazine patterns do not have seam allowance included.

Seam and hem allowance to be added:

Seams and edges 1.5 cm (5/8 in), hem 4 cm (1 5/8 ins), lining 1.5 cm (5/8 in).

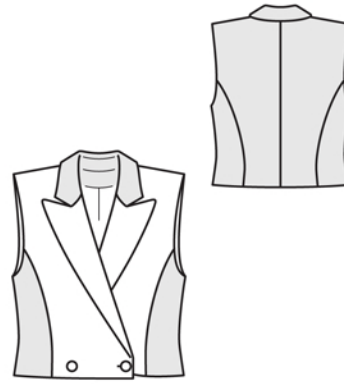
Sewing

Stitch centre back seam. Stitch side pieces to front pieces and to back piece. Stitch shoulder seams on waistcoat and on facing. Press seam allowances open.

Notched collar: Pin facing right sides together with waistcoat. Build a little extra fullness into corners of lapels. Stitch along front edges and edges of lapels, up to marking. Leave facing lying right sides together with waistcoat for the time being. On each front, cut along centre of lapel dart, approx. 10 cm (4 ins) long. Stitch collar stand pieces to collar pieces. Trim seam allowances and press open. Topstitch close to each side of seams. Stitch collar pieces together along outer edges, building a little extra fullness into top collar and beginning and ending stitching on narrow edges, exactly at seam line of attachment edge. Turn collar right side out. Lay collar between waistcoat and facing. Now first stitch under collar to neck edges of waistcoat fronts, from each seam mark to dart. Clip seam allowances of fronts at seam marks. Press allowances of collar attachment seams open. Then begin at centre back and stitch in both directions to stitch under collar to neck edge and continue on to stitch lapel darts. Press seam allowances of collar attachment seam open and press darts flat. Stitch top collar to facing, clipping seam allowance of facing at corners and seam ends. Press seam allowances open. Turn facing to inside. Pin collar attachment seams together exactly. Turn back facing up and stitch seam allowances together, close to collar attachment seam. Turn facing down again.

Unfold facing at hem. Press hem allowance to inside, then unfold down again.

Sew lining: On back lining pieces, stitch allowances of centre seam together, 1 cm (3/8 in) from edge. For the ease pleat, stitch along centre back at top and bottom, each approx. 5 cm (2 ins) long, and baste in between. Press pleat to one side. Stitch seams of lining.



Stitch lining right sides together with inside facing edge. Press seam allowances onto lining. Lay lining inside waistcoat, with wrong sides facing.

Turn armhole edges of main fabric and lining under at shoulder seam and pin with a single straight pin. On front, reach between main fabric and lining to first pull out one armhole. Remove the pin but keep hold of the edges. Stitch armhole edges together, right sides facing, from shoulder seam to seam mark on side piece. Trim seam allowances. Push edges in place again. Then work from back to pull out armhole edges and stitch together. Push edges in again. Stitch second armhole in same manner.

Turn hem allowance to inside and sew in place by hand. Turn facings to inside. Turn lining edge under along lower waistcoat edge and press fold edge lightly. Slide fold edge up and pin to hem allowance. Sew facings and lining in place. Lay extra length of lining down and press lightly.

Work one buttonhole each in right and left front – left buttonhole is for inside button. Sew buttons in place, to match buttonholes and as marked.

Cover shoulder pads with lining fabric. Sew shoulder pads in place.