

107 Dress

Sizes 36, 38, 40, 42, 44

Length from waist 47 cm (18 1/2 ins)

3/4-sleeves, 12 cm (4 3/4 ins) shorter than normal

Materials

Wool blend with houndstooth pattern, width: 150 cm (59 ins)
length: 1.55 – 1.55 – 1.60 – 1.60 – 1.60 m (1 3/4 yds).

A piece of nappa leather or imitation leather, approx. 20 x 65 cm (8 x 26 ins).

Interfacing.

1 invisible zip, 60 cm (24 ins) long.

Textile adhesive (e. g. Rudolfix, Gütermann Klebenaht HT 2) & Glue stick (Pritt, Tesa) & Magic chalk (Prym).

Recommended fabrics: Dress fabrics with some body. Soft leather or imitation leather as contrasting fabric.

Preparations

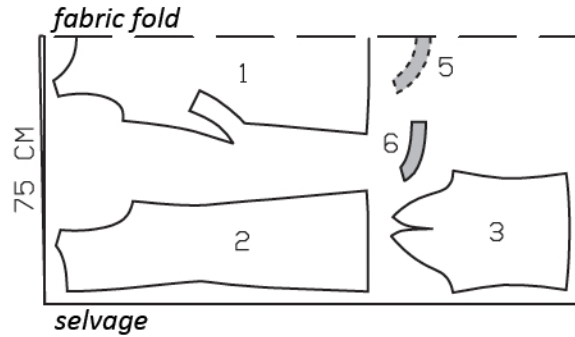
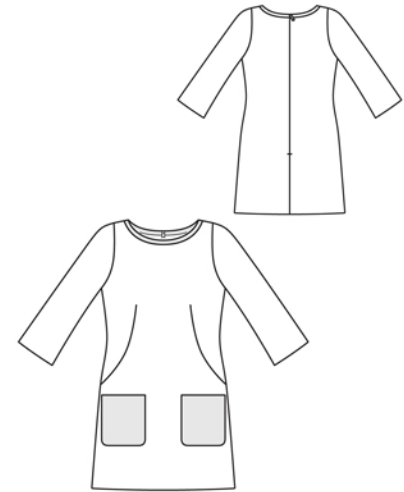
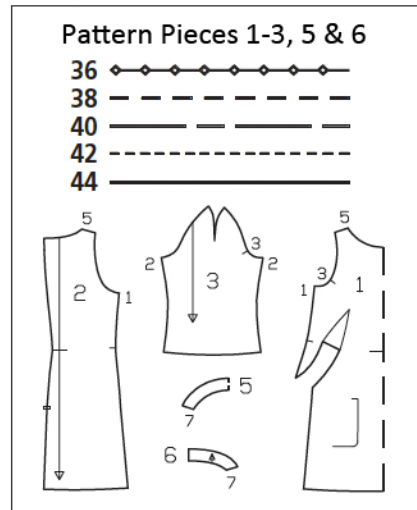
Print the pattern out on letter or A4 sized paper. It is very important to not scale or fit any of the pages, you must print the document in actual size. Your pattern will print on multiple pages, which you will then tile together. Arrange the sheets on a large, hard and flat surface matching up the numbers and letters (i.e. 6A to 6A). Cut or fold one of the sides and match the edge to it's corresponding side. Then, tape down in place so paper is secure.

Trace the pattern pieces from the pattern sheet following the lines and markings for the correct size and the correct style (107). This pattern also includes pattern pieces, lines and markings for style 106, 108 & 109 that should be ignored.

burda style magazine patterns do not have seam allowance included.

Seam and hem allowance to be added:

Seams and edges 1.5 cm (5/8 in), hem and sleeve hems 4 cm (1 5/8 ins) (flare sleeve hem allowance).
Cut leather pieces without allowances.



Cut from a double layer of fabric, right side facing in.

Cutting Out

Houndstooth:

- 1 front, on a fold 1x
- 2 back 2x
- 3 sleeve 2x
- 5 front neck facing, on a fold 1x
- 6 back neck facing 2x

Leather: (Draft the following pieces NOT included in the pattern)

2 pockets 19 cm (7 1/2 ins) long, incl. 3 cm (1 1/4 in) wide self-facing on upper edge, 14.5 cm (5 3/4 ins) wide,

Binding strip for neck edge 57 – 58.5 – 60 – 61 – 62.5 cm (22 1/2 – 23 1/8 – 23 3/4 – 24 – 24 5/8 ins) long, 3 cm (1 1/4 ins) wide.

Interfacing: See shaded area on pattern layout.

Sewing

Stitch front darts. Trim dart allowances to 1.5 cm (5/8 in) wide. Press darts open, pressing points flat.

Patch pockets: Round off lower corners of pockets (see also placement lines on piece 1). Fold self-facing on upper edge of each pocket to inside and glue (textile adhesive) in place. Edgestitch pockets to fronts, at placement lines. At upper pocket corners, stitch slanted thread bars, approx. 1 cm (3/8 in) long.

Sew invisible zip to back slit edges, see the "Helpful Hint" on next page. Begin and end at neck edge and leave top ends of zip tapes hanging. Stitch centre back seam from lower edge to zip. At neck edge, turn extending zip tapes down and sew in place.

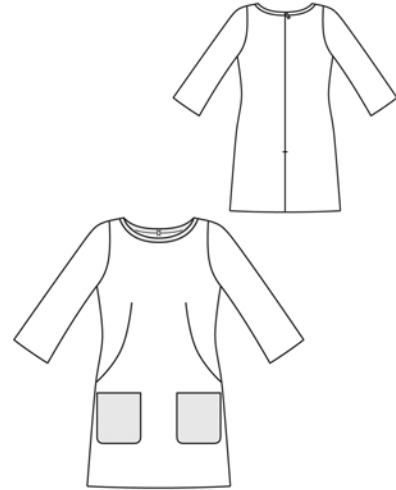
Stitch side seams and sleeve seams. Press seam allowances open. Press sleeve hem allowances to inside and sew in place by hand.

Stitch sleeve to armhole edges. Press allowances of sleeve attachment seams toward sleeves, down to beginning of underarm curve.

Stitch shoulder seams and sleeve darts, beginning exactly at marked neck edge. Press seams open, pressing points of darts flat. Stitch shoulder seams of facing, beginning and ending exactly at marked neck edge. Press seam allowances open.

Neck edge: On back facing ends, press seam allowances under, 5 mm (3/16 in) wider than marked. Lay facing on inside neck edge, with wrong sides facing. Stitch close to marked neck edge. Trim away allowances. Sew facing to zip tapes. Use vanishing chalk to mark a placement line for binding, 1.3 cm (1/2 in) from neck edge. Turn ends of binding under, 1 cm (3/8 in) wide, and glue in place. Lay strip on neck edge, at placement line, and hold in place with glue stick. Fold strip over neck edge and glue in place. Work from right side of garment to edgestitch binding in place.

Press hem allowance to inside and sew in place by hand.





These special zippers come in various lengths. The zipper should be at least 2 cm (3/4 in) longer than the slit. It is sewn in place before the seam below the slit is stitched. A special presser foot is required to sew the zipper in place.

Sewing the zipper in place:

Open the zipper and push the coil back with your thumbnail to reveal the seam marking between the tape and the coil. Place the open zipper right side down on the right fabric side of one slit edge.

In order to stitch the zipper in place exactly along the marked seam line, you must first calculate the distance between the tape edge and the fabric edge as follows: width of seam allowance minus 1 cm (3/8 in) tape width = distance from edge of fabric. This will yield a value of 5 mm (3/16 in) if the width of the seam allowance is 1.5 cm (5/8 in).

Pin the top end of the zipper tape in place, the calculated distance from the edge of the fabric. The bottom end of the zipper will extend past the marked end of the slit. Place the presser foot on the zipper so that the coil is in the notch to the right of the needle (1). Stitch zipper in place, from the top to the marked end of the slit. Close zipper.

Place the other zipper tape face down on the opposite slit edge and pin in place at the top. Open zipper again. Place the presser foot on the top end of the zipper so that the coil is in the notch to the left of the needle (2). Sew the zipper in place, from the top to the end of the slit. Close zipper.

Now stitch the seam below the zipper, from bottom to top. Turn the loose lower end of the zipper out of the way, over the seam allowance. Stitch as close as possible to the last stitches of the zipper seams. Trim away excess zipper and bind the end with a scrap of fabric.