

132 Jacket

Sizes 36, 38, 40, 42, 44

Back length approx. 75 cm (30 ins)

Materials

Wool gabardine,
width: 150 cm (59 ins)
length: black, 1.80 – 1.80 – 2.00 – 2.00 – 2.00 m
(2 – 2 – 2 1/4 – 2 1/4 – 2 1/4 yds)
white, 0.60 m (3/4 yd)
red, 0.15 m (1/4 yd).

Lining,
width: 140 cm (55 ins)
length: 1.20 – 1.25 – 1.25 – 1.40 – 1.40 m
(1 3/8 – 1 1/2 – 1 1/2 – 1 5/8 – 1 5/8 yds).

Interfacing.

6 large buttons and 8 smaller buttons.

1 flat inside button.

Shoulder pads.

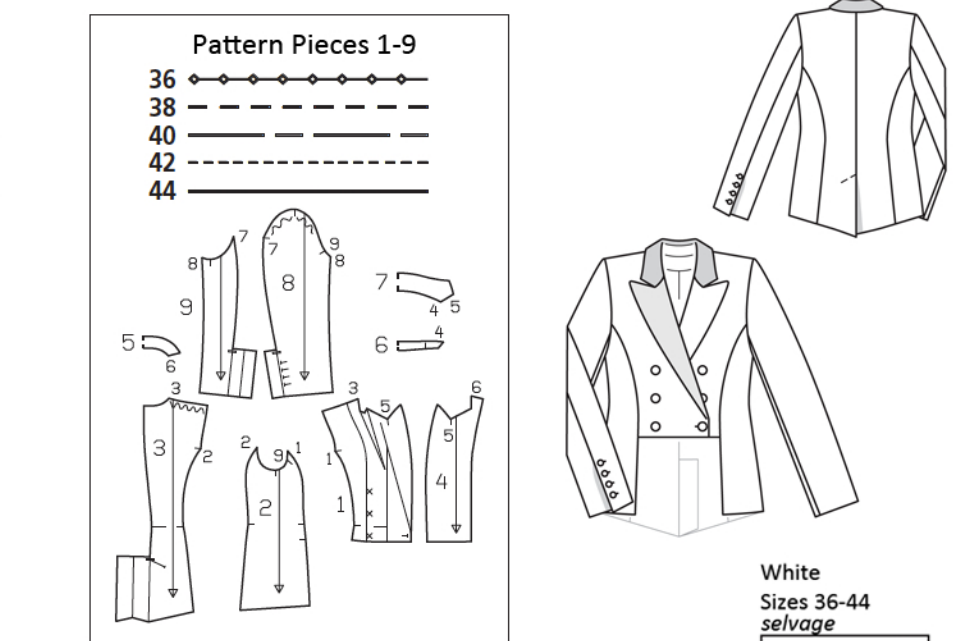
Recommended fabrics: Jacket fabrics with some body, of wool or blends.

Preparations

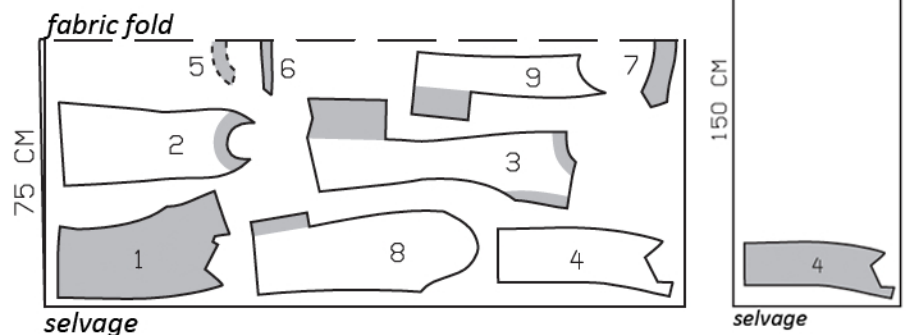
Print the pattern out on letter or A4 sized paper. It is **very important** to not scale or fit any of the pages, you must print the document in **actual size**. Your pattern will print on multiple pages, which you will then tile together. Arrange the sheets on a large, hard and flat surface matching up the numbers and letters (i.e. 6A to 6A). Cut or fold one of the sides and match the edge to it's corresponding side. Then, tape down in place so paper is secure.

Trace the pattern pieces from the pattern sheet following the lines and markings for the correct size and the correct style (132). This pattern also includes pattern pieces, lines and markings for style 131 that should be ignored.

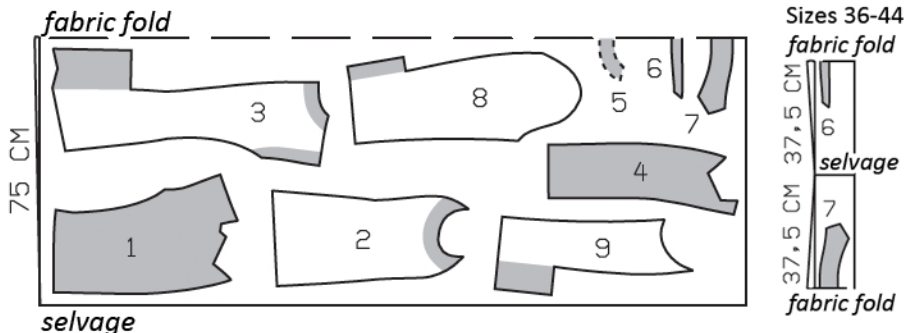
Note different lines on back piece for right and back vent edges but cut the right and left piece the same size initially from the double layer of fabric.



Wool Gabardine, 150cm wide
Sizes 36, 38



Sizes 40-44



White
Sizes 36-44
selvage

Red
Sizes 36-44
fabric fold

selvage
fabric fold

burda style magazine patterns do not have seam allowance included.

Seam and hem allowance to be added:

Seams and edges 1.5 cm (5/8 in); front vertical edge of side piece from hem to 4 cm (1 5/8 ins) above lower seam mark 4 cm (1 5/8 ins); hem and sleeve hems 4 cm (1 5/8 ins). Cut lining pieces with 1.5 cm (5/8 in) wide seam and hem allowances.

Cutting Out

Black fabric:

- 1 front 2x
- 2 side piece 2x
- 3 back 2x
- 4 left front facing 1x
- 5 back facing, on a fold 1x
- 6 outer collar stand, on a fold 1x
- 7 under collar, on a fold 1x
- 8 upper sleeve 2x
- 9 under sleeve 2x

White fabric:

- 4 right front facing 1x

Red fabric:

- 6 inside collar stand, on a fold 1x
- 7 top collar, on a fold 1x

Lining: piece 1 to lining line; piece 3 minus neck facing, without vent facing, and with an ease pleat of approx. 2 cm (3/4 in) at centre back; piece 2; pieces 8 and 9 without vent allowances.

Interfacing: See shaded area on pattern layout. Also interface hem allowances.

Sewing

Stitch centre back seam, leaving vent open. Clip seam allowance of right back diagonally at top of vent. Press seam allowances open. Press left vent facing to inside and trim away 1.5 cm (5/8 in) from marked "left edge" line. Turn right vent underlap toward left back, turn self-facing back at fold line and press.

Stitch side pieces to back. Stitch side pieces to fronts from seam number 1 to lower seam mark, leaving hem allowance of fronts loose. Press seam allowances open. Stitch shoulder seams on jacket and on facing.

Notched collar: Pin facing right sides together with waistcoat. Build a little extra fullness into corners of lapels. Stitch along front edges and edges of lapels, up to marking. Leave facing lying right sides together with waistcoat for the time being. On each front, cut along centre of lapel dart, approx. 10 cm (4 ins) long. Stitch collar stand pieces to collar pieces.



Trim seam allowances and press open. Topstitch close to each side of seams. Stitch collar pieces together along outer edges, building a little extra fullness into top collar and beginning and ending stitching on narrow edges, exactly at seam line of attachment edge. Turn collar right side out. Lay collar between waistcoat and facing. Now first stitch under collar to neck edges of waistcoat fronts, from each seam mark to dart. Clip seam allowances of fronts at seam marks. Press allowances of collar attachment seams open. Then begin at centre back and stitch in both directions to stitch under collar to neck edge and continue on to stitch lapel darts. Press seam allowances of collar attachment seam open and press darts flat. Stitch top collar to facing, clipping seam allowance of facing at corners and seam ends. Press seam allowances open. Turn facing to inside. Pin collar attachment seams together exactly. Turn back facing up and stitch seam allowances together, close to collar attachment seam. Turn facing down again.

Sew facings to lower front edges. Beginning at facing edges, turn hem allowances of fronts to inside and sew in place by hand. Sew inside facing edge to hem allowance.

Turn back vent facings back again.

On hem corners of side pieces and backs, work mitred corners, as follows: Turn wide allowances to outside and stitch diagonally. Trim allowances of diagonal seams to 5 mm (3/16 in) wide and press open. Turn wide allowances to inside and press.

Sew hem allowances of back and side pieces in place. Topstitch left back at top of vent at an angle, as marked, catching underlap.

Stitch sleeve seams, leaving vents open. Clip seam allowance of upper sleeves into corners. Press seam allowances open. At vents, turn facings and hem allowance to outside and mitre corners. Trim seam allowances of mitring seams. Turn facings and hem allowance to inside and press edges. Sew hem allowance in place by hand. On inside top of vent, stitch horizontally across facing and underlap. Work buttonholes for the smaller buttons.

Sewing Continued...

Set in sleeves, easing sleeve caps. Sew shoulder pads in place.

On back lining pieces, stitch allowances of centre seam together, 1 cm (3/8 in) from edge. For the ease pleat, stitch along centre back at top and bottom, each approx. 5 cm (2 ins) long, and baste in between. Press pleat toward right back. Stitch seams of lining and set in sleeves.

Stitch lining right sides together with inside facing edge, leaving approx. 8 cm (3 1/4 ins) open at bottom. Lay lining inside jacket, wrong sides facing, pulling linings into sleeves. Pin lining in place, approx. 5 cm (2 ins) above lower front edges. Trim away edge of lining side pieces, 2 cm (3/4 in) behind front side piece edge and even with lower front edge. Then trim lower lining edge forward, level with lower front edge. Clip diagonally up into corner, approx. 1 cm (3/8 in) long. Turn lining edge under, 1 cm (3/8 in) wide, and pin to allowances. At back vent, turn lining edge under and pin to vent facing of left back. Trim other lining edge to 1 cm (3/8 in) before pressed underlap edge. Clip 1 cm (3/8 in) diagonally into corner. Turn lining edge under and pin to right back vent facing. At top end of vent, pin lining to underlap. Above jacket hem, pin a fold, approx. 1 cm (3/8 in) deep, in lining. Turn lining edge under and sew to hem allowance by hand. Lay extra length of lining down and press. Sew remaining open edges of lining in place.

Sew sleeve linings: At upper end of one sleeve vent, pin lining seam to sleeve seam, sliding lining up slightly. At vent, turn back lining which lies on top. Turn under edge of lining which lies beneath and pin to underlap edge of under sleeve. Lay turned-back lining over vent. Trim to 1 cm (3/8 in) before underlap edge, trim away 1 cm (3/8 in) below end of vent, and clip approx. 1 cm (3/8 in) diagonally into corner. Turn lining edges under and pin to vent facing of upper sleeve and to underlap at top of vent. Turn lower lining edge under and pin to hem allowance. Sew lining in place. Sew lining of other sleeve in place in same manner.

Work one buttonhole each in right and left fronts – left buttonhole is for inside button. Sew buttons in place to match buttonholes and as marked.