

129 Parka

Sizes 36, 38, 40, 42, 44

Length from waist: 51 cm (20 1/4 ins) at centre front and 67 cm (26 1/2 ins) at centre back

Materials

Gabardine,
width: 140 cm (55 ins)
length: 4.00 – 4.05 – 4.05 – 4.10 – 4.10 m
(4 3/8 – 4 1/2 – 4 1/2 – 4 1/2 – 4 1/2 yds).

Fine jersey, for lining
width: 150 cm (59 ins)
length: 1.80 – 1.85 – 1.85 – 1.90 – 1.90 m
(2 – 2 1/8 – 2 1/8 – 2 1/8 – 2 1/8 yds).

Lining fabric for the sleeves,
width: 140 cm (55 ins)
length: 0.65 m (7/8 yd) for all sizes.

Elastic, 2.5 cm (1 in) wide and 0.55 – 0.55 – 0.60 – 0.60 – 0.60 m (3/4 yd) long.

6 flat buttons.

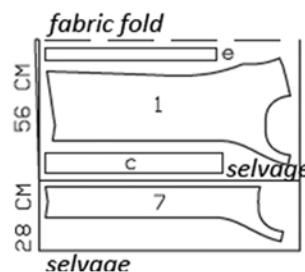
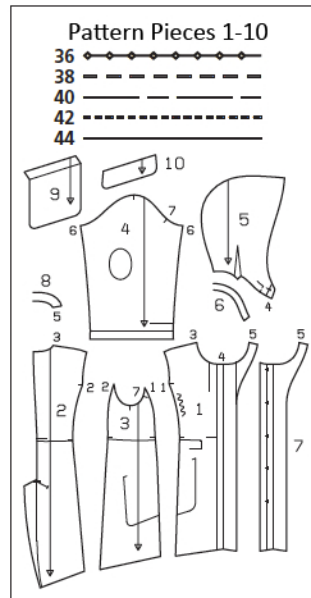
Recommended fabrics: Jacket fabrics with some body. Fine jersey for lining.

Preparations

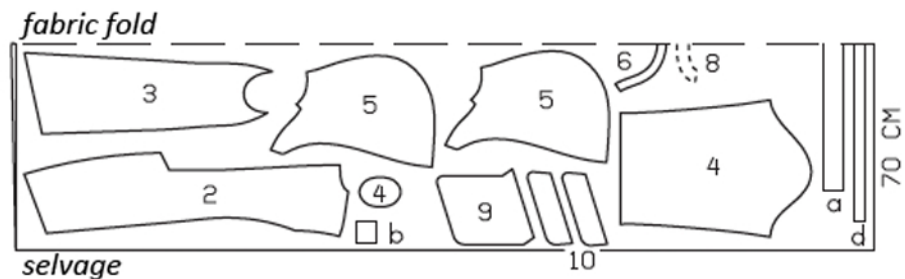
Print the pattern out on letter or A4 sized paper. It is **very important** to not scale or fit any of the pages, you must print the document in **actual size**. Your pattern will print on multiple pages, which you will then tile together. Arrange the sheets on a large, hard and flat surface matching up the numbers and letters (i.e. 6A to 6A). Cut or fold one of the sides and match the edge to it's corresponding side. Then, tape down in place so paper is secure.

Trace the pattern pieces from the pattern sheet following the lines and markings for your size.

Note different lines for right and left front fastening edges. Note different lines for right and left back vent edges but cut the right and left pieces the same size initially, from a double layer of fabric. Trace the elbow patches from piece 4 as a separate pattern piece.



Fold the fabric as shown in the pattern layout. Right side faces in on a double layer of fabric, right side faces up on a single layer of fabric.



The buttonholes on piece 7 are marked for size 36. For sizes 38 – 44, mark the top buttonhole the same distance from upper edge as for size 36. The bottom buttonhole is the same for all sizes. Space the other buttonholes evenly in between.

burda style magazine patterns do not have seam allowance included.

Seam and hem allowance to be added:
Seams and edges 1.5 cm (5/8 in).

Cutting Out

Gabardine:

- 1 front 2x
- 2 back 2x
- 3 side piece 2x
- 4 sleeve 2x
- elbow patch 2x
- 5 hood 4x
- 6 casing band, on a fold 1x
- 7 right buttonhole band 1x
- 8 back facing, on a fold 1x
- 9 pocket 2x
- 10 flap 4x

Draft the following pieces NOT included in the pattern:

- a) facing strip for waist casing, 100 – 104 – 108 – 112 – 116 cm (39 1/2 – 41 – 42 1/2 – 44 1/4 – 45 3/4 ins) long, 7 cm (2 3/4 ins) wide (incl. allowances),
- b) 2 facing strips for casing slits, 7 cm (2 3/4 ins) long, 5 cm (2 ins) wide (incl. allowances),
- c) drawstring band (waist), a total of 140 – 145 – 150 – 155 – 155 cm (55 1/4 – 57 – 59 – 61 – 61 ins) long, 8 cm (3 1/4 ins) wide, finished width 4 cm (1 5/8 ins),
- d) drawstring band (hood), 120 cm (47 1/4 ins) long, 4 cm (1 1/2 ins) wide, finished width 2 cm (3/4 in),
- e) 2 side fold strips for pockets, 68 cm (26 3/4 ins) long, 5 cm (2 ins) wide.

Jersey (lining): pieces 1 and 2 minus width of facing, piece 3.

Lining fabric: piece 4. Cut the sleeves 5 cm (2 ins) shorter than the paper pattern piece.



Sewing

Stitch centre back seam from upper edge to slit mark. On left back piece, trim vent edge to 1.5 cm (5/8 in) before marked "left edge" line. Clip allowances of centre back seam diagonally into corner. Press seam allowances onto left back. Topstitch close to centre back seam, from upper edge to clip.

Ease section seam edges of fronts from • to •. Stitch side pieces to front and back pieces. Press seam allowances onto front and back pieces. Topstitch close to seams. Stitch shoulder seams. Topstitch fronts close to shoulder seams and 7 mm (1/4 in) from shoulder seams.

Bellows pockets: Trim away seam allowances on upper ends of side fold strips for pockets. Press allowance on one long edge of each fold strip to inside. Stitch opposite long edge to side and lower edges of pocket piece, below fold line, right sides facing. Turn fold strips to inside and press pocket edges. Press narrow edges of facing to inside. Lay pressed-under inside edge of each fold strip under outer pocket edges and press. Press self-facing on upper edge of each pocket to inside. Pin narrow facing edges to pressed edge of fold strips. Lay pockets on fronts at placement lines. Pin fold strips in place and edgestitch in place, stitching as far as possible at top corners. Stitch top corners of pockets in place.

Flaps: For each flap, stitch 2 pieces together, right sides facing, leaving attachment edge open. Turn right side out. Topstitch close to edges and 7 mm (1/4 in) from edges. Trim allowances of attachment edges to 5 mm (3/16 in) wide. Stitch flaps in place, 2 cm (3/4 in) above pockets. Press flaps down and stitch, again 7 mm (1/4 in) from attachment seam.

Waist casing: Pin each facing strip (b) right sides together with front, over slit marking. Work from wrong side to stitch closely around slit mark. Slash between lines of stitching. Turn facing strip to inside and press slit edges. Topstitch close to slit edges. Baste facing strip (a) to inside of jacket, over marking casing lines. Stitch from right side as marked.

Sewing Continued...

On right front, trim self-facing to 1.5 cm (5/8 in) before marked "right edge" line. Press right facing to inside on fold line, then open out flat again. On right buttonhole band, press facing to inside, baste. Work buttonholes in buttonhole band. Lay buttonhole band face down on self-facing of right front, so that fold edge of band meets pressed fold of front edge. Baste.

On both fronts, turn self-facing to outside and stitch to back facing. Leave facings lying on jacket, right sides together, for the time being.

Stitch centre seam and darts on inside and outside hood units. Press seam allowances to one side. Press darts forward. Topstitch close to centre seams and again 7 mm (1/4 in) from seams. Topstitch close to darts.

On casing band for hood, press allowances of ends to inside. Edgestitch in place and stitch again, 7 mm (1/4 in) from edges. Press allowance of upper long edge to inside. Lay casing band on outer hood, at placement line. Edgestitch upper edge of band in place and baste lower edge in place.

Lay both hood units together, right sides facing. Stitch along front hood edge, beginning and ending exactly on seam line of attachment edge. Turn hood right side out.

Lay hood between jacket and facing. Stitch outer hood to neck edge of jacket and stitch inside hood to facing. Press seam allowances of hood attachment seams open. Turn facing to inside. Pin hood attachment seams together exactly. Turn facing up again and stitch seam allowances together, as far as possible, next to hood attachment seam.

Press allowance of each elbow patch to wrong side. Stitch elbow patches to sleeves, stitching close to edges and 7 mm (1/4 in) from edges. Stitch sleeve seams, leaving seam open below fold line, to insert elastic. Press seam allowances open. Press sleeve hem allowances to inside on fold line but do not yet stitch in place.

Set in sleeves. Topstitch jacket 5 mm (3/16 in) from sleeve attachment seams.

Stitch centre back seam of lining, leaving vent open 4 cm (1 5/8 ins) longer than marked. Stitch remaining seams of lining, leaving approx. 30 cm (12 ins) open in centre of one back section seam. Set in sleeve linings.

Stitch lining right sides together with inside facing edge. Lay facings and lining right sides together with jacket. Pin hem edges and back vent edges together, trimming left back lining piece to 1.5 cm (5/8 in) before marked "left edge" line. From beginning of vent, stitch along vent edges and continue along hem edges. Trim seam allowances, trimming corners diagonally. Turn jacket right side out through opening in section seam. Pull sleeve linings into jacket sleeves. Sew opening in centre back seam closed by hand. Press edges.

On each sleeve, turn lining edge under at the seam and pin to inside edge of hem allowance. Reach through seam opening, between jacket and lining, to first pull out one sleeve. Remove the pin but keep hold of the edge. Stitch edge of hem and lining together, right sides facing. Work from right side of garment to pull out sleeve and the lining will pull itself into the jacket sleeve. Stitch lining of other sleeve in same manner.

Edgestitch open edges of section seam closed.