

142 Blouse

Sizes 44, 46, 48, 50, 52

Back length approx. 90 cm (35 1/2 ins)

The back is 8 cm (3 1/4 ins) longer than the front

Materials

Shirt poplin, with lengthwise stripes, width: 150 cm (59 ins)
length: 2.70 – 2.75 – 2.80 – 2.85 – 2.90 m
(3 – 3 1/8 – 3 1/8 – 3 1/4 – 3 1/4 yds).

Interfacing.

9 buttons and 5 small, flat backing buttons.

Cord for the piping. 40 diamanté/rhinestone pins (Swarovski), 7 mm (1/4 in) in size.

Recommended fabrics: Shirt fabrics.

Preparations

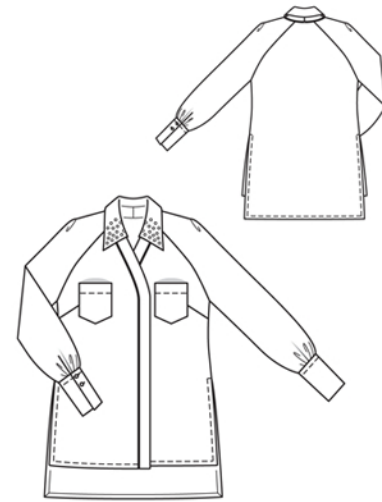
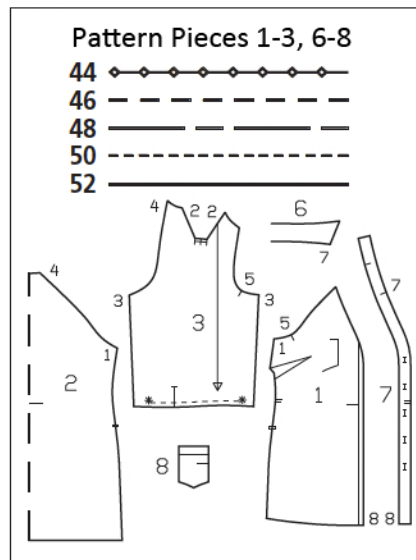
Print the pattern out on letter or A4 sized paper. It is **very important** to not scale or fit any of the pages, you must print the document in **actual size**. Your pattern will print on multiple pages, which you will then tile together. Arrange the sheets on a large, hard and flat surface matching up the numbers and letters (i.e. 6A to 6A). Cut or fold one of the sides and match the edge to its corresponding side. Then, tape down in place so paper is secure.

Trace the pattern pieces from the pattern sheet following the lines and markings for the correct size and the correct style (142). This pattern also includes pattern pieces, lines and markings for style 141 that should be ignored.

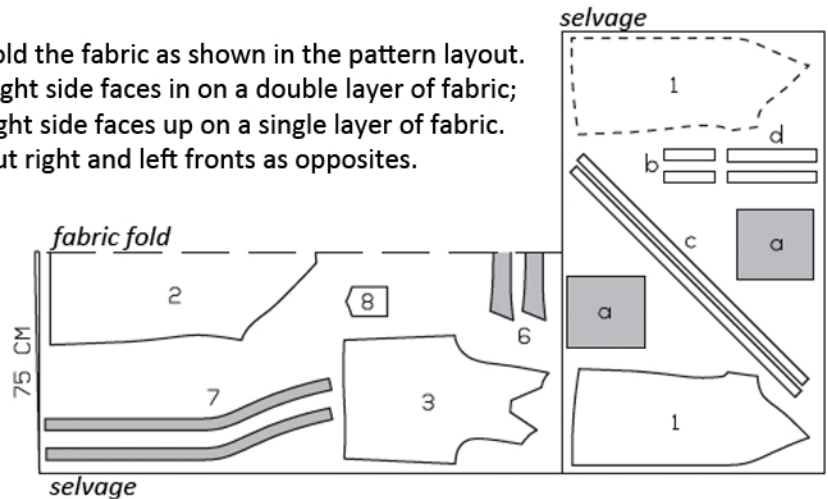
The pleat arrows on piece 3 are marked for size 44. For the other sizes, mark the pleat arrows according to the size lines.

burda style magazine patterns do not have seam allowance included.

Seam and hem allowance to be added:
Seams and edges 1.5 cm (5/8 in), hem and side slit edges 3 cm (1 1/4 ins).



Fold the fabric as shown in the pattern layout. Right side faces in on a double layer of fabric; right side faces up on a single layer of fabric. Cut right and left fronts as opposites.



Cutting Out

- 1 front 2x
- 2 back, on a fold 1x
- 3 sleeve 2x
- 6 collar, on a fold 2x
- 7 band 4x
- 8 pocket 2x

Draft the following pattern pieces NOT included in the pattern:

- a) 2 cuffs, with 2.5 cm (1 in) underlap, 24 – 25 – 25.5 – 26.5 – 27 cm (9 1/2 – 9 7/8 – 10 – 10 1/2 – 10 3/4 ins) long, 26 cm (10 1/4 ins) wide, finished width 13 cm (5 1/8 ins),
- b) 2 binding strips for sleeve vents, each 17 cm long, 4 cm (1 5/8 ins) wide (incl. allowances),
- c) 2 bias piping strips, each 108 cm (42 1/2 ins) long, 3 cm (1 1/4 ins) wide (incl. allowances),
- d) 2 narrow bands, each 30 cm (12 ins) long, 4 cm (1 5/8 ins) wide (incl. allowances).

Interfacing: See shaded area on pattern layout.

Sewing

Stitch bust darts. Press darts up. Stitch side seams, leaving slits open. Press seam allowances open.

Hem and side slits: Press hem and slit allowances to inside, turn half in, and press again. Turn folded allowances to outside and mitre corners. Trim allowances of mitring seams to 5 mm (3/16 in) and press open. Turn hem and slit allowances to inside and baste in place. Topstitch 1.5 cm (5/8 in) from hem and slit edges.

Slash sleeve vents as marked. Spread cut edges open to a straight line and stitch to one long edge of binding strip, as narrowly as possible. Press binding strip over attachment seam into vent, then fold to a width of 1 cm (3/8 in), turn edge under, and sew to attachment seam. On inside at top of vent, stitch diagonally across binding. On front vent edges, turn binding to inside and baste to lower edge. Finished binding width = 7 mm (1/4 in).

Sew sleeves: Fold sleeves lengthwise, right side facing in. Stitch pleat seams (seam number 2), from neck edge to corner. Lay pleats in direction of arrows and press seams open. Work from inside to stitch across pleat folds. Stitch sleeve seams. Gather lower sleeve edges between asterisks.

Stitch cuffs to lower sleeve edges, at back vent edges leaving underlap extending by 2.5 cm (1 in). Press seam allowances of attachment seams and of other long cuff edges onto cuffs. Fold cuffs lengthwise, right side facing in. Stitch along ends and upper underlap edges, turning allowances of upper underlap edge up again to do so. Trim allowances, trimming corners diagonally. Turn cuffs right side out. Sew inside edges in place by hand. Topstitch cuffs close to attachment seam and 1 cm (3/8 in) from seam.

Stitch sleeves to fronts and back (seam numbers 4 and 5). Above underarm curves, press seam allowances toward sleeves.

Piping: Stitch bias strips together to form one long strip. Press seam allowances open. Fold



bias strip in half lengthwise, wrong side facing in. Lay cord between layers of folded strip, along the fold. Use the zipper foot of your sewing machine to stitch close to piping cord. Baste piping to front and neck edges so that piping cord lies on garment piece, next to seam line. Turn piping ends under, toward seam allowances.

Stitch centre back seam of band pieces. Stitch outer band to vertical front edges and neck edge, catching piping tape. Press seam allowances onto band.

Fold narrow band pieces in half lengthwise and press, wrong side facing in. Unfold bands again. Now fold each edge into to the pressed fold and press again. Edgestitch fold edges together. Baste one narrow band to front edge of left front band, between seam marks. Stitch second narrow band to seam allowance of right side seam, between seam marks.

Arrange and pin diamantés/rhinestones) to front ends of upper collar as illustrated, leaving 1 cm (3/8 in) next to each seam line free. Use the zipper foot of your sewing machine to stitch collar pieces together along outer edges, right sides facing. Trim seam allowances. Turn collar right side out and press. Baste attachment edges of collar together to neck edge of band, between seam numbers 7.

Lay inside band on attached band, right sides facing, and pin edges together, catching collar. Stitch along front and neck edges. On right front edge, turn inside band forward. Work buttonholes for concealed fastening in inside band. Turn band back in place again. Stitch across lower band ends. Trim seam allowances. Turn band right side out. Turn inside band edge under, over attachment seam, and baste in place. Topstitch band close to attachment seam and outer edge.

Patch pockets: Turn self-facings on upper pocket edges to inside, turn edge under, and stitch as marked. Press remaining pocket allowances to inside. Pin pockets to fronts, at placement lines. Edgestitch pockets in place.

Work 2 buttonholes in front cuff end of each cuff – 1 cm and 3.5 cm (3/8 in and 1 1/2 ins) below attachment seam. Lay right front on left front, matching centre fronts, and mark placement of buttons. Sew buttons in place as marked, catching backing buttons on inside.