

138B Tunic

Sizes 44, 46, 48, 50, 52

Back length approx. 80 cm (31 1/2 ins)

Materials

Tulle lace with two scalloped edges,
width: 95 cm (38 ins)
length: 2.40 – 2.50 – 2.60 – 2.70 – 2.80 m
(2 5/8 – 2 3/4 – 2 7/8 – 3 – 3 1/8 yds).

Crêpe satin, for lining
width: 140 cm (55 ins) (without sleeves)
length: 1.80 – 1.80 – 1.80 – 1.85 – 1.85 m
(2 – 2 – 2 – 2 1/8 – 2 1/8 yds).

Interfacing.

Recommended fabrics: Lightweight, sheer fabrics,
backed with fine, softly draping fabrics.

Preparations

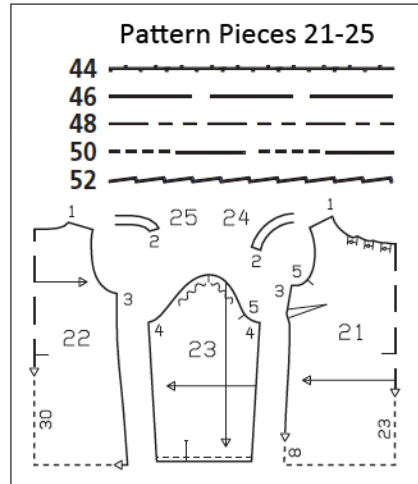
Print the pattern out on letter or A4 sized paper.
It is **very important** to not scale or fit any of the
pages, you must print the document in
actual size. Your pattern will print on multiple
pages, which you will then tile together. Arrange
the sheets on a large, hard and flat surface
matching up the numbers and letters (i.e. 6A to
6A). Cut or fold one of the sides and match the
edge to it's corresponding side. Then, tape down
in place so paper is secure.

Trace the pattern pieces from the pattern sheet
following the lines and markings for the correct
size and the correct style (138B). This pattern also
includes pattern pieces, lines and markings for
style 138A that should be ignored.

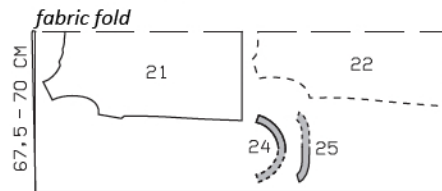
The pleat arrows on piece 21 are marked for size
44. For the other sizes, remark the pleat arrows
accordingly.

burda style magazine patterns do not have seam
allowance included.

Seam and hem allowance to be added:
Seams and edges 1.5 cm (5/8 in), hem and sleeve
hems 4 cm (1 5/8 ins), lining 1.5 cm (5/8 in).

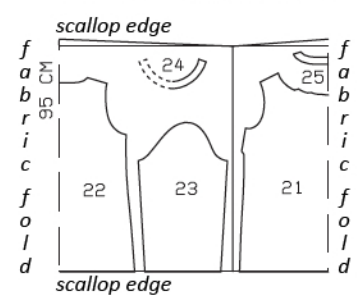


Crêpe Satin, 135cm wide



Right side faces in on a double layer of
fabric; right side faces up on a single
layer of fabric. Cut right and left sleeves
as opposites. Pin the scalloped edges to-
gether exacty.

Tulle Lace, 95cm wide



Cutting Out

Tulle lace:

- 21 front, on a fold 1x
- 22 back, on a fold 1x
- 23 sleeve 2x
- 24 front neck facing, on a fold 1x
- 25 back neck facing, on a fold 1x

Place lower edges of front, back and sleeves on the scalloped edge of the
lace.

Crêpe satin (lining):

pieces 21, 22, 24, and 25.

Interfacing: See shaded areas on pattern layout.

Sewing

Stitch bust darts in front pieces of main fabric and lining. Press darts down. Stitch side seams and shoulder seams on pieces of main fabric as french seams and lining. Trim seam allowances to 7 mm (1/4 in) wide, neaten edges together, and press allowances toward back.

French seam (double seam): First lay the fabric pieces together with wrong sides facing and stitch the 1.5 cm (5/8 in) wide seam allowances together, 7 mm (1/4 in) from fabric edge. Press seam allowances open. Then lay the pieces together with right sides facing and with the seam exactly along the fold. Now stitch along the marked seam line, 8 mm (a generous 1/4 in) from the fold edge. Press seam allowances to one side. Sew lower ends of seam allowances in place by hand.

Lay front and back pieces of chiffon on corresponding lining pieces with wrong side facing right side. Baste together along neck and arm-hole edges. Lay pleats in front neck edge in direction of arrows and baste.

Neck edge: Baste chiffon facing pieces to lining pieces, with wrong side facing right side. Treat these pieces as one layer of fabric from now on. Stitch shoulder seams on facing. Stitch facing to neck edge, right sides together. Trim seam allowances. Turn facing up and stitch to seam allowances, close to seam. Turn facing to inside. Press edge. Sew facing to shoulder seams.

Stitch sleeve seams. Trim seam allowances, neaten edges together, and press to one side. Gather lower sleeve edges to match sleeve bands.

Set in sleeves, easing sleeve caps.

Finish hem edge with closely spaced zigzag stitching: Press hem allowance to wrong side. Work from right side to stitch along fold edge with short, closely spaced zigzag stitches. Carefully trim allowance close to stitching. Finish hem edge of lining with closely spaced zigzag stitches.

