

137 Dress

Sizes 44, 46, 48, 50, 52

Length of dress from waist 62 cm (24 1/2 ins)

Materials

Wool crêpe,
width: 150 cm (59 ins)
length: 2.35 – 2.35 – 2.40 – 2.40 – 2.40 m
(2 5/8 yds).

A piece of lining for the pocket pieces, approx. 30 x 35 cm (12 x 14 ins).

Interfacing.

Vilene Bias Tape/stay tape.

Invisible zips, 2 zips 22 cm (9 ins) long and 1 zip 60 cm (24 ins) long.

Recommended fabrics: Dress fabrics of wool or blends.

Preparations

Print the pattern out on letter or A4 sized paper. It is **very important** to not scale or fit any of the pages, you must print the document in **actual size**. Your pattern will print on multiple pages, which you will then tile together. Arrange the sheets on a large, hard and flat surface matching up the numbers and letters (i.e. 6A to 6A). Cut or fold one of the sides and match the edge to it's corresponding side. Then, tape down in place so paper is secure.

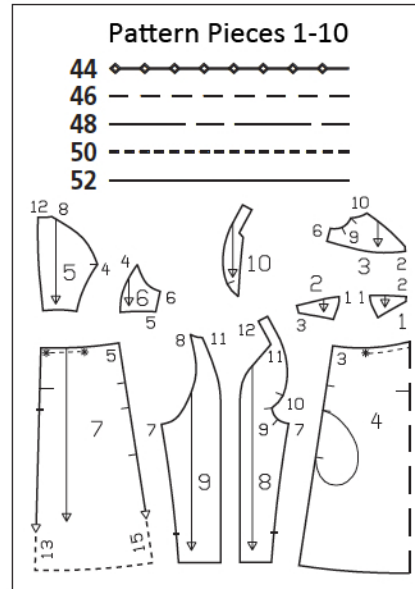
Trace the pattern pieces from the pattern sheet following the lines and markings for your size.

Trace the pocket piece from piece 4 as a separate pattern piece – it is the same for all sizes.

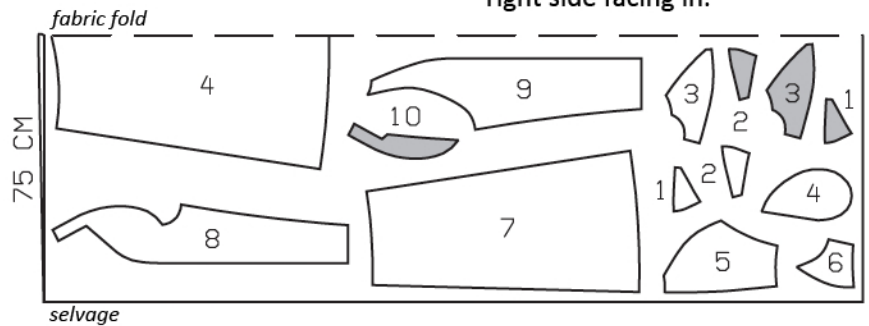
burda style magazine patterns do not have seam allowance included.

Seam and hem allowance to be added:

Seams and edges 1.5 cm (5/8 in), hem and sleeve hems 4 cm (1 5/8 ins).



Cut from a double layer of fabric, right side facing in.



Cutting Out

Wool crêpe:

- 1 centre lower bust piece 4x
- 2 side lower bust piece 4x
- 3 upper bust piece 4x
- 4 lower front, on a fold 1x
pocket piece 2x
- 5 centre upper back 2x
- 6 side upper back 2x
- 7 lower back 2x
- 8 sleeve front integrated collar 2x
- 9 sleeve back 2x
- 10 facing 2x

Lining: pocket piece (piece 4).

Interfacing: See shaded area on pattern layout. Interface outer bust pieces. Iron Vilene Bias Tape/stay tape to wrong side of back armhole edges (pieces 5 and 6) and back neck edges (pieces 5 and 9). Iron Vilene Bias Tape/ stay tape, approx. 20 cm (8 ins) long, to wrong side of sleeve fronts, on shoulder seam edges. Also iron Vilene Bias Tape/stay tape to wrong side of zip slit edges on upper and lower back pieces.

Sewing

Outer and inner bust pieces: Stitch centre lower bust pieces to side lower bust pieces. Stitch upper bust pieces to lower bust units. Stitch centre front seam, beginning and ending exactly at seam lines on upper and lower edges. Press seam allowances open. Pin inner bust units right sides together with outer bust units. Stitch along neck edge, beginning at corner near seam number 10. Trim seam allowances. Turn inner bust units up and stitch to seam allowances, close to seam. Turn inner bust units to inside and press neck edge.

Gather lower front between asterisks. Stitch outer bust units to lower front. Press seam allowances up. Turn edges of inner bust units under and sew to attachment seams. Baste remaining bust edges together, not turned under.

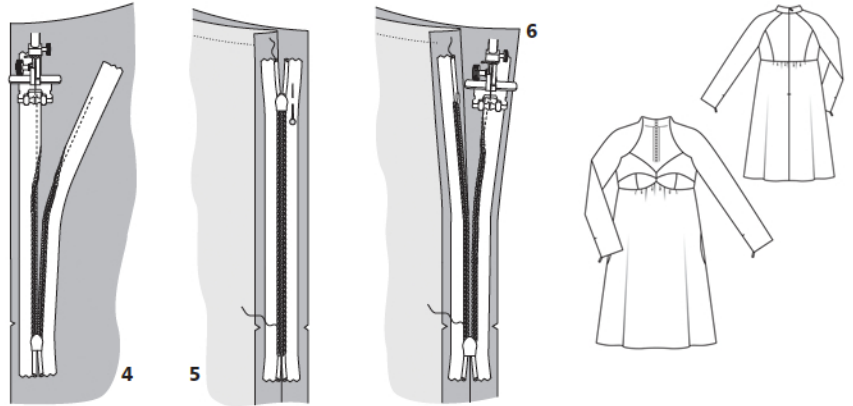
Stitch section seams on upper back pieces (seam number 4). Gather lower back pieces between asterisks. Stitch upper back to lower back units. Press seam allowances up.

Stitch side seams, not stitching across pocket openings. Inseam pockets: Pin pocket pieces right sides together with seam allowances of pocket opening edges – pocket lining pieces in front and pocket pieces of main fabric in back. Stitch pocket pieces of main fabric in place, directly along marked seam line. Stitch pocket lining pieces to seam allowances, 7 mm (1/4 in) from seam lines. Press pocket pieces forward, trim even, and stitch together.

Sew invisible zips to slit edges of sleeves.

Invisible zip:

Open the zip and push the coil back with your thumbnail to reveal the seam marking between the tape and the coil. Place the open zip face down on the right fabric side of one slit edge. Place edge of zip tape 5 mm (3/16 in) from edge of seam allowance edge (= width of seam allowance minus 1 cm (3/8 in) tape width). Pin top end of zip tape to edge of seam allowance so that teeth of zip begin at marked neck edge. The bottom end of the zip will extend past the marked end of the slit. Place the presser foot on the zip so that the coil is in the notch to the



right of the needle (image 4). Stitch zip in place from the top to the marked end of the slit. Close zip. Place the other zip tape face down on the other slit edge and pin upper end in place with a straight pin (image 5). Open zip again. Place the presser foot on the top end of the zip so that the coil is in the notch to the left of the needle. Sew the zip in place, from the top to the end of the slit (image 6). Close the zip. Zips should open from bottom to top and teeth of zip should begin at marked hem line. Stitch lower sleeve seams, from upper edge to zip.

Stitch sleeves to front bust units from seam number 10 to seam mark at corner. Clip allowances of sleeves into corners. Stitch sleeves to front armhole edges, from corner, then continue seam, to stitch sleeve backs to back.

Stitch upper sleeve seams (seam number 11), beginning exactly at marked neck edge. Clip seam allowance of sleeve fronts into corners, angled to upper end of seams. Press allowances of sleeve seams open. Stitch integrated collar of sleeve fronts to back neck edge. Press seam allowances onto collar.

Sew invisible zip to back edges, beginning at upper collar edge. Stitch centre back seam from lower edge to zip.

Pin facings right sides together with side neck edges and collar edges, turning allowances of sleeve attachment seams down again to do so. At zip slit, turn facings back, approx. 5 mm (3/16 in) before slit edges, and pin to upper edge. At slit edges of dress, turn allowances to outside and pin to collar edges, over facing. Stitch along collar edges and neck edges, up to seam mark. Turn slit allowances to inside. Turn facings up and stitch to seam allowances, as far as possible, close to seam. Turn facings to inside, turn edges under, and sew to zip tapes and to back collar attachment seams. Sew front facing ends to sleeve attachment seams.

Press hem allowances on dress and sleeves, to inside and sew in place by hand.