

138A Tunic

Sizes 44, 46, 48, 50, 52

Back length approx. 80 cm (31 1/2 ins)

Materials

Chiffon,
width: 135 cm (53 ins)
length: 1.80 – 1.80 – 1.80 – 2.60 – 2.60 m
(2 – 2 – 2 – 2 7/8 – 2 7/8 yds).

Crêpe satin, for lining
width: 135 cm (53 ins) (without sleeves)
length: 1.80 – 1.80 – 1.80 – 1.85 – 1.85 m
(2 – 2 – 2 – 2 1/8 – 2 1/8 yds).

Interfacing.

2 small buttons.

Recommended fabrics: Lightweight, sheer fabrics, backed with fine, softly draping fabrics.

Preparations

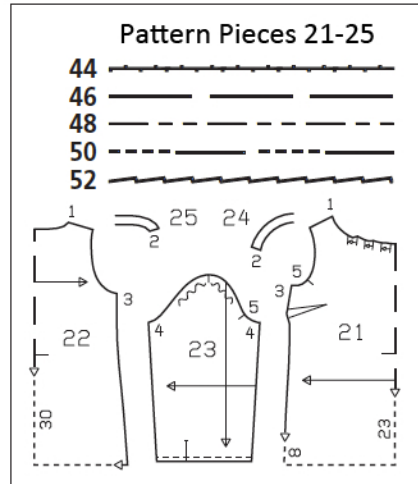
Print the pattern out on letter or A4 sized paper. It is very important to not scale or fit any of the pages, you must print the document in actual size. Your pattern will print on multiple pages, which you will then tile together. Arrange the sheets on a large, hard and flat surface matching up the numbers and letters (i.e. 6A to 6A). Cut or fold one of the sides and match the edge to it's corresponding side. Then, tape down in place so paper is secure.

Trace the pattern pieces from the pattern sheet following the lines and markings for the correct size and the correct style (138A). This pattern also includes pattern pieces, lines and markings for style 138B that should be ignored.

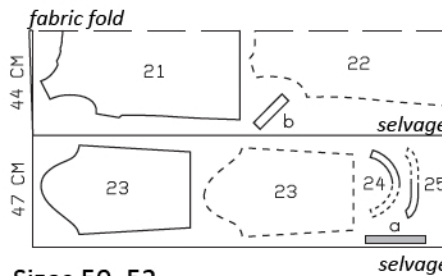
The pleat arrows on piece 21 are marked for size 44. For the other sizes, remark the pleat arrows accordingly.

burda style magazine patterns do not have seam allowance included.

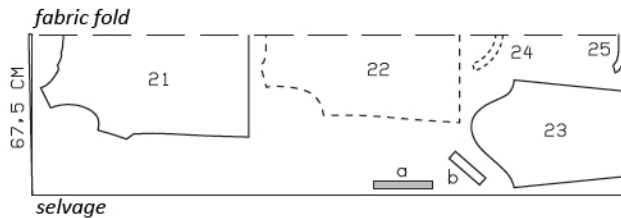
Seam and hem allowance to be added:
Seams and edges 1.5 cm (5/8 in), hem and sleeve hems 4 cm (1 5/8 ins), lining 1.5 cm (5/8 in).



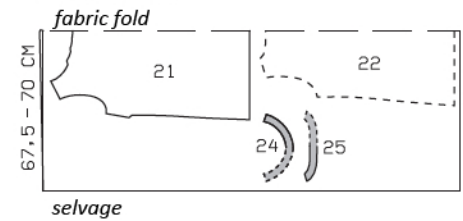
Chiffon, 135cm wide
Sizes 44-48



Sizes 50, 52



Crêpe Satin (lining), 135cm wide
Sizes 44-52



Right side faces in on a double layer of fabric; right side faces up on a single layer of fabric. Cut right and left sleeves as opposites.

Cutting Out

Chiffon:

- 21 front, on a fold 1x
- 22 back, on a fold 1x
- 23 sleeve 2x
- 24 front neck facing, on a fold 1x
- 25 back neck facing, on a fold 1x

Draft the following pieces NOT included in the pattern:

- a) 2 sleeve bands, 22 – 22.5 – 23 – 23.5 – 24 cm (8 3/4 – 9 – 9 1/8 – 9 1/4 – 9 1/2 ins) long, 2 cm (3/4 in) wide, finished width 1 cm (3/8 in),
- b) 2 bias binding strips for sleeve vents, 17 cm (6 3/4 ins) long, 3 cm (1 1/4 ins) wide (incl. allowances).

Crêpe satin (lining):
pieces 21, 22, 24, and 25.

Interfacing: See shaded areas on pattern layout.

Sewing

Stitch bust darts in front pieces of main fabric and lining. Press darts down. Stitch side seams and shoulder seams on pieces of main fabric and lining. Trim seam allowances to 7 mm (1/4 in) wide, neaten edges together, and press allowances toward back.

Lay front and back pieces of chiffon on corresponding lining pieces with wrong side facing right side. Baste together along neck and armhole edges. Lay pleats in front neck edge in direction of arrows and baste.

Neck edge: Baste chiffon facing pieces to lining pieces, with wrong side facing right side. Treat these pieces as one layer of fabric from now on. Stitch shoulder seams on facing. Stitch facing to neck edge, right sides together. Trim seam allowances. Turn facing up and stitch to seam allowances, close to seam. Turn facing to inside. Press edge. Sew facing to shoulder seams.

Slash sleeve vents as marked. Spread cut edges open to a straight line and stitch to one long edge of binding strip, as narrowly as possible. Press binding strip over attachment seam into vent, then fold to a width of 1 cm (3/8 in), turn edge under, and sew to attachment seam. On inside at top of vent, stitch diagonally across binding. On front vent edges, turn binding to inside and baste to lower edge. Finished binding width = 7 mm (1/4 in).

Stitch sleeve seams. Trim seam allowances, neaten edges together, and press to one side. Gather lower sleeve edges to match sleeve bands.

Stitch sleeve bands to lower sleeve edges. Press seam allowances of attachment seam and of other long cuff edge onto cuffs. Fold sleevebands lengthwise, right side facing in, and stitch across ends. Turn sleevebands right side out. Baste inside edges in place. Topstitch sleeve bands close to attachment seams.



Set in sleeves, easing sleeve caps.

Finish hem edge with closely spaced zigzag stitching: Press hem allowance to wrong side. Work from right side to stitch along fold edge with short, closely spaced zigzag stitches. Carefully trim allowance close to stitching. Finish hem edge of lining with closely spaced zigzag stitches.