

### 139A Trousers

**Sizes 44, 46, 48, 50, 52**

Side length 113 cm (441/2 ins)

Waistband attachment seam = waist

Hem circumference approx. 63 cm (25 ins)

### Materials

Herringbone tweed,  
width: 140 cm (55 ins)  
length: 2.30 – 2.30 – 2.50 – 2.50 – 2.50 m  
(2 5/8 – 2 5/8 – 2 3/4 – 2 3/4 – 2 3/4 yds).

A piece of lining for the pockets, approx. 45 x 30 cm  
(18 x 12 ins).

Interfacing.

Elastic,  
width: 2.5 cm (1 in)  
length: 0.20 m (1/4 yd).

1 zipper, 18 – 18 – 18 – 18 – 20 cm (7 – 7 – 7 – 7 – 8 ins) long.

1 no-sew trouser hook and bar fastener and 1 flat inside button.

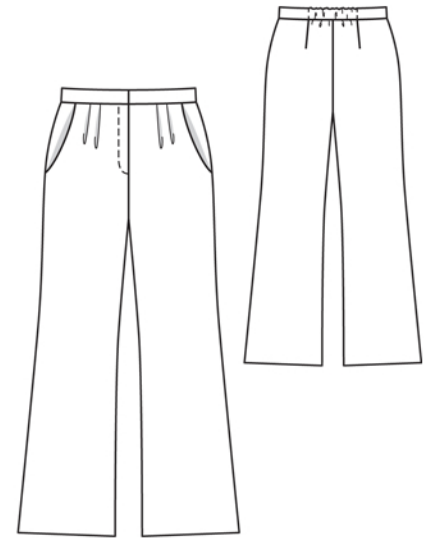
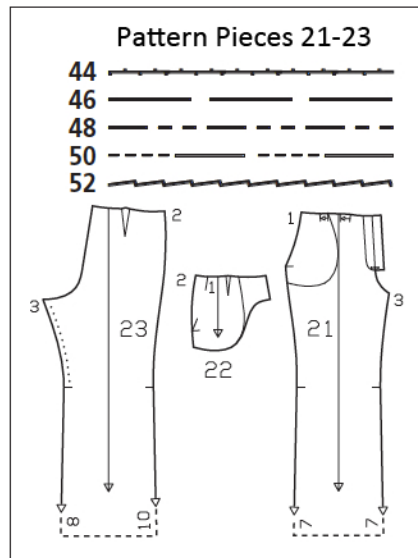
Recommended fabrics: Trousers fabrics of wools or blends.

### Preparations

Print the pattern out on letter or A4 sized paper. It is **very** important to not scale or fit any of the pages, you must print the document in **actual size**. Your pattern will print on multiple pages, which you will then tile together. Arrange the sheets on a large, hard and flat surface matching up the numbers and letters (i.e. 6A to 6A). Cut or fold one of the sides and match the edge to it's corresponding side. Then, tape down in place so paper is secure.

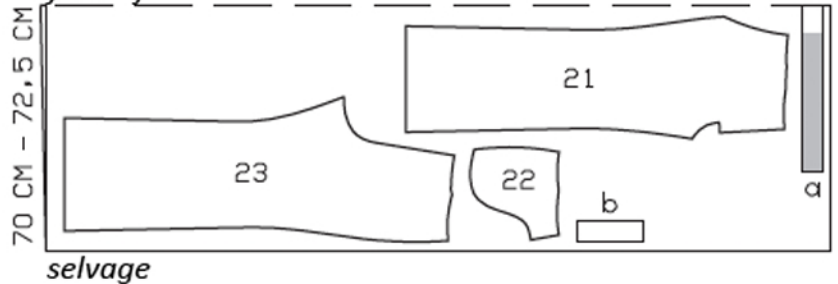
Trace the pattern pieces from the pattern sheet following the lines and markings for your size.

Trace the pocket piece from piece 21 as a separate pattern piece. The stitching line at the zip slit is marked for size 44. For sizes 46 – 52, mark the stitching line the same distance from centre front as for size 44, noting length of opening.

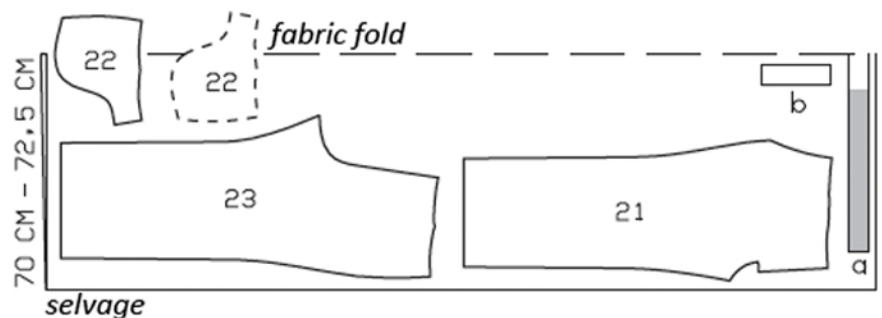


### Sizes 44, 46

*fabric fold*



### Sizes 48-52



Cut from a double layer of fabric, right side facing in. The pieces shown extending over the fabric fold should be cut last from a single layer of fabric. Cut right and left pieces as opposites.

burda style magazine patterns do not have seam allowance included.

Seam and hem allowance to be added:  
Seams and edges 1.5 cm (5/8 in), hem 4 cm (1 5/8 ins).

## Cutting Out

- 21 front trouser piece 2x
- 22 side hip yoke with integrated pocket piece 2x
- 23 back trouser piece 2x

Draft the following pieces NOT included in the pattern:

a) waistband, with 7 cm (3 in) underlap, 95 – 99 – 105 – 111 – 117 cm (37 1/2 – 39 – 41 1/2 – 43 3/4 – 46 ins) long, 6 cm (2 1/2 ins) wide, finished width 3 cm (1 1/4 ins),

b) left underlap piece, 19 – 19 – 19 – 19 – 20 cm (7 1/2 – 7 1/2 – 7 1/2 – 7 1/2 – 8 ins) long, 6 cm (2 1/2 ins) wide, finished width 3 cm (1 1/4 ins).

Lining: pocket piece (piece 21) 2x.

Interfacing: Iron 35.5 – 37 – 39.5 – 41 – 43 cm (14 – 14 1/2 – 15 5/8 – 16 1/4 – 17 ins) long to right waistband end and 42.5 – 44 – 46.5 – 48 – 50 cm (16 5/8 – 17 1/4 – 18 1/4 – 19 – 19 3/4 ins) long to left waistband end.

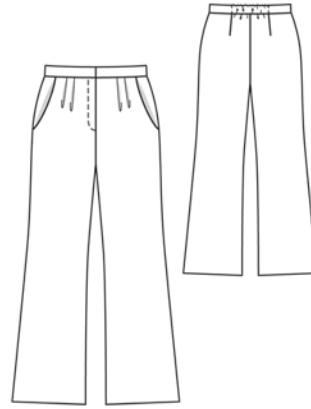
## Sewing

Stretch seam edges: Lay back trouser pieces right sides together. Press inside leg edges above seam mark with a steam iron or under a damp cloth to stretch them until they match corresponding edge of front trouser piece.

Stitch darts. Press darts toward centre. Lay pleats in front trouser pieces in direction of arrows and baste.

Hip yoke pockets: Stitch pocket pieces right sides together with pocket opening edges of front trouser pieces. Turn pocket pieces up and stitch to seam allowances, close to seams. Turn pocket pieces to inside. Pin pocket opening edges to side hip yokes at placement lines. Stitch edges of pocket pieces together. Baste pockets to wrong side of front trouser pieces, first trimming away allowance of right pocket along marked centre front.

Stitch side seams and inside leg seams. Press seam allowances open. Stitch centre front seam from slit mark to inside leg seam.



Zip slit: Press self-facings on slit edges to inside and stitch in place, stitching along centre front on right edge and 5 mm (3/16 in) before centre front on left edge. Stitch zip to wrong side of left slit edge (underlap), stitching close to teeth of zip. Pin slit closed, matching centre fronts. Stitch loose zip tape to right facing, not catching trouser piece. Baste facing in place. Topstitch slit as marked, from upper edge to 3 cm (1 1/4 ins) above slit end. Fold underlap piece lengthwise and stitch across bottom end. Turn right side out. Lay underlap under left slit edge and pin to facing. Stitch facing to underlap, close to zip attachment seam. Lay slit closed again and topstitch to the end, catching underlap.

Stitch centre back seam. Press seam open from upper edge to beginning of crotch curve. Do not press allowances flat along crotch curve.

Fold waistband in half lengthwise, wrong side facing in. Press upper waistband edge. Unfold waistband again. Stitch waistband to upper trousers edge, stitching waistband underlap to opening underlap and leaving remainder extending. Press allowances of attachment seam toward waistband. Attach trousers hook to inside waistband half, 1 cm (3/8 in) from right front end. Fold waistband right side facing in and stitch across right front waistband end. On left end, turn allowances of underlap down again and stitch along lower underlap edge and left waistband end. Turn waistband right side out. At front, turn inside waistband edge under, approx. 4 cm (15/8 ins) long, and baste in place. Then lay remaining edge flat over attachment seam. For the elastic casing, pin back inside waistband edge to attachment seam, from dart to dart. Work from right side of trousers to stitch along seam. Pull elastic into back waistband. Stitch ends of elastic in place above darts for a finished width of 16 cm (63/8 ins). Stitch remaining inside waistband edge in place. Attach bar of fastener to waistband, to match hook. Work a buttonhole in left waistband end.

Press hem allowances to inside and sew in place by hand.