

109 Dress

Sizes 36, 38, 40, 42, 44

Length from waist 58 cm (23")

3/4 sleeves, approx. 50 cm (20")

Materials

Diagonal wool jersey,
width: 145 cm (57")

length: sizes 36, 38, 40: 1.65 m (1 7/8 yds),
sizes 42, 44: 1.70 m (1 7/8 yds)

Fusible interfacing, Vilene/Pellon G 785, 90 cm (36")
wide: 0.35 m (3/8 yd)

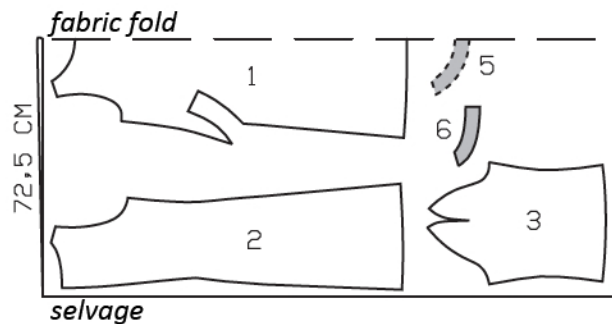
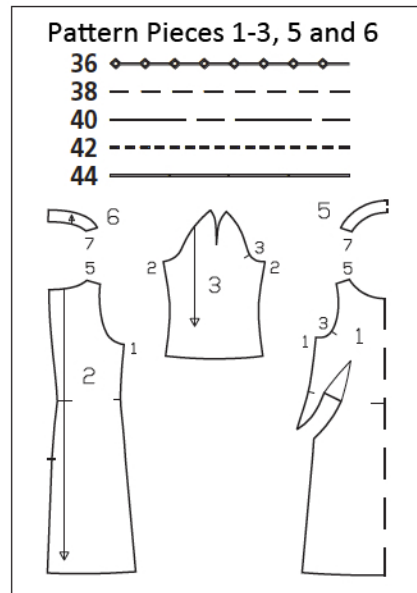
Vilene Bias Tape

1 invisible zipper, 60 cm (24") long.

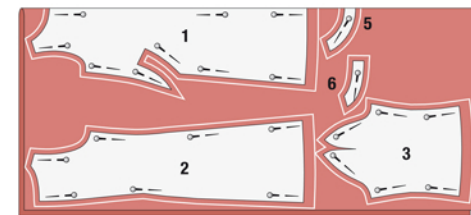
Preparations

Print the pattern out on letter or A4 sized paper. It is **very** important to not scale or fit any of the pages, you must print the document in **actual size**. Your pattern will print on multiple pages, which you will then tile together. Arrange the sheets on a large, hard and flat surface matching up the numbers and letters (i.e. 6A to 6A). Cut or fold one of the sides and match the edge to it's corresponding side. Then, tape down in place so paper is secure.

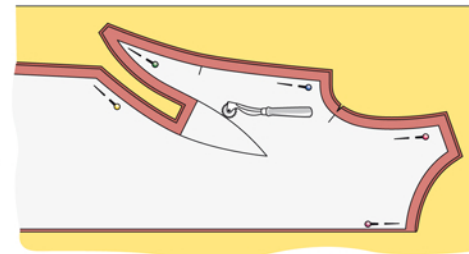
Trace the pattern pieces from the pattern sheet following the lines and markings for the correct size and the correct style (109). This pattern also includes pattern pieces, lines and markings for style 106, 107 and 108 that should be ignored.



Cut fabric pieces :
Fold fabric lengthwise, right side facing in. Lay the pattern pieces on the fabric – pieces 1 and 5 on on fabric fold, piece 5 with the printed side facing downwards. Pin pieces to fabric. Use tailor's chalk to draw seam and hem allowances along edges of pattern pieces: 4 cm (1 5/8") for hem and sleeve hem, and 1.5 cm (5/8") at all other seams and edges. Cut out fabric pieces. Also cut out pieces 5 and 6 from interfacing.

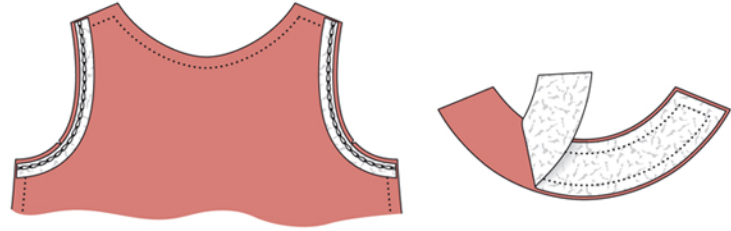


Transfer pattern markings:
Use Burda carbon paper and tracing wheel to transfer pattern outlines (seam and hem lines) and dart lines onto the wrong side of the front and back pieces, sleeves and facing pieces (see instructions with carbon paper). Mark the slit by making small clips in the edges of the seam allowances – 5 mm (3/16") long clips are sufficient.



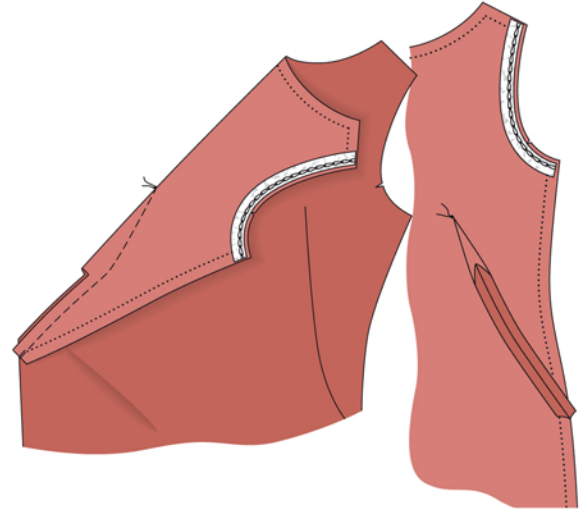
Iron interfacing in place:

Unfold the facing pieces and also the front and back pieces. Lay Vilene/Pellon G 785 on the wrong sides of the facing pieces and iron in place. Iron at the silk setting (2 dots), for approx. 8 seconds. Iron the Vilene Bias Tape/stay tape to the wrong side of armhole edges so that the chain stitch is 1.5 cm (5/8") away from the edge of the fabric. Iron at the silk setting for approx. 8 seconds.



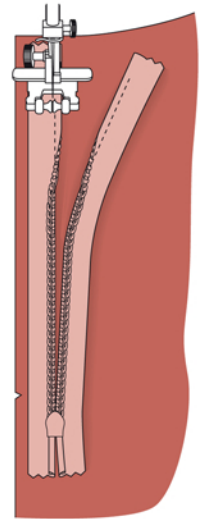
Darts:

Fold each front piece along centre of dart, right side facing in. Pin dart lines together. Stitch, starting at the lower edge. Tie-off beginning of lower seam with backstitching. Do not backstitch at the point of the dart. Instead, knot the threads here. Cut the dart allowances to 1.5 cm (5/8") in width. Iron seam allowances open, and iron the point of the dart flat.



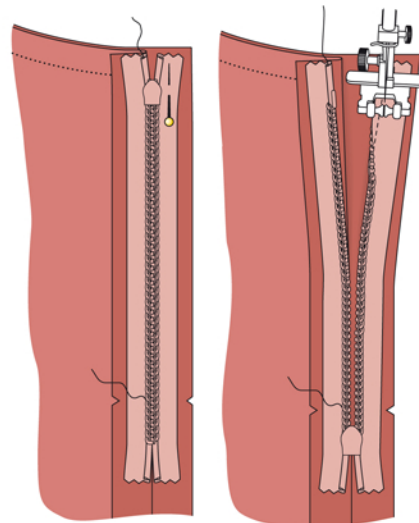
Invisible zipper, right half:

Lay the open zipper, outer side down, on the right back piece, 5 mm (3/16") from the edge of the fabric. The teeth begin at the marked line of the neck edge. Stitch the zipper in place with the special presser foot as far as the slit. The needle is to the left of the teeth.



Invisible zipper, left half:

Close the zipper. Lay the second tape of the zipper on the slit edge of the left back piece and pin in place at the top. Open the zipper again and sew as far as the slit. The needle is to the right of the teeth.



Centre back seam:

Lay the back pieces together, right sides facing. Pin the centre back seam edges together, from the bottom to close to the slit marking, turning the loose zipper end outwards. The seam lines meet. Stitch the seam. Press seam allowances open and finish edges of allowances with zigzag stitching.

Side seams:

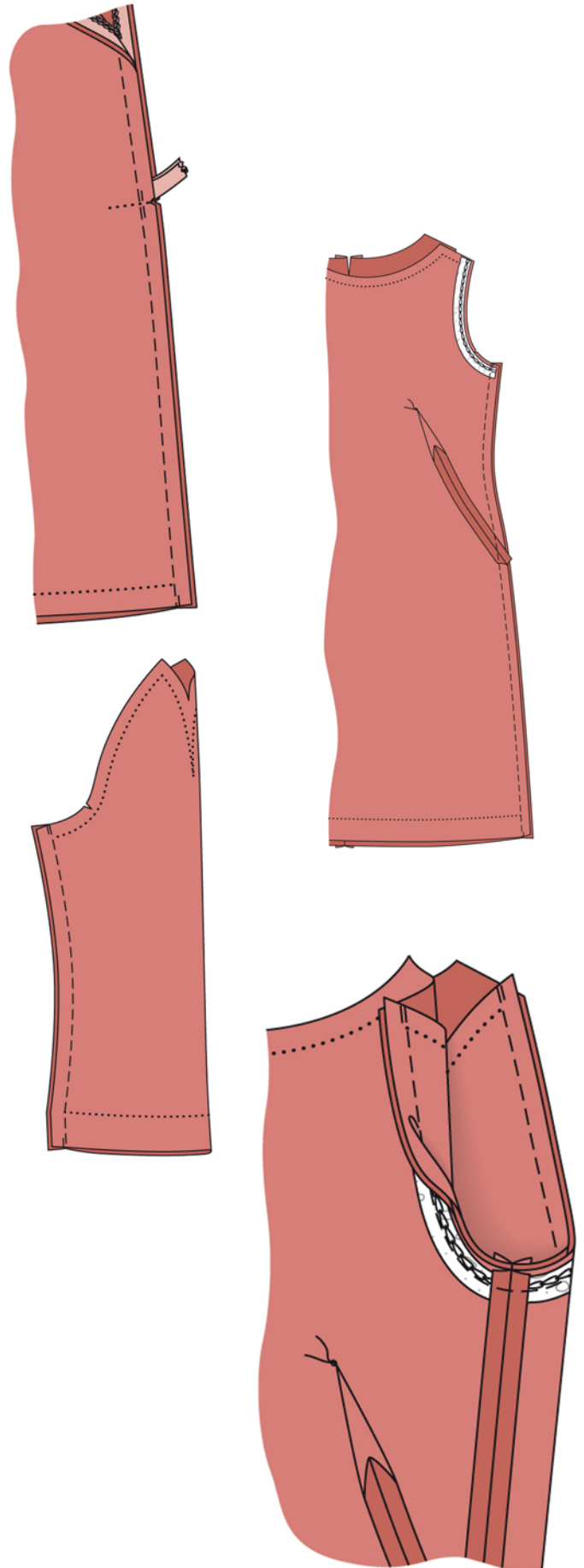
Lay the dress front on the dress back, right sides facing. Pin the side seams, matching seam lines. Stitch side seams. Tie-off beginning and end of each seam by backstitching. Then press seam allowances open and finish edges of allowances with zigzag stitching.

Sleeve seams:

Fold the sleeves lengthwise, right side facing in. Pin the sleeve seam. Stitch the seam. Tie-off beginning and end of seam by backstitching. Press seam allowances open and finish edges of allowances with zigzag stitching.

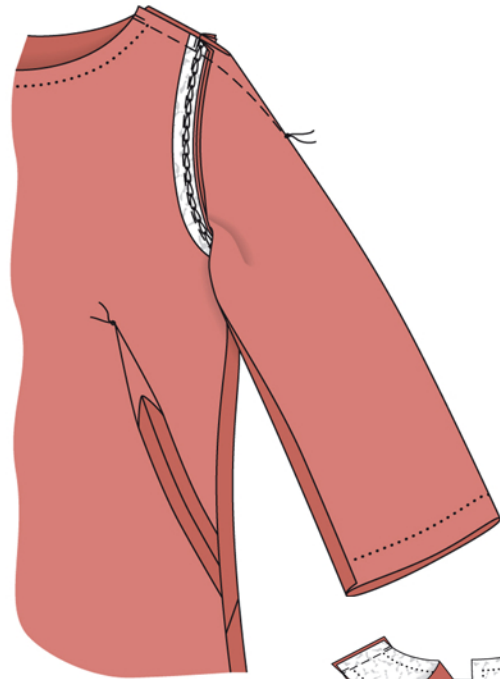
Attaching sleeves:

Pin the sleeves to the armholes, right sides facing. Sleeve seams and side seams must meet. Seam marks (3) must match and seam lines must meet. Stitch. Finish edges of seam allowances together and press allowances toward sleeves, from the top to beginning of underarm curve.



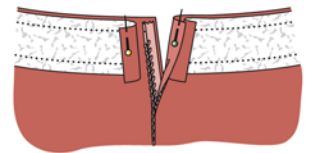
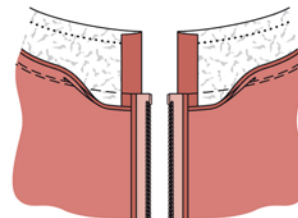
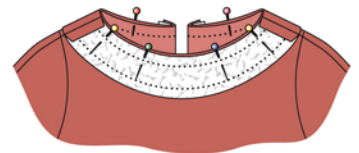
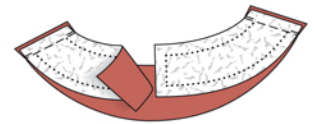
Shoulder seams, darts:

Lay front on back, right sides facing, folding sleeve lengthwise. Pin shoulder seams and pin the dart lines together. Ends of sleeve attachment seams must meet. Stitch, starting at the neck edge. Knot the threads at the point of the dart. Finish seam allowances with zigzag stitching. Press seams open, pressing points of darts flat.



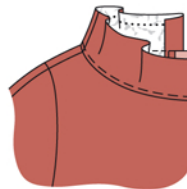
Pin neck facing in place:

Stitch the shoulder edges of the facing pieces together, right sides facing. Press seam allowances open. Finish inner edge of facing with zigzag stitching. Pin the facing to the neck edge, right sides together. Turn facing edges under, 5 mm (3/16") from the zipper. Fold the zipper, along with the slit allowances, to outside, and pin in place.



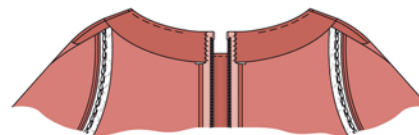
Sewing facing:

Stitch the neck edge to the facing. Trim seam allowances to 7 mm (1/4") wide and clip allowances several times. Turn the slit allowances to inside. Turn the facing up and stitch it to the seam allowances, close to the seam, as far as possible.



Finish the neck edge:

Turn the facing to the inside and press. Sew the facing to the zipper tapes and to the allowances of the shoulder seams.



Hem and sleeve hems:

Finish the lower edges of dress and sleeves with zigzag stitching. Press the hem allowances to the inside and sew them in place loosely by hand.

