

118 Blouse

Sizes 36, 38, 40, 42, 44

Back length approx. 65 cm (25 3/4 ins)

Materials

Crêpe de chine,
width: 130 cm (51 ins)
length: 2.00 – 2.00 – 2.20 – 2.20 m
(2 1/4 – 2 1/4 – 2 1/2 – 2 1/2 yds).

Interfacing.

6 fabric-covered buttons.

2 smaller fabric-covered buttons for the sleeve bands.

Recommended fabrics: Lightweight, softly draping blouse fabrics.

Preparations

Print the pattern out on letter or A4 sized paper. It is **very important** to not scale or fit any of the pages, you must print the document in **actual size**. Your pattern will print on multiple pages, which you will then tile together. Arrange the sheets on a large, hard and flat surface matching up the numbers and letters (i.e. 6A to 6A). Cut or fold one of the sides and match the edge to it's corresponding side. Then, tape down in place so paper is secure.

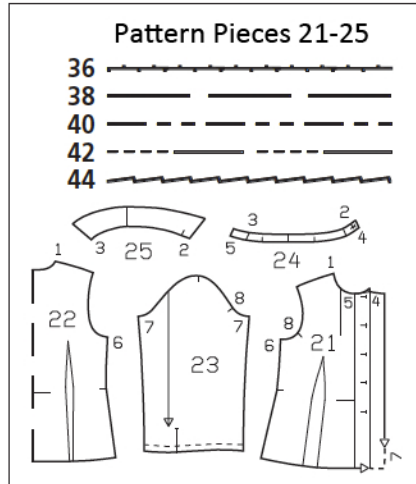
Trace the pattern pieces from the pattern sheet following the lines and markings for your size.

Note different lines for right and left front fastening edges but cut right and left pieces the same size initially, from the double layer of fabric. The buttonholes on piece 21 are marked for size 36. For sizes 38 – 44, mark the top buttonhole the same distance from neck edge as for size 36. The bottom buttonhole is the same for all sizes. Space the other buttonholes evenly in between.

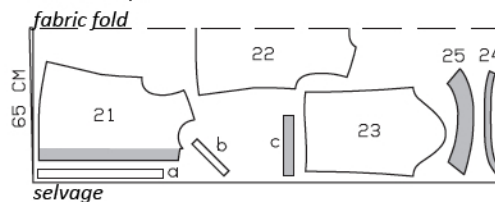
burda style magazine patterns do not have seam allowance included.

Seam and hem allowance to be added:

Seams and edges 1.5 cm (5/8 in), sleeve bands and lower sleeve edges 1 cm (3/8 in), hem 1.5 cm (5/8 in).

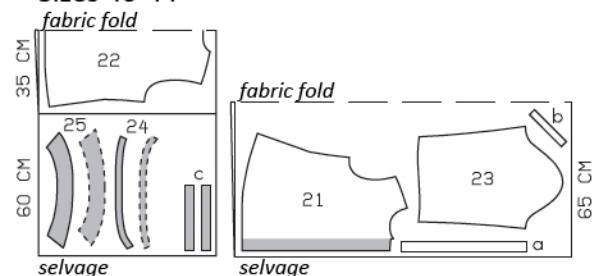


Sizes 36, 38



Fold the fabric as shown in the pattern layout. Right side faces in on a double layer of fabric; right side faces up on a single layer of fabric.

Sizes 40-44



Cutting Out

- 21 front 2x
- 22 back, on a fold 1x
- 23 sleeve 2x
- 24 collar band 2x
- 25 collar 2x

Draft the following pieces NOT included in the pattern:

- a) 2 tie bands, 53 cm (21 ins) long, 4 cm (15/8 ins) wide (incl. allowances),
- b) 2 bias binding strips for the sleeve vents, 19 cm (7 1/2 ins) long, 3 cm (1 1/4 ins) wide (incl. allowances),
- c) 2 sleeve bands, 22.5 – 23 – 23.5 – 24 – 24.5 cm (9 – 9 1/8 – 9 1/4 – 9 1/2 – 9 7/8 ins) long, 2 cm (3/4 in) wide, finished width 1 cm (3/8 in).

Important: After cutting out front pieces, trim left front to 1.5 cm (5/8 in) before marked "left edge" line.

Interfacing: See shaded area on pattern layout. Iron interfacing to front facings and to top collar piece.

Sewing

Stitch front darts. Trim dart allowances to 1 cm (3/8 in) wide, neaten edges together, and press forward. Stitch back darts. Press darts toward centre back.

Stitch side seams and shoulder seams. Trim seam allowances, neaten together, and press onto back.

Neaten inside edges of front self-facings. Press hem allowance to inside, turn in, and stitch. Press self-facings to inside. Baste to neck edge and sew to hem.

Collar with collar stand: Stitch collar pieces right sides together along outer edges. Trim seam allowances. Turn collar right side out and press. Topstitch 7 mm (1/4 in) from collar edges. Lay collar stand pieces right sides together, with collar in between. Stitch along front and upper collar stand edges, beginning and ending in front, exactly on seam line of attachment edge. Trim seam allowances. Turn collar stand right side out. Stitch outer collar stand piece to neck edge of blouse. Press seam allowances onto collar stand. Turn in inside collar stand piece and baste over attachment seam. Topstitch collar stand close to attachment seam. Topstitch collar stand close to all edges.

Slash sleeve vents as marked. Spread cut edges open to a straight line and stitch to one long edge of binding strip, as narrowly as possible. Turn binding strip over attachment seam into vent, fold to a width of 7 mm (1/4 in), turn edge under, and sew to attachment seam. On inside, stitch diagonally across binding at top of vent. On front edge of each vent, turn binding to inside and baste to lower sleeve edge.

Stitch sleeve seams. Gather lower sleeve edges.

Stitch sleeve bands to lower sleeve edges. Press seam allowances of attachment seams and of other long edges of sleeve bands onto sleeve bands. Fold sleeve bands half to outside and stitch across ends. Turn sleeve bands right side out and baste inside edges to attachment seams. Topstitch sleeve bands close to attach-



ment seams.

Set in sleeves.

Turn both ends of each tie band under. Fold bands lengthwise, right side facing in. Stitch 1 cm (3/8 in) from fold edge. Turn bands right side out and press. Lay bands on collar stand and stitch ends in place, 4 cm (1 5/8 ins) from right end of collar stand and 8 cm (3 1/4 ins) from left end. Sew open ends closed.

Work buttonholes in right front and in right end of collar band. Lay right front edge on left front, at placement line, and mark button positions. Work buttonhole in front end of each sleeve band, for the smaller buttons.