

113 Dress

Sizes 36, 38, 40, 42, 44

Length from waist 50 cm (19 3/4 ins)

Materials

Crêpe de chine,
width: 140 cm (55 ins)
length: 2.20 – 2.20 – 2.20 – 2.60 – 2.60 m
(2 1/2 – 2 1/2 – 2 1/2 – 2 7/8 – 2 7/8 yds).

Interfacing.

8 small buttons.

Recommended fabrics: Lightweight dress fabrics.

Preparations

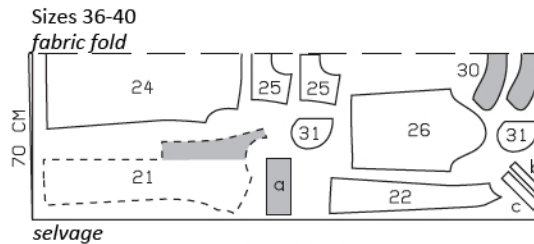
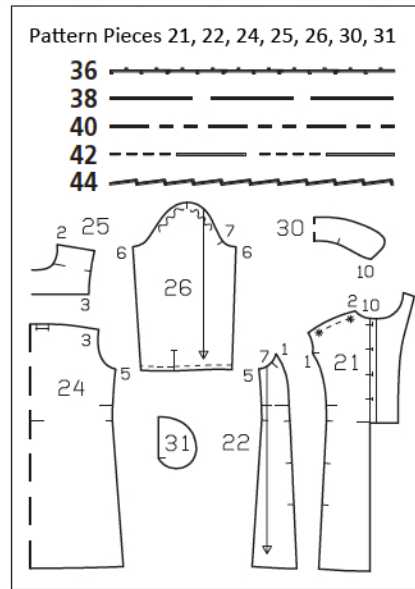
Print the pattern out on letter or A4 sized paper. It is very important to not scale or fit any of the pages, you must print the document in actual size. Your pattern will print on multiple pages, which you will then tile together. Arrange the sheets on a large, hard and flat surface matching up the numbers and letters (i.e. 6A to 6A). Cut or fold one of the sides and match the edge to it's corresponding side. Then, tape down in place so paper is secure.

Trace the pattern pieces from the pattern sheet following the lines and markings for the correct size and the correct style (113). This pattern also includes pattern pieces, lines and markings for style 111, 112 and 114 that should be ignored.

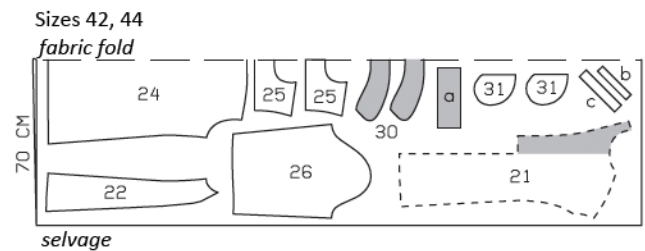
The buttonholes on piece 21 are marked for size 36. For sizes 38 – 44, mark the top buttonhole the same distance from neck edge as for size 36. The bottom buttonhole is the same for all sizes. Space the other buttonholes evenly in between.

burda style magazine patterns do not have seam allowance included.

Seam and hem allowance to be added:
Seams and edges 1.5 cm (5/8 in), hem 4 cm (1 5/8 ins).



Cut from a double layer of fabric, right side facing in. Match stripes at stripe marks.



Cutting Out

- 21 centre front 2x
- 22 side front 2x
- 24 back, on a fold 1x
- 25 yoke, on a fold 2x
- 26 sleeve 2x
- 30 collar, on a fold 2x
- 31 pocket piece 4x

Draft the following pieces NOT included in the pattern:

- a) 2 cuffs with 2 cm (3/4 in) underlap, 23.5 – 24 – 24.5 – 25 – 25.5 cm (9 1/4 – 9 1/2 – 9 3/4 – 9 7/8 – 10 ins) long, 10 cm (4 ins) wide, finished width 5 cm (2 ins),
- b) 2 bias binding strips for sleeve vents, 17 cm (6 3/4 ins) long, 3 cm (1 1/4 ins) wide (incl. allowances),
- c) facing strip for back neck edge, 19 – 20 – 20 – 21 – 21 cm (7 1/2 – 8 – 8 – 8 3/8 – 8 3/8 ins) long, 4 cm (1 5/8 ins) wide (incl. allowances).

Interfacing: See shaded area on pattern layout.

Sewing

Stitch side fronts to centre fronts, not stitching across pocket openings.

Inseam pockets: Pin pocket pieces right sides together with seam allowances of pocket opening edges and stitch in place, directly along marked seam lines. Press pocket pieces forward and stitch together. Press allowances of section seams onto centre fronts.

Gather upper front edges between asterisks. Lay pleats in upper back edge in direction of arrows and baste.

Yoke: Pin yoke pieces to upper edge of back, pinning one yoke to outside and one to inside. Stitch yokes in place. Press yokes up. Stitch outer yoke right sides together with upper front edges. Turn under edges of inside yoke and sew to attachment seams. Baste yokes together along neck and armhole edges, not turning edges under. Topstitch yoke close to attachment seams.

Lay collar pieces together, right sides facing. Stitch along outer edges. Trim seam allowances. Turn collar right side out and press. Baste collar edges together to neck edge, from centre front to centre front (seam number 10).

Turn front self-facings to outside and pin to neck edge, over collar. Fold facing strip for back neck edge lengthwise, with right side facing out, and press. Pin folded facing strip to neck edge, over collar, with fold edge of strip on garment piece, 1 cm (3/8 in) past seam line. Ends of facing strip lie on front facings. Stitch along marked neck edge. On right lower narrow edge of fastening, stitch from fold to centre front. Trim seam allowances of neck edge. Trim seam allowances of right lower fastening edge and clip allowance of right front diagonally into corner. Turn facings to inside and press edges. Sew facings to inside yoke. Stitch back facing strip in place, 7 mm (1/4 in) from seam.

On left fastening edge, baste lower facing edge in place. Stitch centre front seam. Press seam allowances onto right front.



Stitch side seams. Press hem allowance to inside and sew in place by hand.

Slash sleeve vents as marked. Spread cut edges open to a straight line and stitch to one long edge of binding strip, as narrowly as possible. Turn binding strip over attachment seam into vent, fold to a width of 7 mm (1/4 in), turn edge under, and sew to attachment seam. On inside, stitch diagonally across binding at top of vent. On front edge of each vent, turn binding to inside and baste to lower sleeve edge.

Stitch sleeve seams. Gather lower sleeve edges to match cuffs.

Stitch cuffs to lower sleeve edges. Press seam allowances of attachment seams and of other long cuff edges onto cuffs. Fold cuffs lengthwise, right side facing in. Stitch across ends. Turn right side out. Baste inside edges in place. Topstitch cuffs close to attachment seams.

Set in sleeves, easing sleeve caps.

Work buttonholes in right front as marked. Work 2 buttonholes in front edge of each cuff.