

105 Jumper

Sizes 34, 36, 38, 40, 42

Length from waist 48 cm (19 ins)

Materials

Wool jersey diagonal,
width: 145 cm (57 ins)
length: 1.20 m (1 3/8 yds) for all sizes.

Stretch lining,
width: 140 cm (55 ins)
length: 0.70 m (7/8 yd).

Vilene Bias Tape/ stay tape.

Recommended fabrics: Jersey with body.

Preparations

Print the pattern out on letter or A4 sized paper. It is **very important** to not scale or fit any of the pages, you must print the document in **actual size**. Your pattern will print on multiple pages, which you will then tile together. Arrange the sheets on a large, hard and flat surface matching up the numbers and letters (i.e. 6A to 6A). Cut or fold one of the sides and match the edge to it's corresponding side. Then, tape down in place so paper is secure.

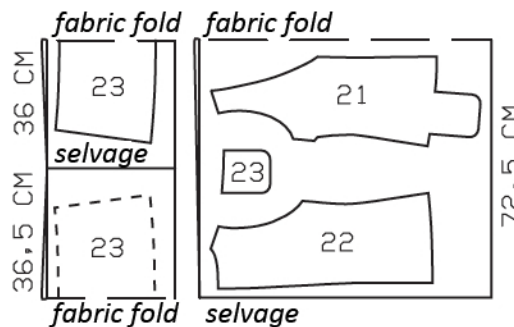
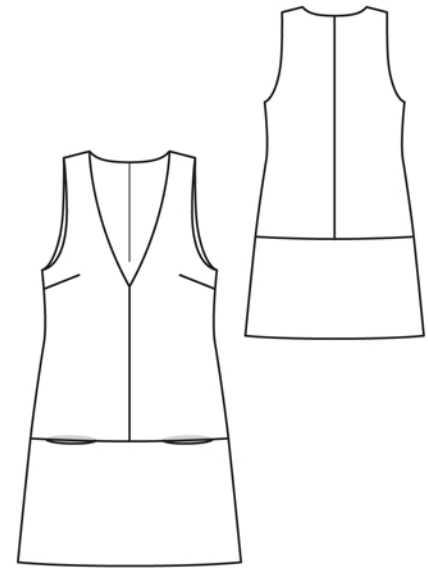
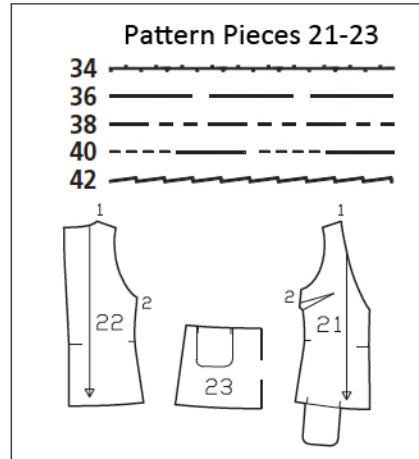
Trace the pattern pieces from the pattern sheet following the lines and markings for your size.

Trace the pocket piece from piece 23 as a separate pattern piece.

burda style magazine patterns do not have seam allowance included.

Seam and hem allowance to be added:

Seams and edges 1.5 cm (5/8 in), hem 4 cm (1 5/8 ins).



Fold the fabric as shown in the pattern layout. Right side faces in on a double layer of fabric; right side faces up on a single layer of fabric.

Cutting Out

Jersey:

- 21 upper front with integrated pocket piece 2x
- 22 upper back 2x
- 23 lower front, on a fold 1x
- pocket piece 2x
- 23 lower back, on a fold 1x

Lining: piece 21 without pocket piece, piece 22.

Vilene Bias Tape/ stay tape: Iron to wrong side of neck and armhole edges of lining pieces. Also iron to wrong side pocket opening edges on lower front.

Sewing

On upper front, stitch centre seam, beginning on upper edge, exactly at marked neck edge. Press seam open. Stitch bust darts. Press darts down. Stitch centre seam on upper back.

Stitch darts and centre seams on lining as for pieces of main fabric.

Neck and armhole edges, shoulder seams: Pin lining pieces right sides together with front and back. Stitch along neck and armhole edges, beginning and ending stitching 2 cm (3/8 in) below each shoulder seam line. Trim seam allowances. Clip curves close to stitching. Turn lining of front (not back) to inside. Slide the front shoulder edges through the still-unturned back shoulder edges, right fabric sides of front and back and of lining lie facing. Stitch shoulder seams of dress and lining. Pull the front, which is lying inside, and the lining up and out slightly to press seam allowances open. This will be easier if you slip the handle of a wooden spoon under each seam. Then stitch closed those edges which have remained open. Pull front down out of back shoulder edges and the back lining will turn itself to the inside. At neck and armhole edges, stitch lining to seam allowances, close to seams, as far as possible. Press edges.

Front horizontal seam and pockets: Pin pocket pieces to pocket opening edges of lower front, right sides facing. Stitch to seam allowance 1 mm (1/16 in) from seam line. Press pocket pieces up and stitch to seam allowances, close to attachment seams. Stitch lower front to upper front, not stitching across pocket openings. Clip seam allowance of lower front next to pocket pieces. Press pocket pieces down. Press seam allowances up. Stitch pocket pieces together.

Stitch lower back to upper back. Press seam allowances up. At armholes, turn lining up again. Stitch side seams of main fabric and lining as continuous seams. Turn lining down again. Turn lower lining edge under and sew to horizontal seam. Press hem allowance to inside and sew in place by hand.

