

### 102 Coat

Sizes 36, 38, 40, 42, 44

Back length approx. 90 cm (35 1/2 ins)

### Materials

Wool jersey diagonal,  
width: 145 cm (57 ins)  
length: 2.20 – 2.25 – 2.25 – 2.55 – 2.55 m  
(2 1/2 – 2 5/8 – 2 5/8 – 2 7/8 – 2 7/8 yds).

Lining,  
width: 140 cm (55 ins)  
length: 1.50 – 1.50 – 1.70 – 1.70 – 1.70 m  
(1 3/4 – 1 3/4 – 1 7/8 – 1 7/8 – 1 7/8 yds).

Interfacing.

Vilene Bias Tape/ stay tape.

6 buttons. 2 flat inside buttons.

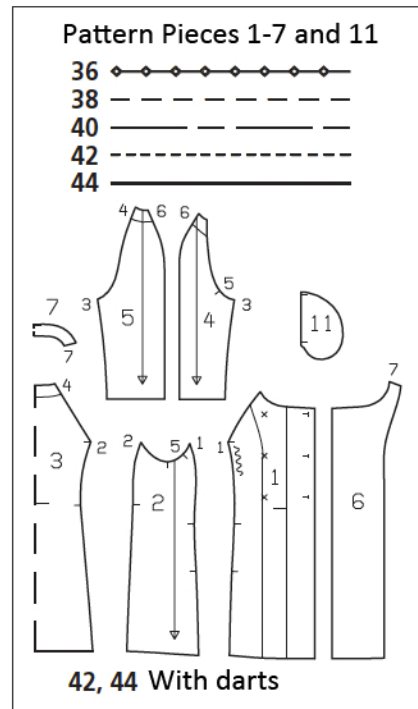
Recommended fabrics: Coat fabrics of wool or blends.

### Preparations

Print the pattern out on letter or A4 sized paper. It is **very important** to not scale or fit any of the pages, you must print the document in **actual size**. Your pattern will print on multiple pages, which you will then tile together. Arrange the sheets on a large, hard and flat surface matching up the numbers and letters (i.e. 6A to 6A). Cut or fold one of the sides and match the edge to it's corresponding side. Then, tape down in place so paper is secure.

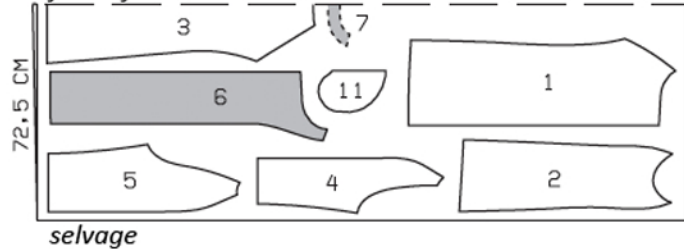
Trace the pattern pieces from the pattern sheet following the lines and markings for the correct size and the correct style (102). This pattern also includes pattern pieces, lines and markings for style 101 and 103 that should be ignored.

The buttonholes and button markings on piece 1 are for size 36. For sizes 38 – 44, mark the top buttonhole the same distance from neck edge as for size 36. The bottom buttonhole is the same for all sizes. Mark the 3rd buttonhole exactly half way between upper and lower buttonholes. Move button markings accordingly.



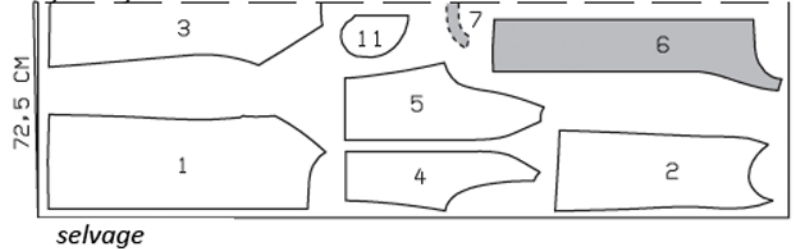
### Sizes 36-40

*fabric fold*



### Sizes 42, 44

*fabric fold*



burda style magazine patterns do not have seam allowance included.

Seam and hem allowance to be added:

Seams and edges 1.5 cm (5/8 in), hem and sleeve hems 4 cm (1 5/8 ins), lining 1.5 cm (5/8 in).

### Cutting Out Continued...

#### Wool fabric:

- 1 front 2x
- 2 side piece 2x
- 3 back, on a fold 1x
- 4 sleeve front 2x
- 5 sleeve back 2x
- 6 front facing 2x
- 7 back facing, on a fold 1x
- 11 pocket piece 2x

Lining: pieces 1, 4, and 5 to lining line; piece 3 to lining line and with an ease pleat of approx. 2 cm (3/4 in) at centre back; pieces 2 and 11.

Interfacing: See shaded area on pattern layout. Iron Vilene Bias Tape/ stay tape to wrong side of armhole edges. Also interface hem allowances.

### Sewing

For sizes 36, 38 and 40, ease section seam edges of fronts, from • to •. For sizes 42 and 44, stitch bust darts in fronts. Press darts down.

#### Inseam pockets, front section seams:

Pin pocket pieces of coat fabric right sides together with pocket opening edges of side pieces and pin pocket lining pieces to pocket opening edges of fronts, matching seam marks. Stitch pocket pieces of coat fabric to seam allowances, 2 mm (a scant 1/8 in) from marked seam lines and stitch pocket lining pieces in place, 7 mm (1/4 in) from marked seam lines. Press pocket pieces over attachment seams. Lay side pieces on front pieces, right sides facing. Pin section seams, matching seam marks and seam lines. For sizes 36, 38 and 40, first pin upper seam ends together and then pin seam edges together, from lower edge to lower ease points. Hold bobbin threads and slide the fabric of the fronts together along the threads until they match the side pieces. Knot ends of threads. Distribute eased fullness evenly. Pin remainder of section seam.

Sizes 36 bis 44: Stitch section seams, not stitching across pocket openings, between seam marks. Press seam allowances open and press pocket opening edges of fronts. Lay fabric pocket pieces toward fronts. Pin pocket pieces together, trim even, and stitch together.



Stitch upper sleeve seams and lower sleeve seams. Press sleeve hem allowances to inside and sew in place by hand. Stitch sleeves to armhole edges. Press seam allowances open, from neck edge to section seams. Do not press seam allowances flat at lower ends of seams.

Stitch shoulder seams of facing. Pin facing right sides together with coat. Stitch along front and neck edge. Trim seam allowances, trimming corners diagonally. Turn facings forward and up and stitch to seam allowances, as far as possible close to seams. Turn facing to inside and press edges.

At hem edge, unfold facing. Press hem allowance to inside then turn down again.

Construct lining: On lining back, stitch ease pleat at top and bottom, each approx. 5 cm (2 ins) long, and baste in between. Press pleat to one side. Stitch seams of lining. Stitch sleeve linings to armhole edges.

Sew lining in place, hem coat: Stitch lining right sides together with inside facing edge. Press seam allowances onto lining. Lay lining inside coat, with wrong sides facing, pulling linings into sleeves. Turn hem allowance to inside and sew in place by hand. Turn facing to inside again. Turn lining edge under, along hem edge. Press fold edge lightly, and push upward in a shallow curve, and pin to hem allowance. Sew facings and lining in place. Lay extra length of lining down and press lightly. Above each sleeve lining hem, pin a fold, approx. 1 cm (3/8 in) deep. Turn edge of sleeve lining under and sew to hem allowance. Lay extra length of lining down and press.

Work buttonholes in right front. For inside buttons, work top and bottom buttonholes in left front. Sew buttons in place, to match buttonholes and as marked. Sew flat inside buttons to right front facing on inside of coat.