

### 106B Top

Sizes 36, 38, 40, 42, 44

Length from waist 23 cm (9 1/8 ins)

3/4-sleeves, 12 cm (4 3/4 ins) shorter than normal

### Materials

Ponte jersey,  
width: 160 cm (63 ins)  
length: 1.25 – 1.25 – 1.25 – 1.25 – 1.40 m  
(1 1/2 – 1 1/2 – 1 1/2 – 1 1/2 – 1 5/8 yds).

### Batting

Interfacing, 90 cm (36 ins) wide: 0.10 m (1/8 yd).

Vilene Bias Tape/ stay tape.

Recommended fabrics: Jersey with body, wools or blends.

### Preparations

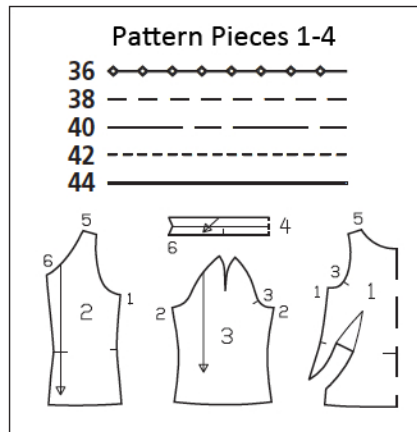
Print the pattern out on letter or A4 sized paper. It is very important to not scale or fit any of the pages, you must print the document in actual size. Your pattern will print on multiple pages, which you will then tile together. Arrange the sheets on a large, hard and flat surface matching up the numbers and letters (i.e. 6A to 6A). Cut or fold one of the sides and match the edge to it's corresponding side. Then, tape down in place so paper is secure.

Trace the pattern pieces from the pattern sheet following the lines and markings for the correct size and the correct style (106B). This pattern also includes pattern pieces, lines and markings for style 107, 108 & 109 that should be ignored.

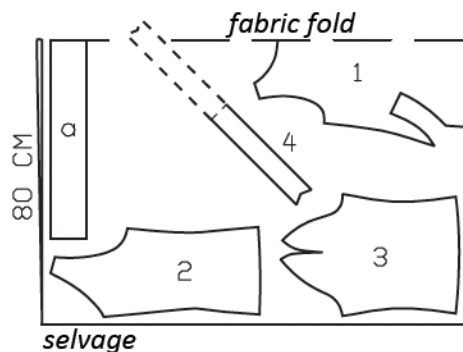
**burda style magazine patterns do not have seam allowance included.**

To be added:

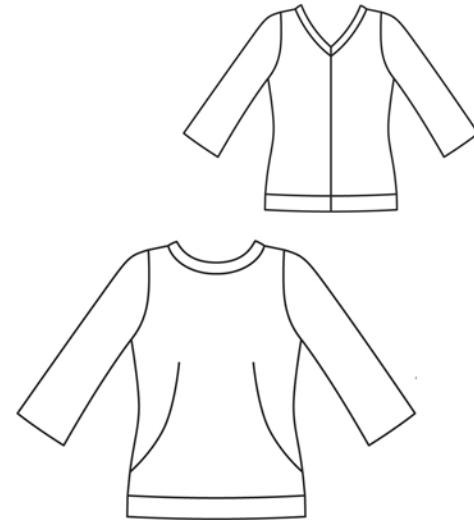
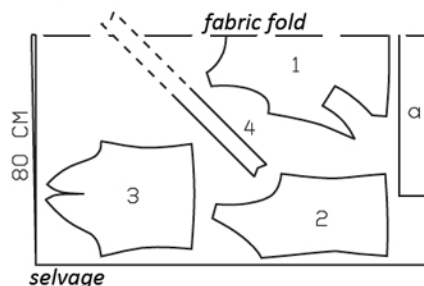
Seams and edges 1.5 cm (5/8 in), sleeve hems 4 cm (1 5/8 ins) (flare sleeve hem allowance).



Ponte Jersey, 160cm wide  
Sizes 36-44



Size 44



Right side faces in on a double layer of fabric; right side faces up on a single layer of fabric. Cut right and left pieces as opposites. The piece shown extending over the fabric fold should be cut last from a single layer of fabric.

### Cutting Out

1 front, on a fold	1x
2 back	2x
3 sleeve	2x
4 collar, on a fold	1x

Draft the following pieces NOT included in the pattern:

a) hem band, 97 – 101 – 105 – 109 – 113 cm (38 1/4 – 39 3/4 – 41 1/2 – 43 – 44 1/2 ins) long and 10 cm (4 ins) wide, finished width 5 cm (2 ins).

Vilene Bias Tape/ stay tape: Iron to wrong side of neck and armhole edges.

Batting: Lay on wrong side of collar piece and stitch to seam allowances, close to seam lines. Trim batting close to stitching.

## Sewing

Stitch front darts. Trim dart allowances to 1.5 cm (5/8 in) wide. Press darts open, pressing points flat.

Stitch side seams and sleeve seams. Press seam allowances open. Press sleeve hem allowances to inside and sew in place by hand.

Stitch sleeves to edges of armholes. Press allowances of sleeve attachment seams toward sleeves, as far as beginning of underarm curve.

Stitch shoulder seams and sleeve darts as continuous seams. Press seams open, pressing points of darts flat.

Stitch collar to neck edge from seam number 6. Trim seam allowances and press onto collar.

Stitch waistband to lower front and back edges. Press seam allowances onto waistband.

Stitch centre back seam of waistband, back, and collar as continuous seam. Clip seam allowance of collar into corner, close to stitching. Press seam allowances open.

Fold collar to inside on fold line. Turn inside collar edge under and sew to attachment seam.

Fold waistband in half, with wrong side facing in, and press. Lay inside edge flat over attachment seam. Work from right side of garment to stitch along attachment seam, thereby catching inside edge.

