

101 Jacket

Sizes 36, 38, 40, 42, 44

Back length approx. 58 cm (23 ins)

Materials

Checked double-faced fabric with one plain side, width: 150 cm (59 ins)
length: 2.10 m (23/8 yds) for all sizes.

Lining, width: 140 cm (55 ins)
length: 1.20 m (1 3/8 yds).

Interfacing.

4 large buttons, 1 flat inside button.

Note: To make both the jacket, style 101, and skirt, style 116 A, you will need 2.65 m (3 yds) of 150 cm wide main fabric and 1.70 m (1 7/8 yds) of 140 cm wide lining fabric.

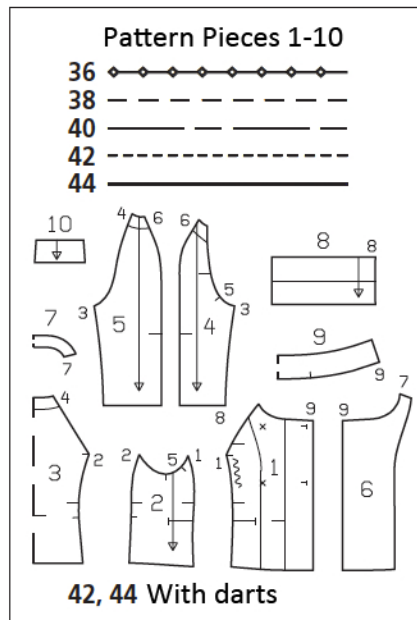
Recommended fabrics: Jacket fabrics of wool or blends.

Preparations

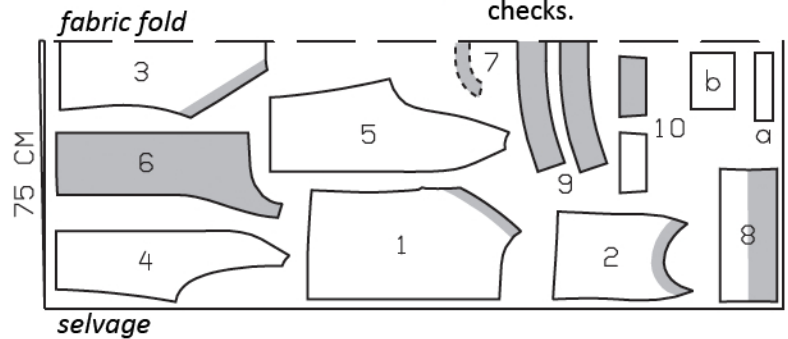
Print the pattern out on letter or A4 sized paper. It is **very** important to not scale or fit any of the pages, you must print the document in **actual size**. Your pattern will print on multiple pages, which you will then tile together. Arrange the sheets on a large, hard and flat surface matching up the numbers and letters (i.e. 6A to 6A). Cut or fold one of the sides and match the edge to it's corresponding side. Then, tape down in place so paper is secure.

Trace the pattern pieces from the pattern sheet following the lines and markings for the correct size and the correct style (101). This pattern also includes pattern pieces, lines and markings for style 102 and 103 that should be ignored.

The buttonholes and button markings on piece 1 are for size 36. For sizes 38 – 44, mark the top buttonhole the same distance from neck edge as for size 36. The bottom buttonhole is the same for all sizes. Move the top button marking accordingly.



Cut from a double layer of fabric, right side facing in. Match the checks.



Cutting Out

Double-faced fabric:

- 1 front 2x
- 2 side piece 2x
- 3 back, on a fold 1x
- 4 sleeve front 2x
- 5 sleeve back 2x
- 6 front facing 2x
- 7 back facing, on a fold 1x
- 8 sleeve band 2x
- 9 collar, on a fold 2x
- 10 flap 4x

Draft the following pieces NOT included:

- a) 2 welt strips (pockets with flaps), 19 cm (7 1/2 ins) long, 5 cm (2 ins) wide (incl. allowances),
- b) 2 pocket pieces, 19 cm (7 1/2 ins) wide and 15 cm (6 ins) long (incl. allowances).

Use the plain side of the fabric as the right side for the collar, flaps, and sleeve bands.

Lining: pieces 1, 4, and 5 to lining line; piece 3 to lining line and with an ease pleat of approx. 2 cm (3/4 in) at centre back; piece 2; and piece b.

Interfacing: See shaded area on pattern layout. Iron strips of interfacing, approx. 4 cm (1 5/8 ins) wide, to wrong side of fabric, over pocket markings. Also interface hem allowances.

burda style magazine patterns do not have seam allowance included.

Seam and hem allowance to be added:

Seams and edges 1.5 cm (5/8 in), hem 4 cm (1 5/8 ins), lining 1.5 cm (5/8 in).

Sewing

For sizes 36, 38 and 40, ease section seam edges of fronts, from • to •. For sizes 42 and 44, stitch bust darts in fronts. Press darts down.

Stitch side pieces to front pieces. Press seam allowances open.

Pockets with flaps: Stitch each interfaced flap piece to flap piece with no interfacing, along outer edges, right sides together. Turn right side out. Stitch flaps to attachment lines, – flaps point up. Fold welt strips lengthwise and press, right side facing out. Baste each folded welt strip in place so that fold edge lies 2.5 cm (1 in) below flap attachment seam. Stitch welts in place, 1 cm (3/8 in) from fold edge. These seams should be approx. 5 mm (3/16 in) shorter at the ends than the flap attachment seams. Slash between lines of stitching and clip diagonally toward seam ends. Do not cut pocket pieces. Turn welts up and press. Press flaps over pocket openings. Stitch pocket lining pieces to seam allowances of welt attachment seams and stitch pocket pieces of main fabric to seam allowances of flap attachment seams. Turn pocket pieces down and press. Fold small fabric triangles at pocket opening ends to inside and stitch to pocket pieces and welts, from seam end to seam end. Trim pocket pieces even and stitch together.

Stitch side pieces to back piece.

Stitch upper sleeve seams. Stitch bands to lower sleeve edges. Press seam allowances open. Stitch lower seams on sleeves and bands. Fold bands to inside on fold line and press. Lay inside edge of bands over attachment seam, without turning under. Stitch from right side of garment, along line of seam.

Stitch sleeves to armhole edges. Press seam allowances open, from neck edge to section seams. Do not press seam allowances flat at lower ends of seams.

Stitch shoulder seams of facing. Stitch outer collar piece to neck edge of jacket and stitch inside collar piece to facing. Press seam allow-



ances open.

Pin facing and inside collar right sides together with jacket and outer collar. Stitch along front edges and collar edges. Trim seam allowances, trimming corners diagonally. Turn collar right side out and turn facing to inside. Pin collar attachment seams together. Turn facing up again and stitch seam allowances together, close to collar attachment seam.

At hem edge, unfold facing. Press hem allowance to inside then turn down again.

Construct lining: On lining back, stitch ease pleat at top and bottom, each approx. 5 cm (2 ins) long, and baste in between. Press pleat to one side. Stitch seams of lining. Stitch sleeve linings to armhole edges.

Sew lining in place, hem coat: Stitch lining right sides together with inside facing edge. Press seam allowances onto lining. Lay lining inside coat, with wrong sides facing, pulling linings into sleeves. Turn hem allowance to inside and sew in place by hand. Turn facing to inside again. Turn lining edge under, along hem edge. Press fold edge lightly, and push upward in a shallow curve, and pin to hem allowance. Sew facings and lining in place. Lay extra length of lining down and press lightly. Above each sleeve lining hem, pin a fold, approx. 1 cm (3/8 in) deep. Turn edge of sleeve lining under and sew to hem allowance. Lay extra length of lining down and press.

Work buttonholes in right front. For inside button, work top buttonhole in left front. Sew buttons in place, to match buttonholes and as marked.