

117 Skirt

Sizes 34, 36, 38, 40, 42

Length from waist 77 cm (30 1/2 ins)

Materials

Tweed,
width: 150 cm (59 in)
length: 2.60 m (2 7/8 yds) for all sizes.

Piece of lining fabric, about 40 x 30 cm (16 x 12 ins),
for pocket pieces.

Petersham ribbon,
width: 4 cm (1 5/8 ins)
length: 1.40 – 1.50 – 1.60 – 1.70 – 1.75 m
(1 5/8 – 1 3/4 – 1 3/4 – 1 7/8 – 1 7/8 yds).

1 invisible zip, 22 cm (9 ins) long.

Recommended fabrics: Skirt fabrics of wool or
blends.

Preparations

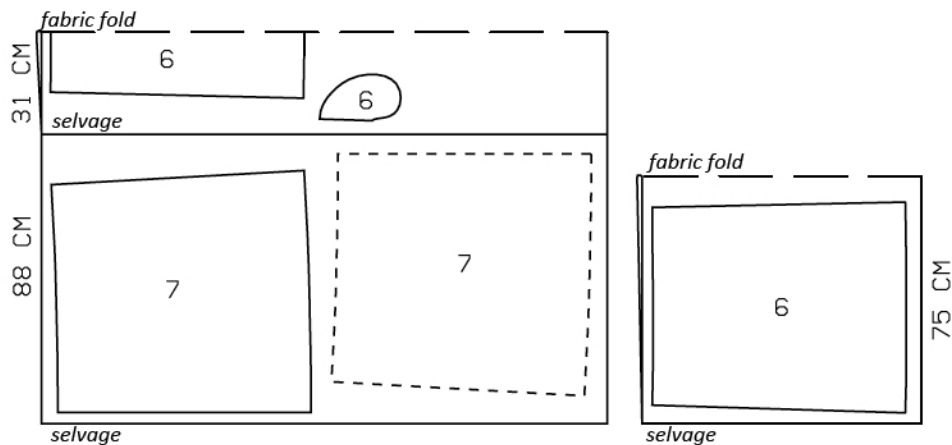
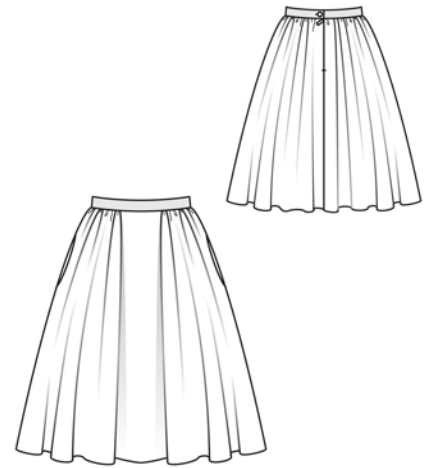
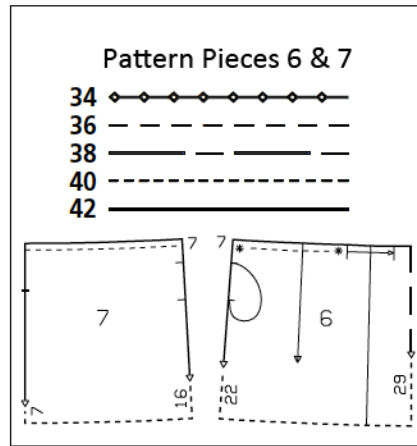
Print the pattern out on letter or A4 sized paper.
It is **very important** to not scale or fit any of the
pages, you must print the document in
actual size. Your pattern will print on multiple
pages, which you will then tile together. Arrange
the sheets on a large, hard and flat surface
matching up the numbers and letters (i.e. 6A to
6A). Cut or fold one of the sides and match the
edge to it's corresponding side. Then, tape down
in place so paper is secure.

Trace the pattern pieces from the pattern sheet
following the lines and markings for your size.

Trace the pocket piece from piece 6 as a separate
pattern piece – it is the same for all sizes. Cut the
front skirt panel apart on the marked seam line =
centre and side front skirt piece.

burda style magazine patterns do not have seam
allowance included.

Seam and hem allowance to be added:
Seams and edges 1.5 cm (5/8 in), hem 4 cm (1
5/8 ins).



Cutting Out

Tweed:

6 skirt centre front, on a fold 1x
6 skirt side front 2x
pocket piece 2x
7 skirt back 2x

Lining: pocket piece (piece 6).

Sewing

Stitch centre front skirt piece to side front skirt piece. Stitch side seams, but do not stitch across pocket openings.

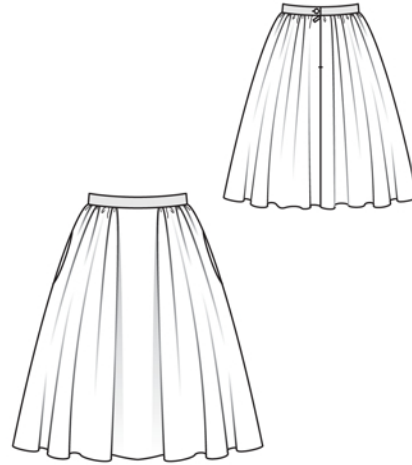
In-seam pockets: Pin pocket pieces right sides together with seam allowances of pocket opening edges – pocket lining pieces in front, pocket pieces of main fabric in back. Stitch pocket pieces in place, directly along marked seam lines. Press pocket pieces forward and stitch together.

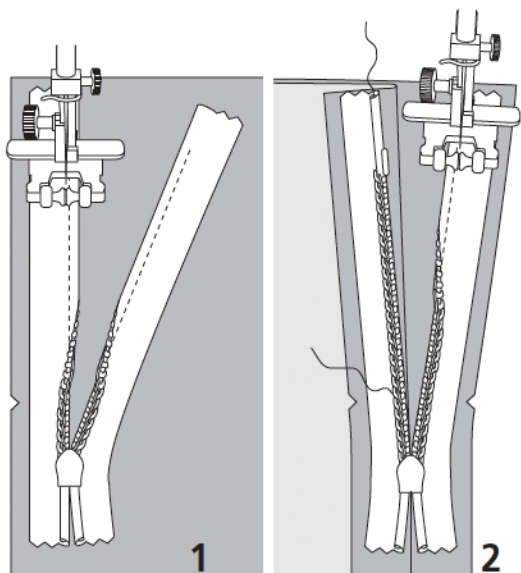
Sew invisible zip to back skirt pieces, see the “Helpful Hint” on next page. Stitch centre back seam from lower edge to zip.

Gather upper edge of skirt front between pairs of asterisks to 10 – 10.5 – 11 – 11.5 – 12 cm (4 – 4 1/4 – 4 3/8 – 4 1/2 – 4 3/4 ins) long. Gather upper edge of each skirt back to 16 – 17 – 18 – 19 – 20 cm (6 3/8 – 6 3/4 – 7 – 7 1/2 – 8 ins) long. Fold pleats in skirt front in arrow direction and baste to upper edge.

Waistband: Turn in one end of petersham ribbon, about 1 cm (3/8 in) wide, and press. Measure 68 – 72 – 76 – 80 – 84 cm (26 3/4 – 28 1/2 – 30 – 31 1/2 – 33 ins) from this end and mark. Work from inside to lay petersham ribbon on seam allowances on upper edge of skirt so that pressed end of ribbon extends past right back slit edge, 3 cm (1 1/4 ins) wide, and marking meets left edge of slit. Edgestitch lower edge of ribbon in place. Lay ribbon out over left edge of opening and pin ribbon edges together, catching seam allowance of skirt. Turn in end of ribbon. Stitch edges of ribbon together. Work buttonhole in left end of waistband.

Press hem under. Sew by hand.





These special zippers come in various lengths. The zipper should be at least 2 cm (3/4 in) longer than the slit. It is sewn in place before the seam below the slit is stitched. A special presser foot is required to sew the zipper in place.

Sewing the zipper in place:

Open the zipper and push the coil back with your thumbnail to reveal the seam marking between the tape and the coil. Place the open zipper right side down on the right fabric side of one slit edge.

In order to stitch the zipper in place exactly along the marked seam line, you must first calculate the distance between the tape edge and the fabric edge as follows: width of seam allowance minus 1 cm (3/8 in) tape width = distance from edge of fabric. This will yield a value of 5 mm (3/16 in) if the width of the seam allowance is 1.5 cm (5/8 in).

Pin the top end of the zipper tape in place, the calculated distance from the edge of the fabric. The bottom end of the zipper will extend past the marked end of the slit. Place the presser foot on the zipper so that the coil is in the notch to the right of the needle (1). Stitch zipper in place, from the top to the marked end of the slit. Close zipper.

Place the other zipper tape face down on the opposite slit edge and pin in place at the top. Open zipper again. Place the presser foot on the top end of the zipper so that the coil is in the notch to the left of the needle (2). Sew the zipper in place, from the top to the end of the slit. Close zipper.

Now stitch the seam below the zipper, from bottom to top. Turn the loose lower end of the zipper out of the way, over the seam allowance. Stitch as close as possible to the last stitches of the zipper seams. Trim away excess zipper and bind the end with a scrap of fabric.