

127 Skirt

Sizes 36, 38, 40, 42, 44
 Skirt length 60 cm (23 3/4 ins)

Materials

Lace fabric,
 width: 95 cm (38 ins)
 length: 1.30 m (1 1/2 yds) for all sizes.

Crêpe satin, to back the lace pieces
 width: 140 cm (55 ins)
 length: 0.65 m (7/8 yd).

Vilene Bias Tape/ stay tape.

Imitation leather band, 2 cm (3/4 in) wide and 1.70 – 1.75 – 1.85 – 1.95 – 2.00 m (1 7/8 – 2 – 2 1/8 – 2 1/4 – 2 1/4 yds) long.

1 invisible zip, 22 cm (9 ins) long.

Recommended fabrics: Lace fabrics. Satin to back the lace pieces.

Preparations

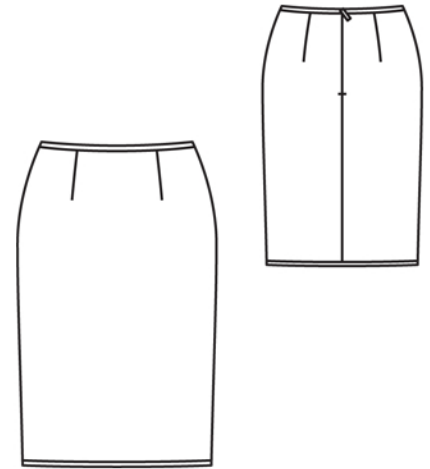
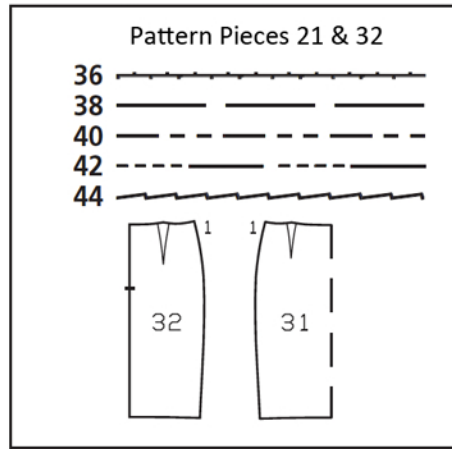
Print the pattern out on letter or A4 sized paper. It is **very important** to not scale or fit any of the pages, you must print the document in **actual size**. Your pattern will print on multiple pages, which you will then tile together. Arrange the sheets on a large, hard and flat surface matching up the numbers and letters (i.e. 6A to 6A). Cut or fold one of the sides and match the edge to it's corresponding side. Then, tape down in place so paper is secure.

Trace the pattern pieces from the pattern sheet following the lines and markings for the correct size and the correct style (127). This pattern also includes pattern pieces, lines and markings for style 128 that should be ignored.

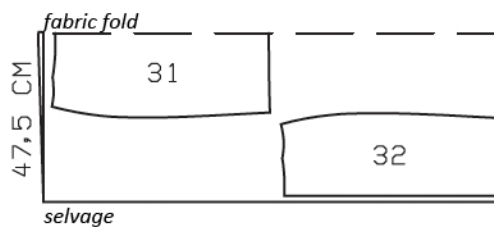
burda style magazine patterns do not have seam allowance included.

Seam and hem allowance to be added:

Seams and edges 1.5 cm (5/8 in)

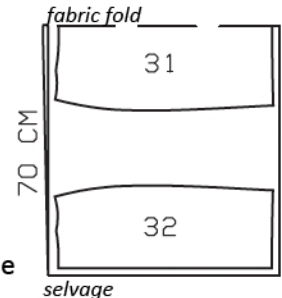


Lace, 95cm wide



Cut from a double layer of fabric, right side facing in.

Crêpe satin, 140cm wide



Cutting Out

Lace fabric / crêpe satin:

31 front skirt panel, on a fold 1x
 32 back skirt panel 2x

Vilene Bias Tape/ stay tape: On crêpe satin skirt pieces, iron to wrong sides of upper edges (chain stitch close to seam allowance) and to wrong sides of zip slit edges (chain stitch on seam line) .

Sewing

Baste lace fabric pieces to corresponding pieces of crêpe satin, with wrong side facing right side. Baste together along upper and lower edges, next to seam allowance. Treat these pieces as one layer of fabric from now on.

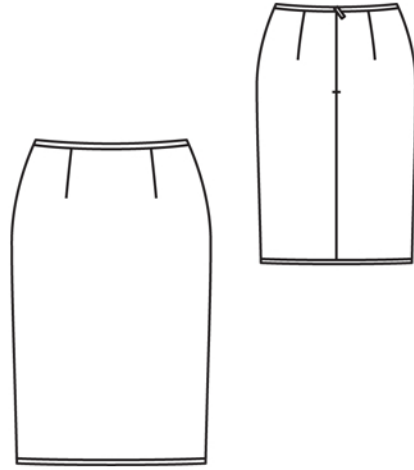
Stitch front and back darts, backstitching to tie-off stitching at seam line on upper edge. Press darts toward centre.

Stitch side seams, backstitching to tie-off stitching at seam line on upper edge and at hem line.

Bind upper skirt edge: Trim away allowance on upper skirt edge. On wrong side of imitation leather band, use a soft pencil to mark fold edge 8 mm (a generous 1/4 in) from one long edge. Lay inner side of upper skirt edge on narrower part of band, along marked fold edge. Stitch 7 mm (1/4 in) from edge. Fold extending edge of band over skirt edge and edgestitch to skirt.

Sew invisible zip to back skirt panels, see the "Helpful Hint" on next page. Leave zip tapes extending at upper skirt edge. Stitch centre back seam from lower edge to zip. Backstitch to tie-off ends of seam at marked hem line on lower end and at slit end on upper end. Turn upper ends of zip tapes under and sew in place, together with allowance on upper skirt edge.

Trim away hem allowance. Stitch ends of imitation leather band together to match hem edge. Bind lower skirt edge as instructed for upper edge, matching seam of band to one side seam.





These special zippers come in various lengths. The zipper should be at least 2 cm (3/4 in) longer than the slit. It is sewn in place before the seam below the slit is stitched. A special presser foot is required to sew the zipper in place.

Sewing the zipper in place:

Open the zipper and push the coil back with your thumbnail to reveal the seam marking between the tape and the coil. Place the open zipper right side down on the right fabric side of one slit edge.

In order to stitch the zipper in place exactly along the marked seam line, you must first calculate the distance between the tape edge and the fabric edge as follows: width of seam allowance minus 1 cm (3/8 in) tape width = distance from edge of fabric. This will yield a value of 5 mm (3/16 in) if the width of the seam allowance is 1.5 cm (5/8 in).

Pin the top end of the zipper tape in place, the calculated distance from the edge of the fabric. The bottom end of the zipper will extend past the marked end of the slit. Place the presser foot on the zipper so that the coil is in the notch to the right of the needle (1). Stitch zipper in place, from the top to the marked end of the slit. Close zipper.

Place the other zipper tape face down on the opposite slit edge and pin in place at the top. Open zipper again. Place the presser foot on the top end of the zipper so that the coil is in the notch to the left of the needle (2). Sew the zipper in place, from the top to the end of the slit. Close zipper.

Now stitch the seam below the zipper, from bottom to top. Turn the loose lower end of the zipper out of the way, over the seam allowance. Stitch as close as possible to the last stitches of the zipper seams. Trim away excess zipper and bind the end with a scrap of fabric.