

123A Top

Sizes 34, 36, 38, 40, 42, 44

Back length: approx. 65 cm (25 3/4 ins)

Materials

Stretch jersey,
width: 140 cm (55 ins)
length: 1.50 m (1 3/4 yds) for all sizes.

Duchesse, as contrasting fabric
width: 140 cm (55 ins)
length: 0.20 m (1/4 yd).

Interfacing.

Vilene Bias Tape/ stay tape.

1 small button.

A twin sewing machine needle.

Recommended fabrics: Stretch jersey for front, back, and sleeves. Use only two-way stretch jersey fabrics.

Preparations

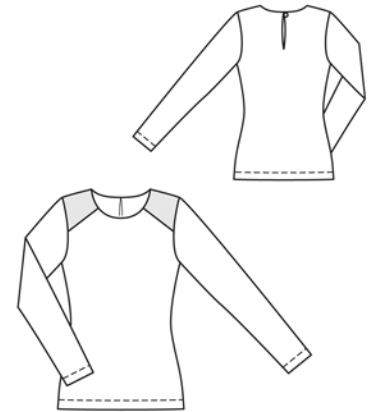
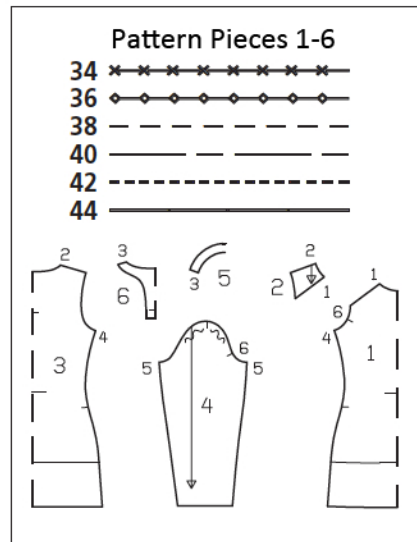
Print the pattern out on letter or A4 sized paper. It is **very important** to not scale or fit any of the pages, you must print the document in **actual size**. Your pattern will print on multiple pages, which you will then tile together. Arrange the sheets on a large, hard and flat surface matching up the numbers and letters (i.e. 6A to 6A). Cut or fold one of the sides and match the edge to it's corresponding side. Then, tape down in place so paper is secure.

Trace the pattern pieces from the pattern sheet following the lines and markings for the correct size and the correct style (123A). This pattern also includes pattern pieces, lines and markings for style 123B that should be ignored.

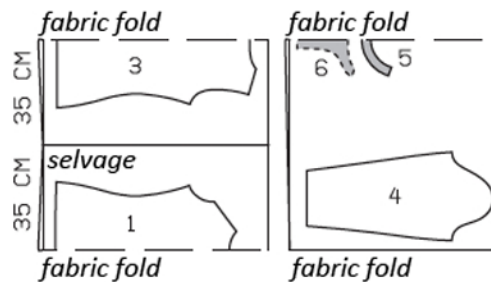
burda style magazine patterns do not have seam allowance included.

To be added:

Seams and edges 1.5 cm (5/8 in), hem and sleeve hems 4 cm (1 5/8 ins) (flare sleeve hem allowance).



Jersey



Contrasting Fabric



Fold the fabric as shown in the pattern layout, right side facing in.

Cutting Out

Stretch jersey:

- 1 front, on a fold 1x
- 3 back, on a fold 1x
- 4 sleeve 2x
- 5 front neck facing, on a fold 1x
- 6 back neck facing, on a fold 1x

Contrasting fabric:

- 2 front yoke 2x

Interfacing: See shaded area on pattern layout. Iron a strip of interfacing, approx. 3 cm (1 1/4 ins) wide, to wrong side of back, over marked slit. Iron Vilene Bias Tape/ stay tape to wrong side of back shoulder seam edges.

Sewing

Note: Stitch seams on stretch fabrics with a special stretch stitch or at a narrow zigzag setting. Stitch hems with a twin machine needle to keep them elastic.

Stitch front yokes to front (seam number 1). Press seam allowances onto yokes. Topstitch yokes close to attachment seams.

Stitch shoulder seams on top and on neck facing. On top, press seam allowances forward. On facing, press seam allowances open.

Hand baste along marked centre back slit, to make it visible on right side of fabric. Pin facing to back, over marked slit, right sides together, and pin facing to neck edge. Working from wrong side, stitch 2 mm (a scant 1/8 in) around slit mark then continue stitching along neck edge. At centre back, cut between lines of stitching. Trim seam allowances of neck edge. At neck edge, turn facing up and stitch to seam allowances, as far as possible, close to seam. Turn facing to inside and sew to shoulder seams.

Stitch side seams and sleeve seams. Set in sleeves, easing sleeve caps.

Fasten top of back slit with a button and thread loop.

