

### 114 Dress

Sizes 36, 38, 40, 42, 44

Length from elastic casing approx. 62 cm (24 1/2 ins)

### Materials

Crêpe satin,  
width: 135 cm (53 ins)  
length: 3.00 – 3.00 – 3.00 – 3.05 – 3.05 m  
(3 3/8 – 3 3/8 – 3 3/8 – 3 1/2 – 3 1/2 yds).

Interfacing.

Elastic,  
width: 1 cm (3/8 in)  
length: 0.65 – 0.70 – 0.70 – 0.75 – 0.80 m  
(26 – 28 – 28 – 30 – 32 ins).

11 small buttons. 1 buckle, bar width 2.5 cm (1 in).

Recommended fabrics: Lightweight, softly draping dress fabrics.

### Preparations

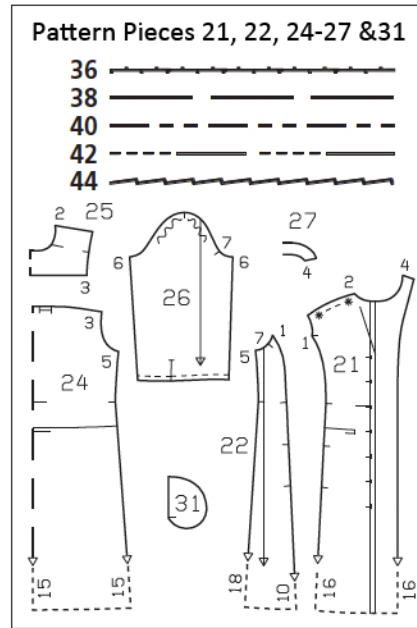
Print the pattern out on letter or A4 sized paper. It is **very important** to not scale or fit any of the pages, you must print the document in **actual size**. Your pattern will print on multiple pages, which you will then tile together. Arrange the sheets on a large, hard and flat surface matching up the numbers and letters (i.e. 6A to 6A). Cut or fold one of the sides and match the edge to it's corresponding side. Then, tape down in place so paper is secure.

Trace the pattern pieces from the pattern sheet following the lines and markings for the correct size and the correct style (114). This pattern also includes pattern pieces, lines and markings for style 111, 112, 113 that should be ignored.

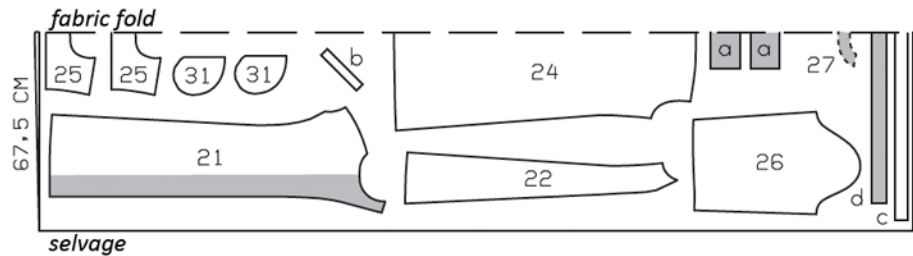
**burda style magazine patterns do not have seam allowance included.**

Seam and hem allowance to be added:

Seams and edges 1.5 cm (5/8 in), hem 4 cm (1 5/8 ins).



Cut from a double layer of fabric, right side facing in.



### Cutting Out

Use the matte side of the crêpe satin as the right side of the fabric.

- 21 centre front 2x
- 22 side front 2x
- 24 back, on a fold 1x
- 25 yoke, on a fold 2x
- 26 sleeve 2x
- 27 back facing, on a fold 1x
- 31 pocket piece 4x

Draft the following pieces NOT included in the pattern:

- a) 2 cuffs with 2 cm (3/4 in) underlap, 23.5 – 24 – 24.5 – 25 – 25.5 cm (9 1/4 – 9 1/2 – 9 3/4 – 9 7/8 – 10 ins) long, 10 cm (4 ins) wide, finished width 5 cm (2 ins),
- b) 2 bias binding strips for sleeve vents, 17 cm (6 3/4 ins) long, 3 cm (1 1/4 ins) wide (incl. allowances),
- c) facing strip for casing, 101 – 105 – 109 – 113 – 117 cm (39 3/4 – 41 1/2 – 43 – 44 1/2 – 46 ins) long, 3.5 cm (1 1/2 ins) wide (incl. allowances),
- d) belt, 100 – 105 – 110 – 110 – 115 cm (39 1/2 – 41 1/2 – 43 1/2 – 43 1/2 – 45 1/4 ins) long and 5 cm (2 ins) wide, finished width 2.5 cm (1 in).

Interfacing See shaded area on pattern layout. Interface belt as well.

## Sewing

Stitch side fronts to centre fronts, not stitching across pocket openings.

**Inseam pockets:** Pin pocket pieces right sides together with seam allowances of pocket opening edges and stitch in place, directly along marked seam lines. Press pocket pieces forward and stitch together. Press section seam allowances onto centre fronts.

**Gather upper front edges between asterisks.** Lay pleats in upper back edge in direction of arrows and baste.

**Yoke:** Pin yoke pieces to upper edge of back, pinning one yoke to outside and one to inside. Stitch yokes in place. Press yokes up. Stitch outer yoke right sides together with upper front edges. Turn under edges of inside yoke and sew to attachment seams. Baste yokes together along neck and armhole edges, not turning edges under.

Stitch side seams. Press hem allowance to inside and sew in place by hand.

On fabric strip for casing, press long edges to wrong side, 1 cm (3/8 in) wide. Baste facing strip to wrong side of front and back, over marked casing lines, turning ends under. Work from right side to stitch facing strip in place, as marked, leaving ends open. Pull elastic into casing and sew ends together to a circumference of 60 – 64 – 68 – 72 – 76 cm (23 3/4 – 25 1/4 – 26 3/4 – 28 1/2 – 30 ins).

Turn front self-facings to outside and stitch to back facing. Stitch facing to neck edge, right sides together. Trim seam allowances. Turn facing to inside. Press edges. Sew facing to hem edge. Sew inside facing edge to yoke, not exiting needle on right fabric side.

Stitch side seams. Press hem allowance to inside, turn raw edge under, and stitch.

Turn front self-facings to outside and stitch to back facing. Stitch facing to neck edge, right sides together. Trim seam allowances. Turn



facing to inside. Press edges. Sew facing to hem edge. Sew inside facing edge to yokes, not exiting needle on right fabric side.

Slash sleeve vents as marked. Spread cut edges open to a straight line and stitch to one long edge of binding strip, as narrowly as possible. Turn binding strip over attachment seam into vent, fold to a width of 7 mm (1/4 in), turn edge under, and sew to attachment seam. On inside, stitch diagonally across binding at top of vent. On front edge of each vent, turn binding to inside and baste to lower sleeve edge.

Stitch sleeve seams and gather lower sleeve edges to match cuffs.

Stitch cuffs to lower sleeve edges. Press seam allowances of attachment seams and of other long cuff edges onto cuffs. Fold cuffs lengthwise, right side facing in. Stitch across ends. Turn right side out. Baste inside edges in place. Topstitch cuffs close to attachment seams.

Set in sleeves, easing sleeve caps.

Work buttonholes in right front as marked. Work 2 buttonholes in front edge of each cuff.