

### 116B Skirt

Sizes 36, 38, 40, 42, 44

Skirt length: 50 cm (19 3/4 ins)

Upper edge of skirt sits 3 cm (1 1/4 ins) below waist

### Materials

Brushed wool fabric,  
width: 150 cm (59 ins)  
length: 0.60 – 0.60 – 0.60 – 1.20 – 1.20 m  
(3/4 – 3/4 – 3/4 – 1 3/8 – 1 3/8 yds).

Lining,  
width: 140 cm (55 ins)  
length: 0.60 m (3/4 yd) for all sizes.

Vilene Bias Tape/ stay tape.

1 invisible zip, 22 cm (9 ins) long.

Recommended fabrics: Skirt fabrics with some bc of wool or blends.

### Preparations

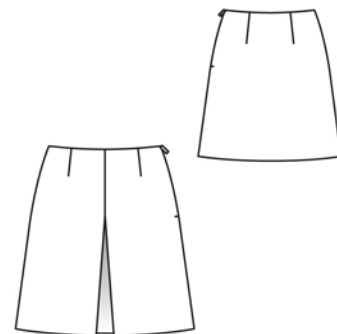
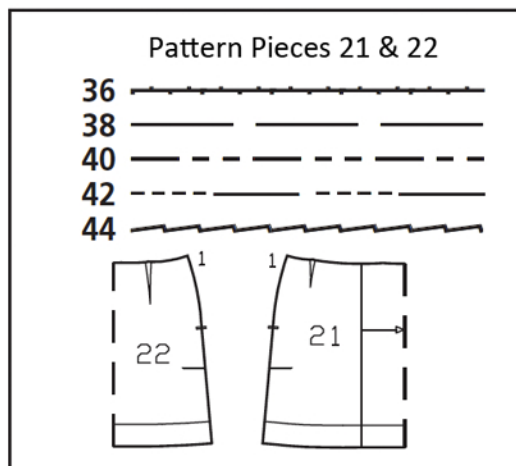
Print the pattern out on letter or A4 sized paper. It is **very** important to not scale or fit any of the pages, you must print the document in actual size. Your pattern will print on multiple pages, which you will then tile together. Arrange the sheets on a large, hard and flat surface matching up the numbers and letters (i.e. 6A to 6A). Cut or fold one of the sides and match the edge to it's corresponding side. Then, tape down in place so paper is secure.

Trace the pattern pieces from the pattern sheet following the lines and markings for the correct size and the correct style (116B). This pattern also includes pattern pieces, lines and markings for style 115, 116A & 117 that should be ignored.

**burda style magazine patterns do not have seam allowance included.**

Seam and hem allowance to be added:

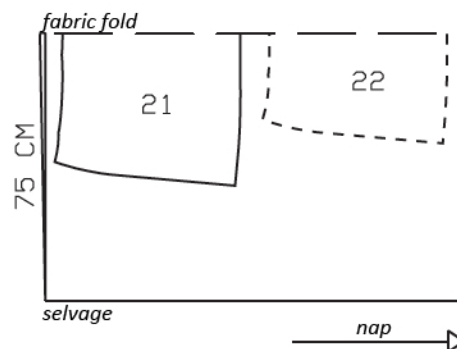
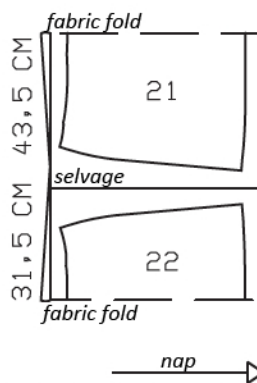
Seams and edges 1.5 cm (5/8 in), hem 4 cm (1 5/8 ins), lining 1.5 cm (5/8 in).



Brushed Wool, 150cm wide

Sizes 36-40

Sizes 42, 44



Fold the fabric as shown in the pattern layout, right side facing in. Note direction of nap.

### Cutting Out

Brushed Wool:

21 front skirt panel, on a fold 1x  
22 back skirt panel, on a fold 1x

Lining: piece 21 to centre front (without pleat), piece 22.

Vilene Bias Tape/ stay tape: Iron to wrong side of zip slit edges on skirt pieces and to wrong side of upper edge of lining.

## Sewing

**Inverted pleat:** Fold skirt front at centre, so that pleat lines meet, right side facing in. Stitch pleat from upper edge to arrow mark and baste below mark. Lay pleat in direction of arrow and press. Baste pleat to upper edge.

Stitch front and back darts. Press darts toward centre.

Sew invisible zip to left slit edges, see the “Helpful Hint” on next page. Stitch left side seam from lower edge to zip. Press seam allowances open.

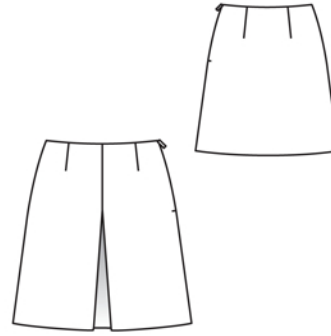
Stitch right side seam.

Stitch darts and seams of lining, leaving slit for zip open as mirror image of skirt.

**Face upper skirt edge:** Pull lining over skirt, with right sides facing. Pin lining to upper skirt edge. At zip slit, turn lining back, approx. 5 mm (3/16 in) before slit edge, and pin to upper edge. Turn allowances of skirt slit edges to outside and pin to upper edge, over lining. Stitch along upper skirt edge. Turn allowances of slit edges to inside. Turn lining up and stitch to seam allowances, as far as possible, close to seam. Turn lining to inside and sew to zip tapes.

Remove basting at pleat. Press hem allowance to inside and sew in place by hand. Repress pleat at hem edge.

Hem lining so that it is approx. 2 cm (3/4 in) shorter than the skirt.





These special zippers come in various lengths. The zipper should be at least 2 cm (3/4 in) longer than the slit. It is sewn in place before the seam below the slit is stitched. A special presser foot is required to sew the zipper in place.

### **Sewing the zipper in place:**

Open the zipper and push the coil back with your thumbnail to reveal the seam marking between the tape and the coil. Place the open zipper right side down on the right fabric side of one slit edge.

In order to stitch the zipper in place exactly along the marked seam line, you must first calculate the distance between the tape edge and the fabric edge as follows: width of seam allowance minus 1 cm (3/8 in) tape width = distance from edge of fabric. This will yield a value of 5 mm (3/16 in) if the width of the seam allowance is 1.5 cm (5/8 in).

Pin the top end of the zipper tape in place, the calculated distance from the edge of the fabric. The bottom end of the zipper will extend past the marked end of the slit. Place the presser foot on the zipper so that the coil is in the notch to the right of the needle (1). Stitch zipper in place, from the top to the marked end of the slit. Close zipper.

Place the other zipper tape face down on the opposite slit edge and pin in place at the top. Open zipper again. Place the presser foot on the top end of the zipper so that the coil is in the notch to the left of the needle (2). Sew the zipper in place, from the top to the end of the slit. Close zipper.

Now stitch the seam below the zipper, from bottom to top. Turn the loose lower end of the zipper out of the way, over the seam allowance. Stitch as close as possible to the last stitches of the zipper seams. Trim away excess zipper and bind the end with a scrap of fabric.