

124 Dress

Sizes 34, 36, 38, 40, 42

Length from waist 60 cm (23 3/4 ins)

Materials

Satin with widthwise stretch,

width: 145 cm (57 ins)

length: 1.65 – 1.65 – 1.70 – 1.75 – 1.75 m
(1 7/8 – 1 7/8 – 1 7/8 – 2 – 2 yds).

Fine stretch jersey, as contrasting fabric

width: 135 cm (53 ins)

length: 0.35 – 0.35 – 0.40 – 0.40 – 0.40 m (1/2 yd).

A piece of lining, approx. 40 x 30 cm (16 x 12 ins),
for the pockets.

Interfacing.

1 invisible zip, 40 cm (16 ins) long.

Recommended fabrics: Softly draping dress fabrics,
with or without elastane.

Preparations

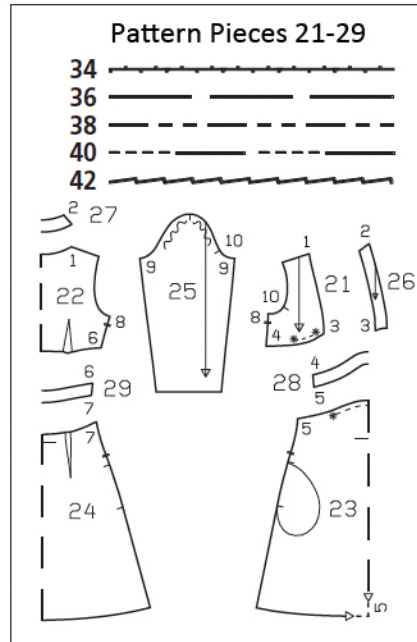
Print the pattern out on letter or A4 sized paper. It is **very important** to not scale or fit any of the pages, you must print the document in **actual size**. Your pattern will print on multiple pages, which you will then tile together. Arrange the sheets on a large, hard and flat surface matching up the numbers and letters (i.e. 6A to 6A). Cut or fold one of the sides and match the edge to it's corresponding side. Then, tape down in place so paper is secure.

Trace the pattern pieces from the pattern sheet following the lines and markings for your size. Trace pocket from piece 23 as a separate pattern piece – the same for all sizes.

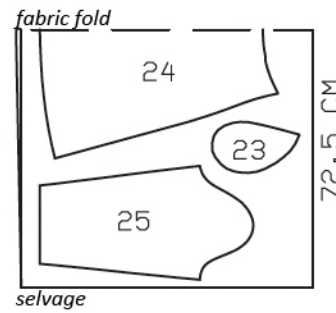
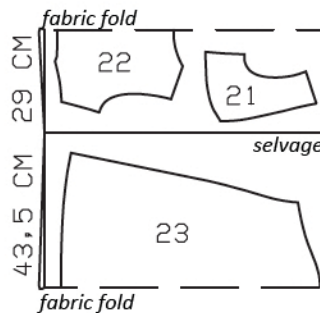
burda style magazine patterns do not have seam allowance included.

To be added:

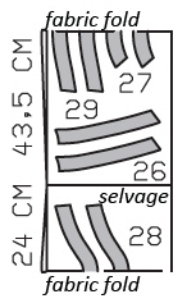
Seams and edges 1.5 cm (5/8 in), hem and sleeve hems 4 cm (1 5/8 ins) (flare sleeve hem allowance).



Satin



Jersey



Fold the fabric as shown in the pattern layout, right side facing in.

Cutting Out

Satin:

21 front	2x
22 back, on a fold	1x
23 front skirt panel, on a fold	1x
pocket piece	2x
24 back skirt panel, on a fold	1x
25 sleeve	2x

Jersey:

26 front neck band	4x
27 back neck band, on a fold	2x
28 front band, on a fold	2x
29 back band, on a fold	2x

Lining: pocket piece (piece 23).

Interfacing: See shaded area on pattern layout.

Sewing

Stitch darts in bodice back and skirt back. Press darts toward centre back. Stitch shoulder seams on bodice and neck bands. Press seam allowances open.

Stitch outer neck band to neck edge of dress. Trim seam allowances and press onto band. Lay inside band right sides together with attached band and stitch long edges together. Trim seam allowances and clip curves. Turn band right side out. Press seamed edge. Turn inside band edge under and baste over attachment seam. Stitch from right side, along seam, catching inner edge.

Gather upper edge of skirt front and lower edges of bodice fronts between asterisks. Baste lower front bodice edges to upper edge of one front band, right sides together – front neck bands meet at centre front. Lay second front band on first band, over fronts. Stitch upper band edges together. Trim seam allowances. Turn bands down and press attachment seam. Stitch back bands to back in same manner. Stitch skirt front to lower edge of outer front band and stitch skirt back to outer back band. Turn edges of inside bands under and baste over lower attachment seams. Stitch from right side, along seams, catching inner edges of bands.

Stitch right side seam (seam number 8), not stitching across pocket opening. Press seam open. Sew invisible zip to left side edges, between slit marks, see the “Helpful Hint” on next page. Leave top ends of zip tapes loose. Stitch left side seam above and below zip, not stitching across pocket opening.

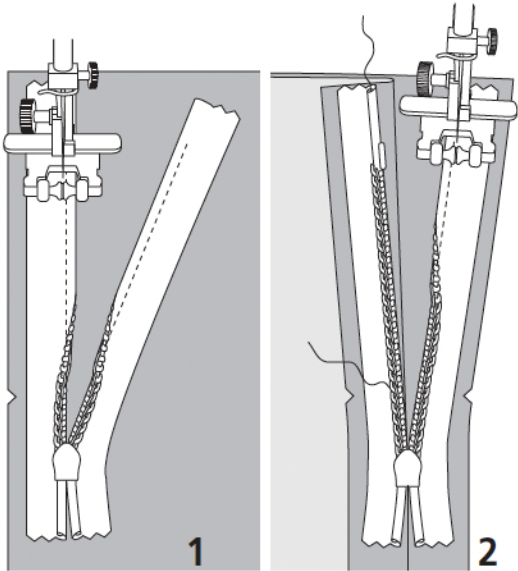
Inseam pockets: Pin pocket pieces right sides together with seam allowances of pocket opening edges and stitch in place, directly along marked seam lines. Press pocket pieces forward and stitch together. Stitch pocket lining piece to front and stitch pocket piece of dress fabric to back.



Stitch sleeve seams. Press sleeve hem allowances to inside and sew in place by hand.

Set in sleeves, easing sleeve caps.

Press hem allowance to inside and sew in place by hand.



These special zippers come in various lengths. The zipper should be at least 2 cm (3/4 in) longer than the slit. It is sewn in place before the seam below the slit is stitched. A special presser foot is required to sew the zipper in place.

Sewing the zipper in place:

Open the zipper and push the coil back with your thumbnail to reveal the seam marking between the tape and the coil. Place the open zipper right side down on the right fabric side of one slit edge.

In order to stitch the zipper in place exactly along the marked seam line, you must first calculate the distance between the tape edge and the fabric edge as follows: width of seam allowance minus 1 cm (3/8 in) tape width = distance from edge of fabric. This will yield a value of 5 mm (3/16 in) if the width of the seam allowance is 1.5 cm (5/8 in).

Pin the top end of the zipper tape in place, the calculated distance from the edge of the fabric. The bottom end of the zipper will extend past the marked end of the slit. Place the presser foot on the zipper so that the coil is in the notch to the right of the needle (1). Stitch zipper in place, from the top to the marked end of the slit. Close zipper.

Place the other zipper tape face down on the opposite slit edge and pin in place at the top. Open zipper again. Place the presser foot on the top end of the zipper so that the coil is in the notch to the left of the needle (2). Sew the zipper in place, from the top to the end of the slit. Close zipper.

Now stitch the seam below the zipper, from bottom to top. Turn the loose lower end of the zipper out of the way, over the seam allowance. Stitch as close as possible to the last stitches of the zipper seams. Trim away excess zipper and bind the end with a scrap of fabric.