

### 121 Dress

Sizes 17, 18, 19, 20, 21

Length from waist 55 cm (21 3/4 ins)

### Materials

**Techno poplin with widthwise stretch,**  
width: 120 cm (47 ins)  
length: 1.25 – 1.25 – 1.25 – 1.25 – 1.40 m  
(1 1/2 – 1 1/2 – 1 1/2 – 1 1/2 – 1 5/8 yds) of  
blue and 1.10 m (1 1/4 yds) of brown (for all sizes).

**Stretch lining,**  
width: 135 cm (53 ins)  
length: 1.10 m (1 1/4 yds).

Interfacing.

Vilene Bias Tape/ stay tape.

1 invisible zip, 60 cm (24 ins) long.

**Recommended fabrics:** Stretch dress fabrics. Use only fabrics with width-wise or two-way stretch.

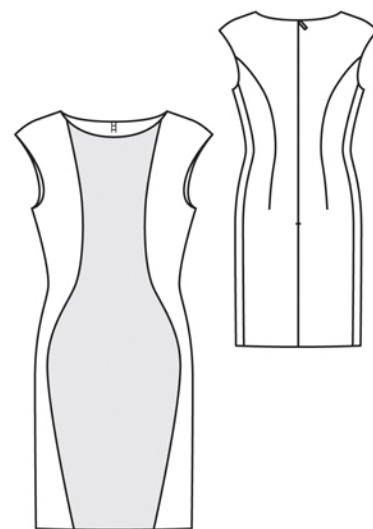
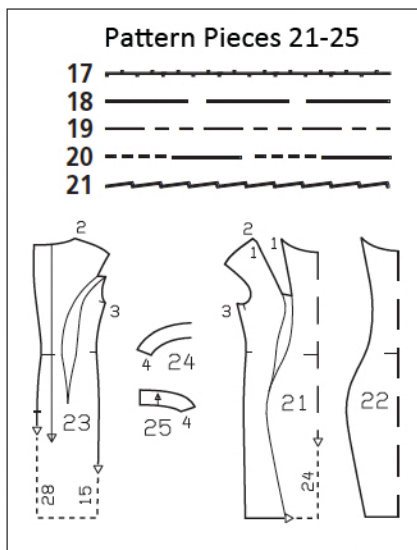
### Preparations

Print the pattern out on letter or A4 sized paper. It is **very important** to not scale or fit any of the pages, you must print the document in **actual size**. Your pattern will print on multiple pages, which you will then tile together. Arrange the sheets on a large, hard and flat surface matching up the numbers and letters (i.e. 6A to 6A). Cut or fold one of the sides and match the edge to it's corresponding side. Then, tape down in place so paper is secure.

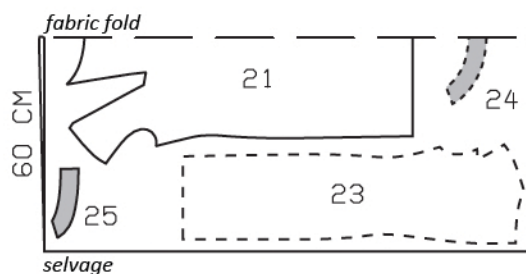
Trace the pattern pieces from the pattern sheet following the lines and markings for your size. **burda style magazine patterns do not have seam allowance included.**

To be added:

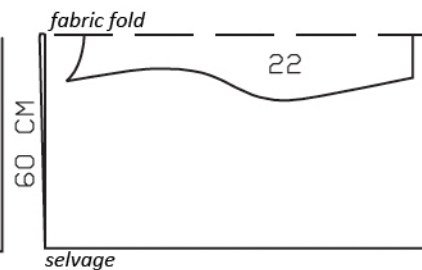
Seams and edges 1.5 cm (5/8 in), hem 4 cm (1 5/8 ins), no allowance on vertical edges of centre front. Cut lining pieces with 1.5 cm (5/8 in) wide seam and hem allowances.



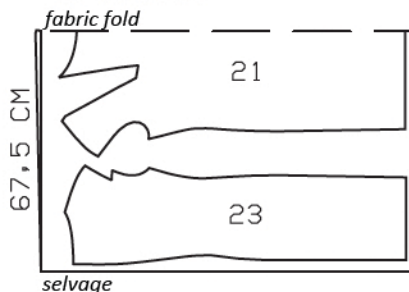
**Techno Poplin, 120 cm wide**  
**Blue**



**Brown**



**Stretch Lining,**  
**135 cm wide**



Cut from a double layer of fabric, right side facing in.

### Cutting Out

**Blue fabric:**

21 front, on a fold	1x
23 back	2x
24 front neck facing, on a fold	1x
25 back neck facing	2x

**Brown fabric:**

22 centre front, on a fold	1x
----------------------------	----

Lining: pieces 21 and 23.

**Interfacing:** See shaded area on pattern layout. Iron Vilene Bias Tape/ stay tape to wrong sides of neck and armhole edges, zip slit edges and front shoulder seam edges.

## Sewing

**Note:** Stitch seams on stretch fabrics with a special stretch stitch or at a narrow zigzag setting.

On front and back pieces, cut along centre of each dart, to the waist. Stitch darts. Trim dart allowances to 1 cm (3/8 in) wide and press open, pressing points of darts flat.

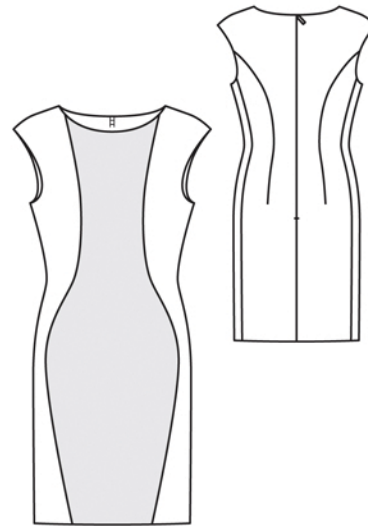
Pin centre front piece to front, with wrong side facing right side, and matching centre fronts – vertical edges meet dart and placement lines. Edgestitch vertical edges in place, with straight stitch.

Stitch shoulder seams, beginning and ending exactly at marked neck edge.

Stitch darts in lining as instructed. Neaten lower edges of neck facings. Baste facings to neck edges of front and back lining pieces, with wrong side facing right side. Edgestitch lower facing edges in place. Stitch shoulder seams, beginning and ending exactly at marked seam line.

**Neck and armhole edges:** Lay lining (with facing) on dress, right sides together. Stitch along neck edge. Trim seam allowances. Turn lining up and stitch to seam allowances, close to seam. Stitch lining to armhole edges, right sides facing. Trim seam allowances and clip curves close to stitching. Turn lining toward armholes and stitch to seam allowances, as far as possible. To turn dress right side out, pull backs through shoulder tunnels, to front. Press faced edges.

At neck edge, turn up again. Sew invisible zip to back slit edges, beginning at neck edge, see the “Helpful Hint” on next page. Turn top ends of zip tapes under and sew in place. Stitch centre back seam from lower edge to zip. Stitch centre back seam of lining, leaving slit open, 2 cm (3/4 in) longer than marked.



Lay front and back pieces right sides together and turn lining up. Stitch side seams of main fabric and lining as continuous seams. Press seam allowances open. Turn lining to inside again, turn edges under, and sew to zip tapes.

Press hem allowance of dress to inside and sew in place by hand. Turn lining hem allowance to inside and stitch so that lining is 2 cm (3/4 in) shorter than dress.



These special zippers come in various lengths. The zipper should be at least 2 cm (3/4 in) longer than the slit. It is sewn in place before the seam below the slit is stitched. A special presser foot is required to sew the zipper in place.

### **Sewing the zipper in place:**

Open the zipper and push the coil back with your thumbnail to reveal the seam marking between the tape and the coil. Place the open zipper right side down on the right fabric side of one slit edge.

In order to stitch the zipper in place exactly along the marked seam line, you must first calculate the distance between the tape edge and the fabric edge as follows: width of seam allowance minus 1 cm (3/8 in) tape width = distance from edge of fabric. This will yield a value of 5 mm (3/16 in) if the width of the seam allowance is 1.5 cm (5/8 in).

Pin the top end of the zipper tape in place, the calculated distance from the edge of the fabric. The bottom end of the zipper will extend past the marked end of the slit. Place the presser foot on the zipper so that the coil is in the notch to the right of the needle (1). Stitch zipper in place, from the top to the marked end of the slit. Close zipper.

Place the other zipper tape face down on the opposite slit edge and pin in place at the top. Open zipper again. Place the presser foot on the top end of the zipper so that the coil is in the notch to the left of the needle (2). Sew the zipper in place, from the top to the end of the slit. Close zipper.

Now stitch the seam below the zipper, from bottom to top. Turn the loose lower end of the zipper out of the way, over the seam allowance. Stitch as close as possible to the last stitches of the zipper seams. Trim away excess zipper and bind the end with a scrap of fabric.