

120 Leather Bolero

Sizes 17, 18, 19, 20, 21

Back length approx. 30 cm (12 ins)

Materials

Stretch nappa leather.

To make this style in size 18, you will need 2 leather skins with a total of approx. 15 sq. ft. (1 sq. ft. = 30 x 30 cm).

Jersey, as lining for front and back

width: 150 cm (59 ins)

length: 0.40 m (1/2 yd) for all sizes.

Stretch lining, for sleeves

width: 135 cm (53 ins)

length: 0.65 m (7/8 yd).

Vilene Bias Tape/ stay tape.

Textile adhesive (e. g. Rudolfix, Gütermann Klebenaht HT 2).

Recommended fabrics: Soft stretch leather or imitation leather.

Preparations

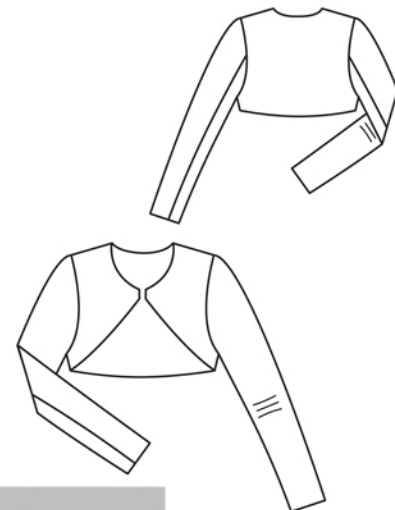
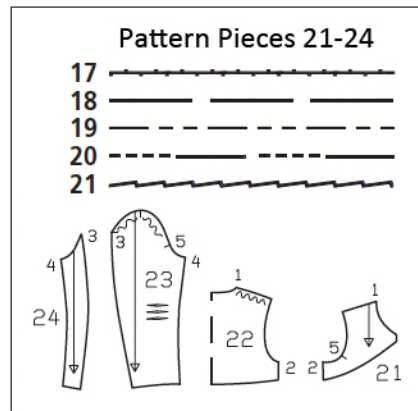
Print the pattern out on letter or A4 sized paper. It is **very important** to not scale or fit any of the pages, you must print the document in **actual size**. Your pattern will print on multiple pages, which you will then tile together. Arrange the sheets on a large, hard and flat surface matching up the numbers and letters (i.e. 6A to 6A). Cut or fold one of the sides and match the edge to it's corresponding side. Then, tape down in place so paper is secure.

Trace the pattern pieces from the pattern sheet following the lines and markings for your size.

burda style magazine patterns do not have seam allowance included.

To be added:

Seams and edges 1.5 cm (5/8 in), sleeve hems 4 cm (1 5/8 ins), lining 1.5 cm (5/8 in).



Cutting Out

Nappa leather:

21 front 2x

22 back, on a fold 1x

23 sleeve front 2x

24 sleeve back 2x

Jersey (lining): pieces 21 and 22.

Stretch lining: pieces 23 and 24.

Vilene Bias Tape/ stay tape; Iron to wrong side of front shoulder seam edges.

Sewing

Notes on working with leather (or imitation leather): We recommend first making the garment from inexpensive cotton. Then transfer any needed alterations to the paper pattern pieces before cutting out the leather pieces. Avoid basting leather and unpicking seams since holes left by the needle may be permanent. Press leather from the wrong side, under a pressing cloth. Use moderate heat and no steam. Test-iron a left-over piece of your leather first.

Stitch side and shoulder seams on bolero and lining. Press seams open. Pin lining right sides together with bolero. Stitch to hem edge, front edges, and neck edge. Trim seam allowances, trimming corners diagonally. Clip curves several times. Turn bolero right side out through one open armhole. Topstitch bolero close to all edges. Stitch lining to seam allowances of armhole edges.

Stitch darts in sleeves. Press darts up. Work from right side to topstitch close to dart seams. Turn sleeve hem allowances to inside and glue in place, within the fold, 2 cm (3/4 in) wide. Leave inside edge of hem allowance free, to stitch to lining. On sleeve linings, stitch darts and seams. Stitch lower edge of each sleeve lining to loose inside edge of sleeve hem allowance, right sides facing. Pull linings into sleeves.

Set in sleeves, easing sleeve caps and not catching sleeve linings. Turn edges of sleeve linings under and sew to sleeve attachment seams by hand.