

119 Coat

Sizes **72, 76, 80, 84, 88**

Back length approx. 100 cm (39 1/2 ins)

Materials

Fake lamb shearling (top side leather, opposite side wool),

width: 145 cm (57 ins)

length: 1.90 – 1.95 – 1.95 – 2.00 – 2.00 m

(2 1/8 – 2 1/4 – 2 1/4 – 2 1/4 2 1/4 yds).

3 large hooks and eyes.

Recommended fabrics: Imitation leather with fur/wool reverse side.

Preparations

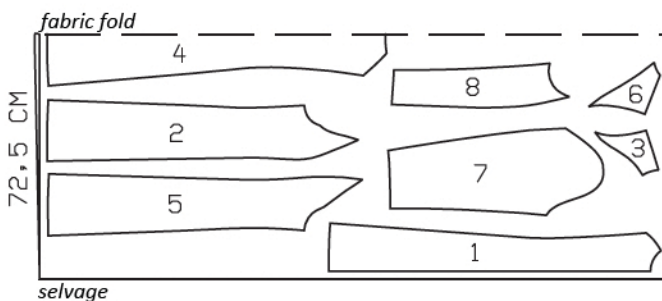
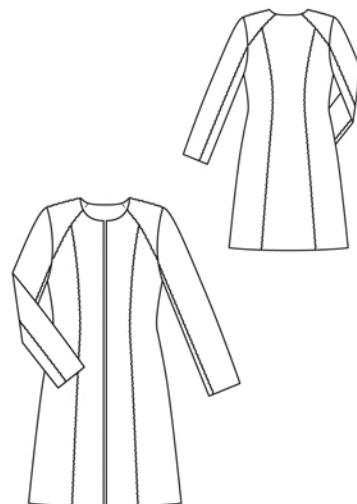
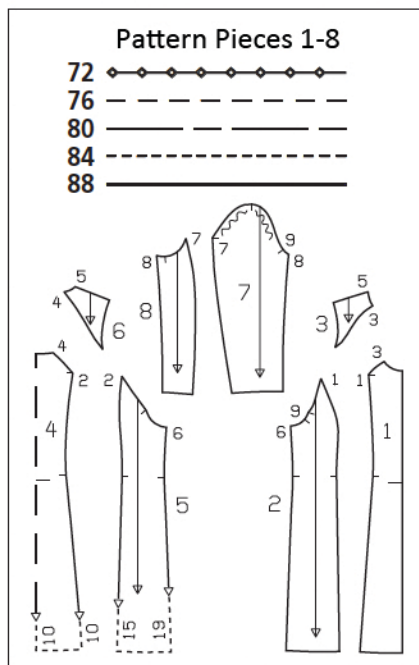
Print the pattern out on letter or A4 sized paper. It is **very important** to not scale or fit any of the pages, you must print the document in **actual size**. Your pattern will print on multiple pages, which you will then tile together. Arrange the sheets on a large, hard and flat surface matching up the numbers and letters (i.e. 6A to 6A). Cut or fold one of the sides and match the edge to it's corresponding side. Then, tape down in place so paper is secure.

Trace the pattern pieces from the pattern sheet following the lines and markings for your size.

burda style magazine patterns do not have seam allowance included.

To be added:

Seams 3 mm (1/8 in), armhole edges and sleeve caps 1 cm (3/8 in), no allowances on hem, front, and neck edges.



Cut from a double layer of fabric, "wool" side facing in.

Cutting Out

1 centre front	2x
2 side front	2x
3 front yoke	2x
4 centre back, on a fold	1x
5 side back	2x
6 back yoke	2x
7 upper sleeve	2x
8 under sleeve	2x

Sewing

Single-lapped seams: Lay edge of one piece on the other, with fur sides facing down. Stitch edges together, 3 mm (1/8 in) from upper edge, pushing the fur hairs to the outside.

Stitch front and back section seams. Stitch front yokes to fronts and back yokes to back. Stitch side seams, shoulder seams, and sleeve seams.

Set in sleeves, easing sleeve caps (leather side facing leather side).

Fasten front coat edges with 3 hooks and eyes: at corner of neck edge, at waist level, and centred in between. Sew hooks and eyes in place so that front coat edges meet when closed.

