

117 Skirt

Sizes 36, 38, 40, 42, 44

Skirt length 60 cm (233/4 ins).

Waistband attachment seam is 3 cm (1 1/4 ins) below waist.

Note: The pleated crêpe de chine piece is stitched to the front of the finished skirt. The side and upper edges of the pleated piece are not finished and can be allowed to fray slightly.

Materials

Ponte jersey,
width: 130 cm (51 ins)
length: 0.70 m (7/8 yd) for all sizes.

Crêpe de chine pleat (pleated piece),
width: 145 cm (57 ins)
length: 0.65 m (7/8 yd).

Lining,
width: 140 cm (55 ins)
length: 0.70 m (7/8 yd).

Vilene Bias Tape/ stay tape.

Petersham ribbon (for waistband), 2.5 cm (1 in)
wide: 1.60 – 1.65 – 1.75 – 1.85 – 1.90 m (1 3/4 – 17/8 – 2 – 2 1/8 – 2 1/8 yds) long.

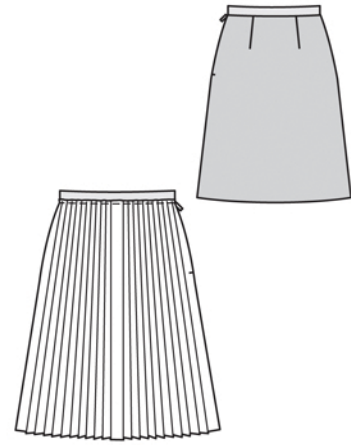
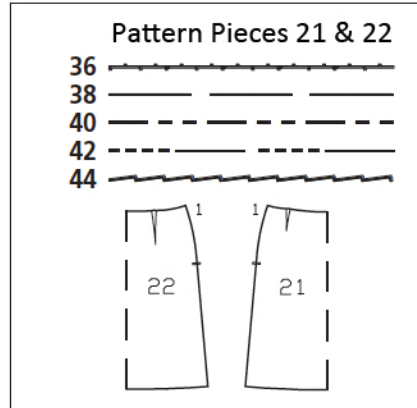
1 invisible zip, 22 cm (9 ins) long.

1 sew-on snap fastener.

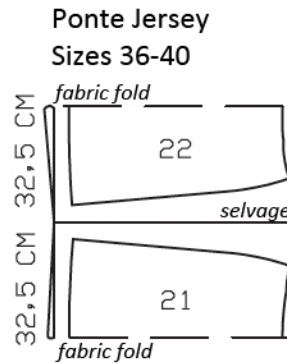
Recommended fabrics: Skirt fabrics with some body. For permanent pleats, use a lightweight fabric with a high synthetic content for the pleat piece.

Preparations

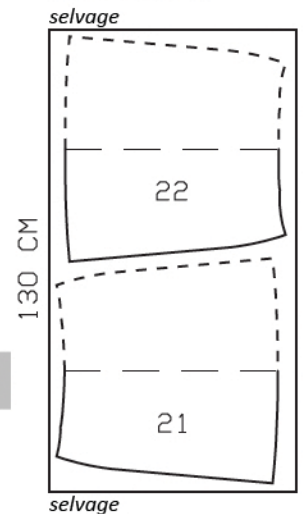
Print the pattern out on letter or A4 sized paper. It is **very important** to not scale or fit any of the pages, you must print the document in **actual size**. Your pattern will print on multiple pages, which you will then tile together. Arrange the sheets on a large, hard and flat surface matching up the numbers and letters (i.e. 6A to 6A). Cut or fold one of the sides and match the edge to it's corresponding side. Then, tape down in place so paper is secure.



Right side faces in on a double layer of fabric; right side faces up on a single layer of fabric.



Sizes 42 & 44



Cutting Out

Jersey:

21 front skirt panel, on a fold 1x

22 back skirt panel, on a fold 1x

Crêpe de chine:

Piece to be pleated, 145 cm (57 ins) wide, 65 cm (25 3/4 ins) long (incl. hem allowance).

Lining: pieces 21 and 22.

Vilene Bias Tape/ stay tape: Iron to wrong side of zip slit edges on skirt pieces and to wrong side of upper edge of lining.

Pleated piece:

Neaten lower edge of fabric panel, press to inside 3 cm (1 1/4 ins) wide, and sew in place by hand. Have fabric panel pleated commercially: triple pleats with a box pleat at centre, pleat width 2 cm (3/4 in).

Trace the pattern pieces from the pattern sheet following the lines and markings for the correct size and the correct style (117). This pattern also includes pattern pieces, lines and markings for style 115 and 116 that should be ignored.

burda style magazine patterns do not have seam allowance included.

To be added:

Seams and edges 1.5 cm (5/8 in), hem 4 cm (15/8 ins), lining 1.5 cm (5/8 in).

Sewing

Stitch front and back darts. Press darts toward centre.

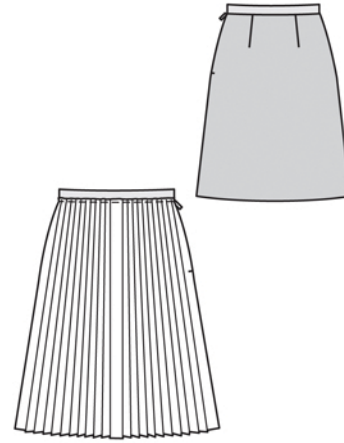
Sew invisible zip to left slit edges, see the “Helpful Hint”. Stitch left side seam from lower edge to zip. Press seam allowances open.

Stitch right side seam. Stitch darts and seams of lining, leaving slit for zip open as mirror image of skirt. Pull lining into skirt with wrong sides facing. Baste upper edges together. Turn lining under at zip slit edges but do not yet sew in place.

Waistband: Turn one end of peter- sham ribbon under, approx. 1 cm (3/8 in) wide, and press. Measure and mark 77 – 81 – 85 – 89 – 93 cm (30 1/2 – 32 – 33 1/2 – 35 – 36 3/4 ins) from this end. Lay ribbon on inside of seam allowance on upper edge of skirt, with pressed- under end extending 3 cm (1 1/4 ins) past back slit edge and marking meeting front slit edge. Edgestitch lower edge of ribbon in place. Fold ribbon over front slit edge. Pin ribbon edges together on both sides of seam allowance of skirt. Turn in end of ribbon. Edgestitch ribbon edges together. Sew upper half of snap fastener to inside of left waistband end and sew lower half of snap to right end of waistband, to match.

Press hem allowance to inside and sew in place by hand. Hem lining so that it is approx. 2 cm (3/4 in) shorter than skirt. Turn lining up – it should not be caught when stitching pleat piece in place.

On pleated piece, trim away selvages. Lay pleated piece on skirt front, matching centres. Lower edge of pleated piece meets hem edge. At hip level (approx. 20 cm/ 8 ins below waistband attachment seam), lay pleats closed and pin pleated piece in place. Side edges of pleated piece meet side seam for size 36. For the other sizes, the pleated piece ends slightly before seam. Pin side edges along seam (or same distance from seam as at hip level).



On upper edge, overlap pleats slightly and baste to lower waistband edge – pleats open toward hem edge. Stitch side edges in place, approx. 5 mm (3/16 in) from edges. Turn lining down, turn in, and sew to zip tapes. Stitch upper edge of pleated piece in place, along line of waistband attachment seam.



These special zippers come in various lengths. The zipper should be at least 2 cm (3/4 in) longer than the slit. It is sewn in place before the seam below the slit is stitched. A special presser foot is required to sew the zipper in place.

Sewing the zipper in place:

Open the zipper and push the coil back with your thumbnail to reveal the seam marking between the tape and the coil. Place the open zipper right side down on the right fabric side of one slit edge.

In order to stitch the zipper in place exactly along the marked seam line, you must first calculate the distance between the tape edge and the fabric edge as follows: width of seam allowance minus 1 cm (3/8 in) tape width = distance from edge of fabric. This will yield a value of 5 mm (3/16 in) if the width of the seam allowance is 1.5 cm (5/8 in).

Pin the top end of the zipper tape in place, the calculated distance from the edge of the fabric. The bottom end of the zipper will extend past the marked end of the slit. Place the presser foot on the zipper so that the coil is in the notch to the right of the needle (1). Stitch zipper in place, from the top to the marked end of the slit. Close zipper.

Place the other zipper tape face down on the opposite slit edge and pin in place at the top. Open zipper again. Place the presser foot on the top end of the zipper so that the coil is in the notch to the left of the needle (2). Sew the zipper in place, from the top to the end of the slit. Close zipper.

Now stitch the seam below the zipper, from bottom to top. Turn the loose lower end of the zipper out of the way, over the seam allowance. Stitch as close as possible to the last stitches of the zipper seams. Trim away excess zipper and bind the end with a scrap of fabric.