

112 Blouse

Sizes 36, 38, 40, 42, 44

Back length approx. 73 cm (29 ins)

Materials

Satin with widthwise stretch,

width: 145 cm (57 ins)

length: 1.75 – 1.75 – 1.75 – 1.80 – 1.95 m
(2 – 2 – 2 – 2 – 2 1/4 ins).

Interfacing.

11 buttons.

Recommended fabrics: Blouse fabrics with or without elastane.

Preparations

Print the pattern out on letter or A4 sized paper. It is very important to not scale or fit any of the pages, you must print the document in actual size. Your pattern will print on multiple pages, which you will then tile together. Arrange the sheets on a large, hard and flat surface matching up the numbers and letters (i.e. 6A to 6A). Cut or fold one of the sides and match the edge to it's corresponding side. Then, tape down in place so paper is secure.

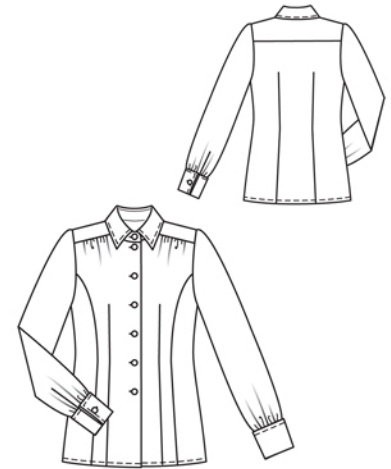
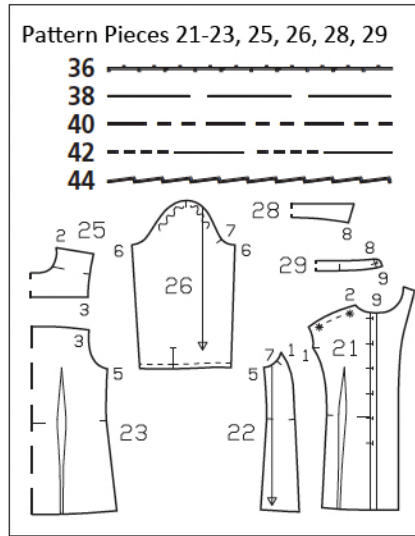
Trace the pattern pieces from the pattern sheet following the lines and markings for the correct size and the correct style (112). This pattern also includes pattern pieces, lines and markings for style 111, 113 & 114 that should be ignored.

The buttonholes on piece 21 are marked for size 36. For sizes 38 – 44, mark the top buttonhole the same distance from neck edge as for size 36. The bottom buttonhole is the same for all sizes. Space the other buttonholes evenly in between.

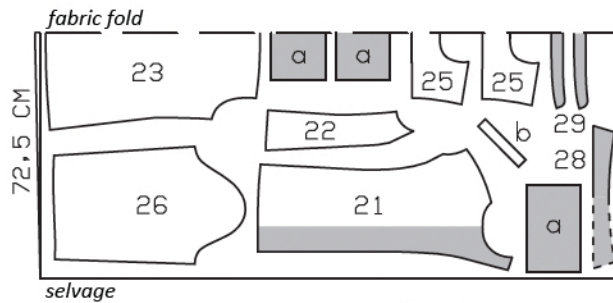
burda style magazine patterns do not have seam allowance included.

To be added:

Seams and edges 1.5 cm (5/8 in), hem 2 cm (3/4 in).



Sizes 36-42



Cut from a double layer of fabric, right side facing in.

Cutting Out

- | | |
|----------------------------|----|
| 21 centre front | 2x |
| 22 side front | 2x |
| 23 back, on a fold | 1x |
| 25 yoke, on a fold | 2x |
| 26 sleeve | 2x |
| 28 collar, on a fold | 2x |
| 29 collar stand, on a fold | 2x |



Draft the following pieces NOT included in the pattern:

- 4 cuff pieces, 25.5 – 26 – 26.5 – 27 – 27.5 cm (10 – 10 1/4 – 10 3/4 – 11 ins) long, 16 cm (6 1/2 ins) wide, turned up 8 cm (3 1/4 ins) wide,
- 2 bias binding strips for sleeve vents, 17 cm (6 3/4 ins) long, 3 cm (1 1/4 ins) wide (incl. allowances).

Interfacing: See shaded area on pattern layout.

Sewing

Stitch darts. Press darts toward centre. Stitch side fronts to centre fronts. Press seam allowances onto centre pieces. Gather upper front edges between asterisks.

Yoke: Pin yoke pieces to upper edge of back, pinning one yoke to outside and one to inside. Stitch yokes in place. Press yokes up. Stitch outer yoke right sides together with upper front edges. Turn under edges of inside yoke and sew to attachment seams. Baste yokes together along neck and armhole edges, not turning edges under.

Stitch side seams. Press hem allowance to inside, turn in, and stitch. Press front self-facings to inside, baste to neck edge, and sew to hem. Sew facings to inside yoke.

Collar with collar stand: Stitch collar pieces right sides together along outer edges. Trim seam allowances. Turn collar right side out and press. Topstitch 7 mm (1/4 in) from collar edges. Lay collar stand pieces right sides together, with collar in between. Stitch along front and upper collar stand edges, beginning and ending in front, exactly on seam line of attachment edge. Trim seam allowances. Turn collar stand right side out. Stitch outer collar stand piece to neck edge of blouse. Press seam allowances onto collar stand. Turn in inside collar stand piece and baste over attachment seam. Topstitch collar stand close to attachment seam.

Slash sleeve vents as marked. Spread cut edges open to a straight line and stitch to one long edge of binding strip, as narrowly as possible. Turn binding strip over attachment seam into vent, fold to a width of 7 mm (1/4 in), turn edge under, and sew to attachment seam. On inside, stitch diagonally across binding at top of vent. On edge of each vent, turn binding to inside and baste to lower sleeve edge. Stitch sleeve seams. Gather lower sleeve edges to match cuffs.



Cuffs: Stitch outer cuff pieces to lower sleeve edges. Press seam allowances onto cuffs. Press allowance on upper edge of inside cuff pieces to inside. Stitch inside cuff pieces to outer cuff pieces, along side and lower edges, right sides facing. Trim seam allowances. Turn cuffs right side out. Baste inside edges in place. Topstitch cuffs close to attachment seams. Topstitch 7 mm (1/4 in) from remaining cuff edges.

Set in sleeves, easing sleeve caps.

Work buttonholes in right front and in right end of collar stand. Work 2 buttonholes in both ends of each cuff – 4 cm and 12 cm (1 5/8 ins and 4 3/4 ins) below attachment seam. Turn lower cuff edges up, 8 cm (3 1/4 ins) wide, and press. Join 2 buttons each with a thread bar and button into cuffs.