

### 110A Trousers

Sizes 34, 36, 38, 40, 42

side length with waistband 96 cm (37 3/4 ins)

### Materials

#### Stretch nappa leather,

To make this style in size 36, you will need 3 leather skins with a total of approx. 24 sq. ft. (1 sq. ft. = 30 x 30 cm). Please ask your leather dealer for amount needed for larger sizes since leather skins can vary greatly. We recommend taking paper pattern with you when buying the leather.

#### Stretch lining,

width: 135 cm (53 ins)

length: 1.05 – 1.05 – 1.05 – 1.40 – 1.50 m

(1 1/4 – 1 1/4 – 1 1/4 – 1 5/8 – 1 3/4 yds).

#### Petersham ribbon (for waistband),

width: 2 cm (3/4 in)

length: 1.50 – 1.60 – 1.70 – 1.75 – 1.85 m

(1 3/4 – 1 3/4 – 1 7/8 – 2 – 2 1/8 yds).

1 invisible zip, 22 cm (9 ins) long.

1 sew-on snap fastener.

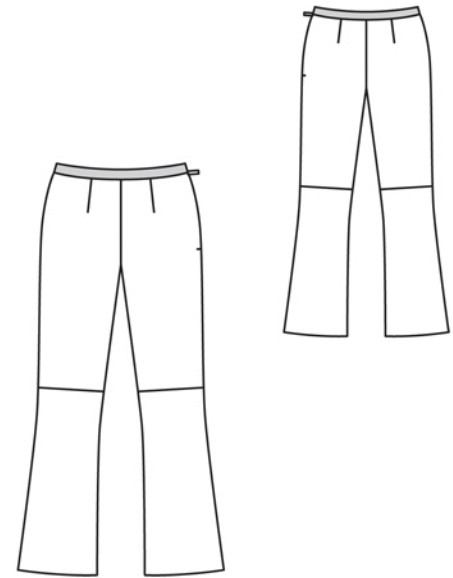
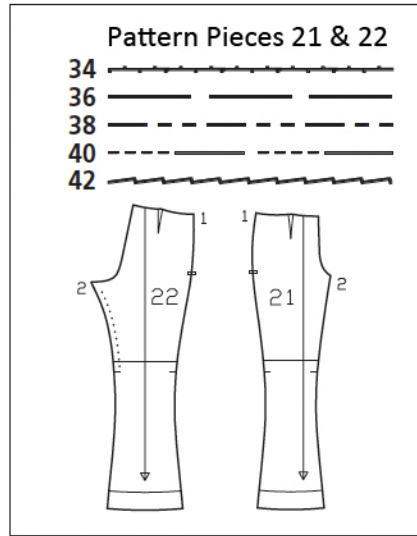
Textile adhesive.

**Recommended fabrics:** Trousers fabrics with width-wise or two-way stretch. Use only stretch leather or stretch fabrics or jersey.

### Preparations

Print the pattern out on letter or A4 sized paper. It is **very important** to not scale or fit any of the pages, you must print the document in **actual size**. Your pattern will print on multiple pages, which you will then tile together. Arrange the sheets on a large, hard and flat surface matching up the numbers and letters (i.e. 6A to 6A). Cut or fold one of the sides and match the edge to its corresponding side. Then, tape down in place so paper is secure.

Trace the pattern pieces from the pattern sheet following the lines and markings for your size. Cut pieces 21 and 22 apart on the marked seam line. Glue the paper pattern pieces together again to cut the lining.



### Cutting Out

#### Nappa leather:

21 front trouser pieces, each 2x

22 back trouser pieces, each 2x

#### Lining: pieces 21 and 22.

Glue the paper pattern pieces together again to cut the lining.

**burda style magazine patterns do not have seam allowance included.**

#### To be added:

Seams and edges 1.5 cm (5/8 in), hem 4 cm (1 5/8 ins). Cut lining pieces with 1.5 cm (5/8 in) seam and hem allowances.

## Sewing

Notes on working with leather (or imitation leather): We recommend first making the garment from inexpensive cotton. Then transfer any needed alterations to the paper pattern pieces before cutting out the leather pieces. Avoid basting leather and unpicking seams since holes left by the needle may be permanent. Press leather from the wrong side, under a pressing cloth. Use moderate heat and no steam. Test-iron a leftover piece of your leather first.

Stitch darts in front and back trouser pieces. Press darts toward centre. Stitch horizontal section seams on front and back trouser pieces. Press seam allowances open. Topstitch close to each side of seams.

On back trouser pieces, stretch inside leg seam edges above seam mark. Stretch seam edges: Lay back trouser pieces right sides together. Press inside leg edges above seam marks with a steam-iron or under a damp cloth to stretch them to match edges of front trouser pieces. Press leather under a dry pressing cloth.

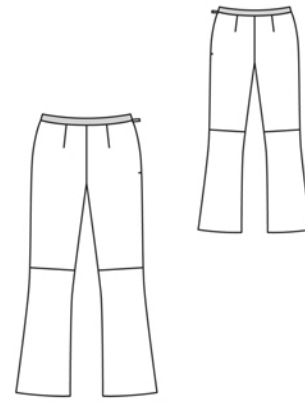
Sew invisible zip to left trouser pieces, see the "Helpful Hint" on next page. Stitch left side seam below zip.

Stitch right side seam and inside leg seams.

Pull one trouser leg over the other, with right sides facing. Stitch centre front and back seam as continuous seam. Press seam allowances open from upper edge to beginning of crotch curve. Do not press seam allowances open along curve.

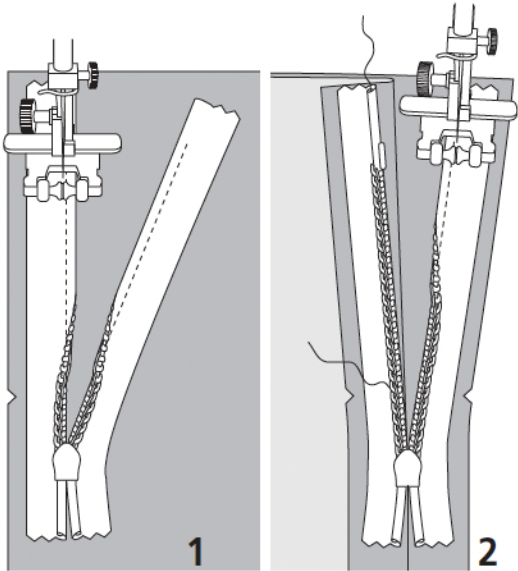
Stitch darts and seams of lining, leaving slit for zip open as mirror image of trousers. Pull lining into trousers, with wrong sides facing. Turn lining edge under and sew to zip tapes. Stitch lining to seam allowance of upper trousers edge.

Waistband: Turn one end of petersham ribbon under, approx. 1 cm (3/8 in) wide, and press. Measure and mark 74 – 78 – 82 – 86 – 90 cm



(29 1/4 – 30 3/4 – 32 1/2 – 34 – 35 1/2 ins) from this end. Lay petersham ribbon on inside of seam allowance on upper trousers edge so that pressed-under end extends 2 cm (3/4 in) past back slit edge and marking meets front slit edge. Edgestitch lower edge of ribbon in place. Fold ribbon over front slit edge to inside. Pin ribbon edges together, catching seam allowance of trousers in between. Turn in end of petersham ribbon. Edgestitch ribbon edges together. Fasten waistband with the snap.

Turn hem allowances to inside and glue down (textile adhesive). Turn lining hem allowances to inside, turn edges under, and stitch so that lining is 2 cm (3/4 in) shorter than trousers.



These special zippers come in various lengths. The zipper should be at least 2 cm (3/4 in) longer than the slit. It is sewn in place before the seam below the slit is stitched. A special presser foot is required to sew the zipper in place.

### **Sewing the zipper in place:**

Open the zipper and push the coil back with your thumbnail to reveal the seam marking between the tape and the coil. Place the open zipper right side down on the right fabric side of one slit edge.

In order to stitch the zipper in place exactly along the marked seam line, you must first calculate the distance between the tape edge and the fabric edge as follows: width of seam allowance minus 1 cm (3/8 in) tape width = distance from edge of fabric. This will yield a value of 5 mm (3/16 in) if the width of the seam allowance is 1.5 cm (5/8 in).

Pin the top end of the zipper tape in place, the calculated distance from the edge of the fabric. The bottom end of the zipper will extend past the marked end of the slit. Place the presser foot on the zipper so that the coil is in the notch to the right of the needle (1). Stitch zipper in place, from the top to the marked end of the slit. Close zipper.

Place the other zipper tape face down on the opposite slit edge and pin in place at the top. Open zipper again. Place the presser foot on the top end of the zipper so that the coil is in the notch to the left of the needle (2). Sew the zipper in place, from the top to the end of the slit. Close zipper.

Now stitch the seam below the zipper, from bottom to top. Turn the loose lower end of the zipper out of the way, over the seam allowance. Stitch as close as possible to the last stitches of the zipper seams. Trim away excess zipper and bind the end with a scrap of fabric.