

131 Skirt

Sizes 36, 38, 40, 42, 44

Skirt length (incl. waistband) 80 cm (31 1/2 ins)

Upper edge of waistband = waist

Materials

Flannel,

width: 150 cm (59 in)

length: 1.40 – 1.40 – 1.40 – 1.70 – 1.70 m

(1 5/8 – 1 5/8 – 1 5/8 – 1 7/8 – 1 7/8 yds).

Lining,

width: 140 cm (55 in)

length: 0.85 m (1 yd) for all sizes.

Interfacing.

1 invisible zipper, 22 cm (9 ins) long.

1 button.

Recommended fabrics: Skirt fabrics.

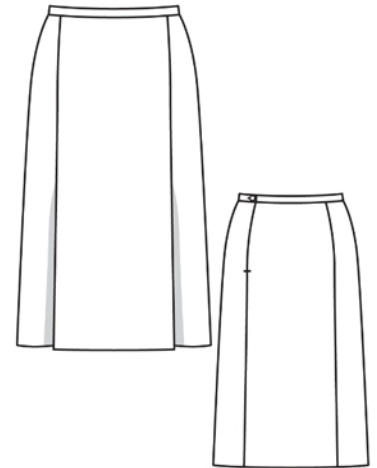
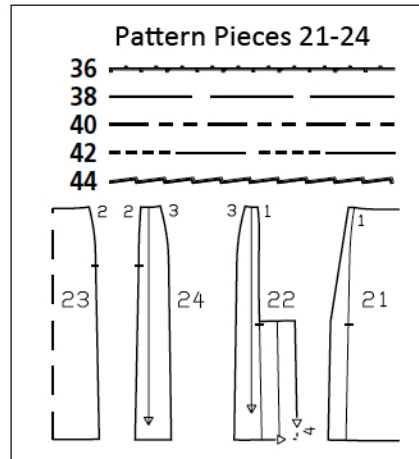
Preparations

Print the pattern out on letter or A4 sized paper. It is **very important** to not scale or fit any of the pages, you must print the document in **actual size**. Your pattern will print on multiple pages, which you will then tile together. Arrange the sheets on a large, hard and flat surface matching up the numbers and letters (i.e. 6A to 6A). Cut or fold one of the sides and match the edge to it's corresponding side. Then, tape down in place so paper is secure.

burda style magazine patterns do not have seam allowance included.

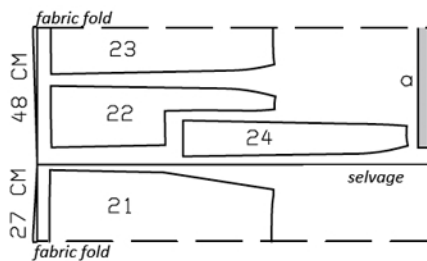
To be added:

Seams and edges 1.5 cm (5/8 in),
hem 4 cm (1 5/8 ins), lining 1.5 cm (5/8 in).

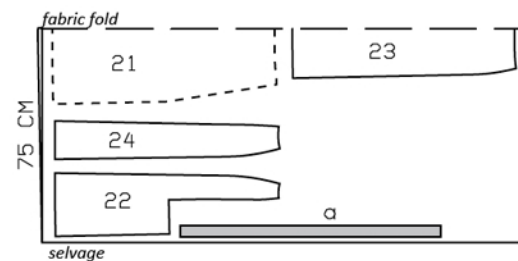


Flannel, 150cm wide

Sizes 36-40



Sizes 42, 44



Fold the fabric as shown in the pattern layout, right side facing in.

Cutting Out

Flannel:

- 21 centre front skirt panel, on a fold 1x
- 22 side front skirt panel 2x
- 23 centre back skirt panel, on a fold 1x
- 24 side back skirt panel 2x

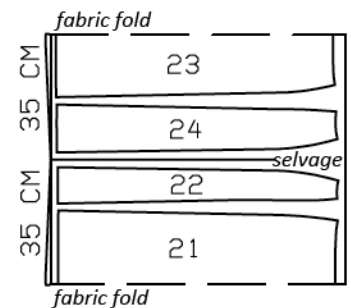
Draft the following pieces NOT included in the pattern:

- a) waistband with 3 cm (1 1/4 in) underlap, 75.5 – 79.5 – 83.5 – 87.5 – 91.5 cm (29 7/8 – 31 3/8 – 32 7/8 – 34 1/2 – 36 1/8 ins) long, 4 cm (1 1/2 ins) wide, finished width 2 cm (3/4 in).

Lining: pieces 21 and 22, without vent allowances, and also pieces 23 and 24.

Interfacing: Iron to waistband piece.

Lining, 140cm wide



Sewing

Stitch front section seams, leaving vents open. Press allowances toward centre front. Press edges of vents. Press underlap facings to inside.

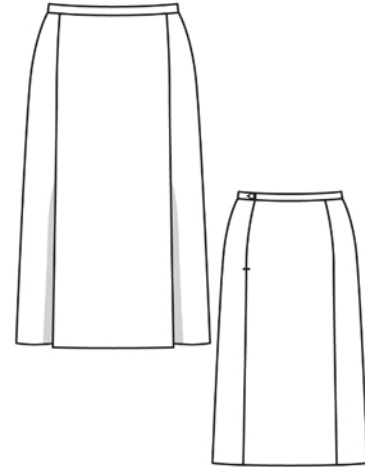
Stitch right back section seam. Sew invisible zip to opening edges of left back section seam, see the "Helpful Hint" on next page. Stitch left back section seam from lower edge to invisible zip. Stitch side seams. Press seam allowances open.

Stitch seams of skirt lining panels, leaving slits open and leaving slit for zip open as mirror image of skirt. Place lining inside skirt, with wrong sides facing. Turn edges under and sew to zip tapes. Baste lining to upper skirt edge, without turning in.

Stitch waistband to upper skirt edge, leaving waistband underlap extending on right back edge of opening. Press allowances of joining seam onto waistband. Fold waistband lengthwise, right side facing in. Stitch across left back end. On the right, at the underlap, turn allowances of joining seam down again. Stitch along lower edge of underlap and right end of waistband. Turn waistband right side out. Turn inside edge of waistband under and baste over joining seam. Stitch from right side, along line of seam. Work buttonhole in left back end of waistband.

Unfold facings at hem. Press hem allowance to inside and sew in place by hand. Turn facings to inside again and sew in place, over hem. Work from inside to stitch horizontally across facing and underlap, at top of vent.

Hem lining so that it is 2 cm (3/4 in) shorter than skirt. At front slit edges, sew lining to inside edge of underlap facing. Cut out a rectangle in other edge of lining, up to 1 cm (3/8 in) from fold edge of vent underlap and to 1 cm (3/8 in) above end of vent at the top. Clip diagonally into corner, approx. 1 cm (3/8 in) long. Turn lining edge under. Stitch to inside edge of vent facing and stitch top to underlap, horizontally.





These special zippers come in various lengths. The zipper should be at least 2 cm (3/4 in) longer than the slit. It is sewn in place before the seam below the slit is stitched. A special presser foot is required to sew the zipper in place.

Sewing the zipper in place:

Open the zipper and push the coil back with your thumbnail to reveal the seam marking between the tape and the coil. Place the open zipper right side down on the right fabric side of one slit edge.

In order to stitch the zipper in place exactly along the marked seam line, you must first calculate the distance between the tape edge and the fabric edge as follows: width of seam allowance minus 1 cm (3/8 in) tape width = distance from edge of fabric. This will yield a value of 5 mm (3/16 in) if the width of the seam allowance is 1.5 cm (5/8 in).

Pin the top end of the zipper tape in place, the calculated distance from the edge of the fabric. The bottom end of the zipper will extend past the marked end of the slit. Place the presser foot on the zipper so that the coil is in the notch to the right of the needle (1). Stitch zipper in place, from the top to the marked end of the slit. Close zipper.

Place the other zipper tape face down on the opposite slit edge and pin in place at the top. Open zipper again. Place the presser foot on the top end of the zipper so that the coil is in the notch to the left of the needle (2). Sew the zipper in place, from the top to the end of the slit. Close zipper.

Now stitch the seam below the zipper, from bottom to top. Turn the loose lower end of the zipper out of the way, over the seam allowance. Stitch as close as possible to the last stitches of the zipper seams. Trim away excess zipper and bind the end with a scrap of fabric.