

117 Jacket

Sizes 36, 38, 40, 42, 44

Back length 73 cm (29 ins)

Materials

Fine jersey,
width: 150 cm (59 in)
length: 1.65 – 1.65 – 1.65 – 1.80 – 1.80 m
(1 7/8 – 1 7/8 – 1 7/8 – 2 – 2 yds).

A twin sewing machine needle.

Recommended fabrics: Lightweight wools, jersey, knits. Use only fabrics with two "good" sides.

Preparations

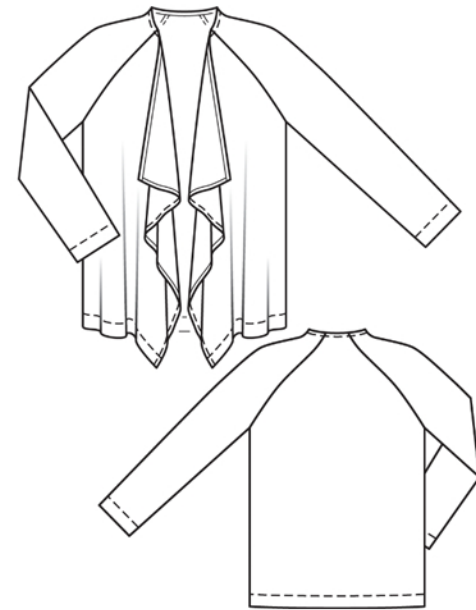
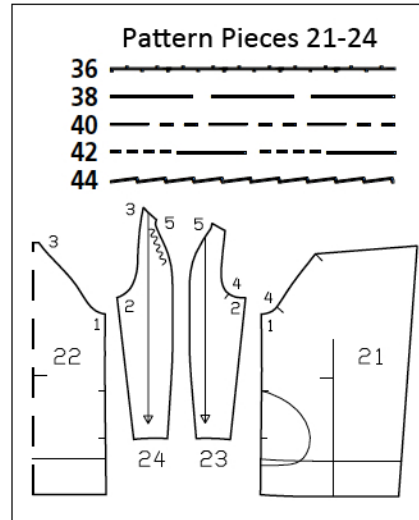
Print the pattern out on letter or A4 sized paper. It is **very important** to not scale or fit any of the pages, you must print the document in **actual size**. Your pattern will print on multiple pages, which you will then tile together. Arrange the sheets on a large, hard and flat surface matching up the numbers and letters (i.e. 6A to 6A). Cut or fold one of the sides and match the edge to it's corresponding side. Then, tape down in place so paper is secure.

Trace the pattern pieces from the pattern sheet following the lines and markings for the correct size and the correct style (117 AB). This pattern also includes pattern pieces, lines and markings for style 117 CD that should be ignored.

burda style magazine patterns do not have seam allowance included.

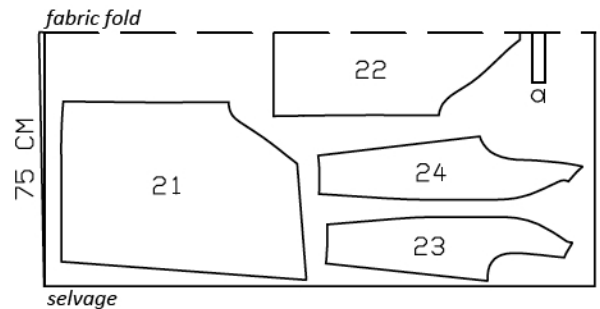
To be added:

Seams and edges 1.5 cm (5/8 in),
sleeve hems 4 cm (1 5/8 ins) (flare sleeve hem allowance)

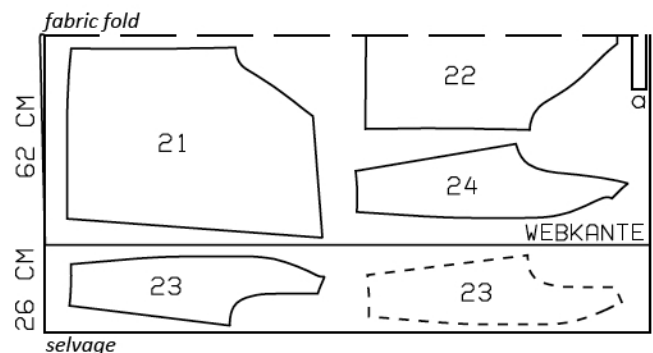


Fold the fabric as shown in the pattern layout. Right side faces in on a double layer of fabric. Right side faces up on a single layer of fabric. Cut right and left sleeves as opposites.

Sizes 36-40



Sizes 42, 44



Cutting Out

21 front	2x
22 back, on a fold	1x
23 sleeve front	2x
24 sleeve back	2x

Draft the following piece NOT included in the pattern:

a) facing strip for neck edge, 35 cm (13 3/4 ins) long, 4 cm (1 5/8 ins) wide (incl. allowances).

Sewing

Note: Stitch seams on stretch fabrics with a special stretch or at a narrow zigzag stitch setting. Stitch hems with a twin sewing machine needle to keep them elastic.

Stitch side seams, right sides together. Neaten the seam allowances together and press onto front. Press hem allowance to inside. Use the twin needle to stitch from the right side, 3.5 cm (1 1/2 ins) from fold edge.

Press allowances on front and upper edges of front pieces to inside, turn in and stitch 7 mm (1/4 in) from edge.

Stitch lower sleeve seams, right sides together. Neaten seam allowances together and press onto fronts. Stitch sleeves to fronts and to back (seam numbers 3 and 4) – seam allowance of sleeve extends at upper front edge. Press seam allowances toward sleeves, from neck edge to beginning of underarm curve. Stitch shoulder seams (seam number 5) and top sleeve seams as continuous seams. Press sleeve hem allowances to inside and stitch with twin machine needle.

Fold facing strip for neck edge lengthwise, right side facing out. Press. Pin folded strip to neck edge so that fold edge of strip lies on garment piece, 1 cm (3/8 in) past seam line. Stitch along neck edge. Trim seam allowances. Turn facing strip up and turn ends in. Turn facing strip to inside. Press edge. Topstitch 7 mm (1/4 in) from neck edge.

