

### 109 Blouse

Sizes 36, 38, 40, 42, 44

Back length approx. 73 cm (28 3/4 ins)

### Materials

Crêpe satin,

width: 140 cm (55 in)

length: 1.50 – 1.50 – 1.50 – 1.55 – 1.55 m  
(1 3/4 yds).

A small piece of organza.

7 small, flat buttons.

**Recommended fabrics:** Lightweight, softly draping blouse fabrics. Use only fabrics with two “good” sides – one shiny side and one matte side.

Preparation:

### Preparations

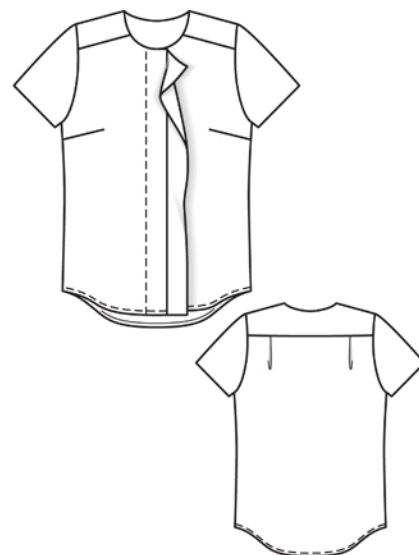
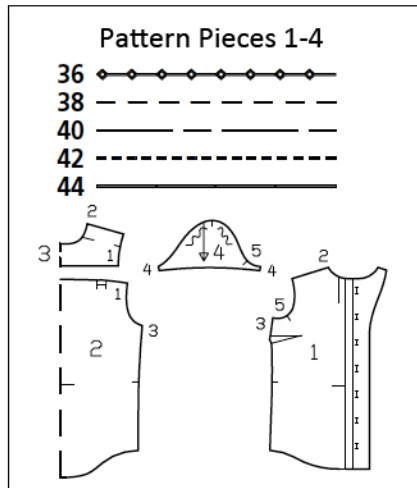
Print the pattern out on letter or A4 sized paper. It is **very** important to not scale or fit any of the pages, you must print the document in **actual size**. Your pattern will print on multiple pages, which you will then tile together. Arrange the sheets on a large, hard and flat surface matching up the numbers and letters (i.e. 6A to 6A). Cut or fold one of the sides and match the edge to it’s corresponding side. Then, tape down in place so paper is secure.

Trace the pattern pieces from the pattern sheet following the lines and markings for the correct size and the correct style (109). This pattern also includes pattern pieces, lines and markings for style 110 and 111 that should be ignored. For size 36. For sizes 38 – 44, mark the top buttonhole the same distance from neck edge as for size 36. The bottom buttonhole is the same for all sizes. Space the other buttonholes evenly in between.

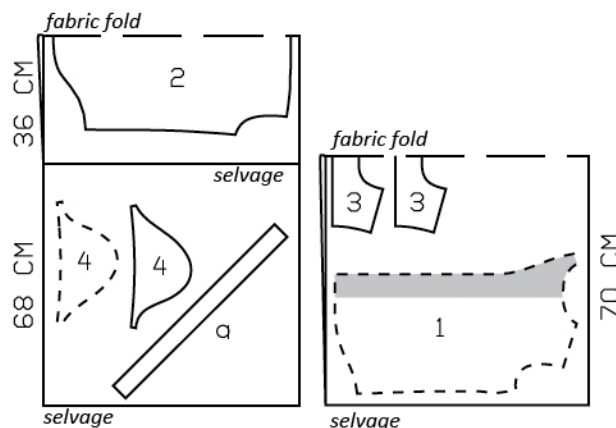
**burda style magazine patterns do not have seam allowance included.**

To be added:

Seams, edges and hem 1.5 cm (5/8 in), sleeve hems 2 cm (3/4 in), on joining edge of flounce 1.5 cm (5/8 in), and cut remaining flounce edges without allowances.



Fold the fabric as shown in the pattern layout. Right side faces in on a double layer of fabric. Right side faces up on a single layer. Cut right and left sleeves as opposites.



### Cutting Out

1 front	2x
2 back, on a fold	1x
3 yoke, on a fold	2x
4 sleeve	2x

Draft the following piece NOT included in the instructions

a) front flounce, cut on bias, 63 – 64 – 65 – 66 – 66.5 cm (24 3/4 – 25 1/4 – 25 3/4 – 26 – 26 1/4 ins) long, 5 cm (2 ins) wide.

## Sewing

Stitch bust darts. Press darts down. Fold pleats in back piece in direction of arrows and baste.

Stitch side seams, right sides together. Neaten seam allowances together and press onto back. Turn hem allowance to inside, turn raw edge under to half width, press, and stitch hem in place.

Work buttonholes in right self-facing, backing buttonholes with organza. Carefully trim organza close to stitching of finished buttonhole.

Lay the flounce piece right sides together with the right front so that seam allowance lies on facing. Seam allowance of neck edge extends at upper edge. Stitch the flounce in place along facing fold line. Turn in seam allowance of flounce and stitch to front facing.

On both fronts, turn self-facing to outside and stitch to neck edge. Trim seam allowances, trimming corners diagonally. Turn facings to inside and turn flounce forward. Baste top ends of facing in place. Sew facings to hem edge. Topstitch right front edge as marked.

Stitch one yoke piece to fronts and to back. Press seam allowances onto yoke. Press allowances on lower edges of second (inside) yoke to wrong side. Lay inside yoke right sides together with attached yoke. Stitch along neck edge. Trim seam allowances and clip curves several times. Turn yoke right side out and press edge. Baste inside yoke to joining seams. Topstitch yoke close to joining seams. Baste edges of armholes together, without turning under.

Stitch sleeve seams, right sides together. Press sleeve hem allowances to inside and sew in place by hand.

Set in sleeves, easing sleeve caps.

