

### 104 Top

Sizes 34, 36, 38, 40, 42

Length from waist 31 cm (12 1/4 ins)

### Materials

Crêpe satin with crosswise stretch,  
width: 140 cm (55 in)  
length: 1.05 – 1.05 – 1.05 – 1.10 – 1.10 m  
(1 1/4 yds).

1 invisible zipper, 40 cm (16 ins) long

**Recommended fabrics:** Lightweight, softly draping fabrics.

### Preparations

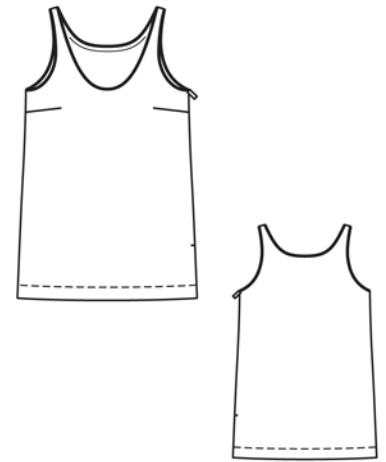
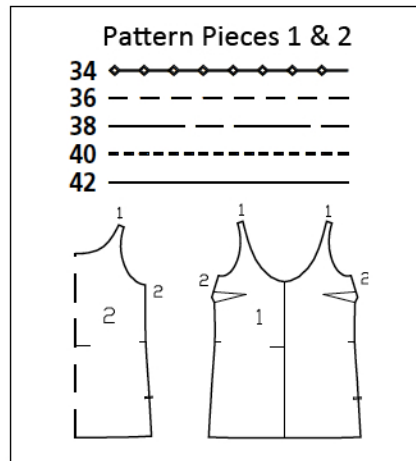
Print the pattern out on letter or A4 sized paper. It is **very important** to not scale or fit any of the pages, you must print the document in **actual size**. Your pattern will print on multiple pages, which you will then tile together. Arrange the sheets on a large, hard and flat surface matching up the numbers and letters (i.e. 6A to 6A). Cut or fold one of the sides and match the edge to it's corresponding side. Then, tape down in place so paper is secure.

Trace the pattern pieces from the pattern sheet following the lines and markings for the correct size and the correct style (104). This pattern also includes pattern pieces, lines and markings for style 105 and 106 that should be ignored.

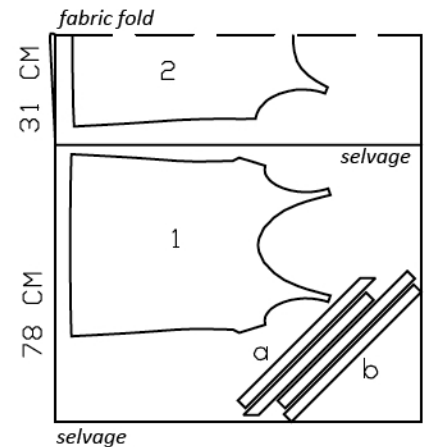
**burda style magazine patterns do not have seam allowance included.**

To be added:

Seams and edges 1.5 cm (5/8 in),  
hem 4 cm (1 5/8 ins).



Fold the fabric as shown in the pattern layout. Right side faces in on a double layer of fabric. Right side faces up on a single layer of fabric. Use fabric with a width of 140cm.



### Cutting Out

1 front 1x  
2 back, on a fold 1x

Draft the following pieces NOT included in the pattern:

a) bias strip for neck edge, a total of 91 – 92 – 94 – 96 – 98 cm (36 – 36 1/4 – 37 – 37 3/4 – 38 3/4 ins) long, 3 cm (1 1/4 ins) wide (incl. allowances),

b) 2 bias strips for armholes, 45 – 47 – 48 – 50 – 52 cm (17 3/4 – 18 1/2 – 19 – 19 3/4 – 20 1/2 ins) long, 3 cm (1 1/4 ins) wide (incl. allowances).

## Sewing

Stitch bust darts. Press darts down.

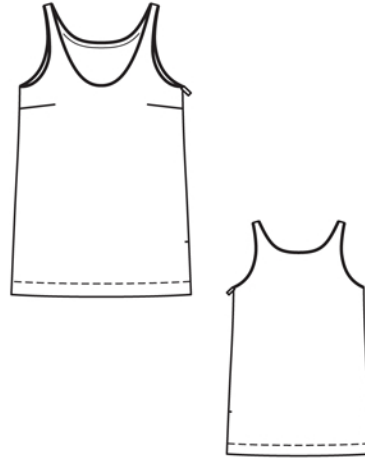
Stitch right shoulder seam, right sides together.

Fold bias strip for neck edge lengthwise and press, right side facing out. Pin folded bias strip to neck edge so that fold edge of strip lies on garment piece, 3 mm (1/8 in) past seam line. Stitch along neck edge. Turn bias strip to inside so that it extends past neck edge, 3 mm (1/8 in) wide. Topstitch close to neck edge.

Stitch left shoulder seams. Sew ends of seam allowances to neck edge.

Face armhole edges with bias strips as for neck edge. Stitch right side seam. Neaten seam allowances together and press onto back. Sew top ends of seam allowances in place. Sew invisible zip to left opening edges, see the "Helpful Hint" on next page. Stitch left side seam from lower edge to zip. Turn in top ends of zip tapes and sew to edges of armholes, together with seam allowances.

Turn hem allowance to inside and turn raw edge under. Stitch 3 cm (1 1/4 ins) from lower edge, catching the hem.





These special zippers come in various lengths. The zipper should be at least 2 cm (3/4 in) longer than the slit. It is sewn in place before the seam below the slit is stitched. A special presser foot is required to sew the zipper in place.

### **Sewing the zipper in place:**

Open the zipper and push the coil back with your thumbnail to reveal the seam marking between the tape and the coil. Place the open zipper right side down on the right fabric side of one slit edge.

In order to stitch the zipper in place exactly along the marked seam line, you must first calculate the distance between the tape edge and the fabric edge as follows: width of seam allowance minus 1 cm (3/8 in) tape width = distance from edge of fabric. This will yield a value of 5 mm (3/16 in) if the width of the seam allowance is 1.5 cm (5/8 in).

Pin the top end of the zipper tape in place, the calculated distance from the edge of the fabric. The bottom end of the zipper will extend past the marked end of the slit. Place the presser foot on the zipper so that the coil is in the notch to the right of the needle (1). Stitch zipper in place, from the top to the marked end of the slit. Close zipper.

Place the other zipper tape face down on the opposite slit edge and pin in place at the top. Open zipper again. Place the presser foot on the top end of the zipper so that the coil is in the notch to the left of the needle (2). Sew the zipper in place, from the top to the end of the slit. Close zipper.

Now stitch the seam below the zipper, from bottom to top. Turn the loose lower end of the zipper out of the way, over the seam allowance. Stitch as close as possible to the last stitches of the zipper seams. Trim away excess zipper and bind the end with a scrap of fabric.