

136 Waistcoat

Sizes 36, 38, 40, 42, 44

Back length approx. 60 cm (24 ins)

Materials

Twill weave bouclé,

width: 150 cm (59 ins)

length: 1.00 – 1.00 – 1.00 – 1.05 – 1.05 m

(1 1/8 – 1 1/8 – 1 1/8 – 1 1/4 – 1 1/4 yds).

Satin, as contrasting fabric

width: 140 cm (55 ins)

length: 0.20 m (1/4 yd) for all sizes.

Lining,

width: 140 cm (55 ins)

length: 0.70 m (7/8 yd).

Interfacing and shoulder pads.

Recommended fabrics: Wools or blends. Satin as contrasting fabric.

Preparations

Print the pattern out on letter or A4 sized paper. It is **very** important to not scale or fit any of the pages, you must print the document in **actual size**. Your pattern will print on multiple pages, which you will then tile together. Arrange the sheets on a large, hard and flat surface matching up the numbers and letters (i.e. 6A to 6A). Cut or fold one of the sides and match the edge to it's corresponding side. Then, tape down in place so paper is secure.

Trace the pattern pieces from the pattern sheet following the lines and markings for the correct size and the correct style (136). This pattern also includes pattern pieces, lines and markings for style 137 that should be ignored. Cut the front facing apart on the marked seam line.

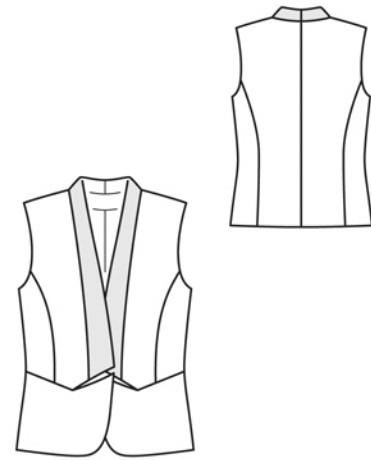
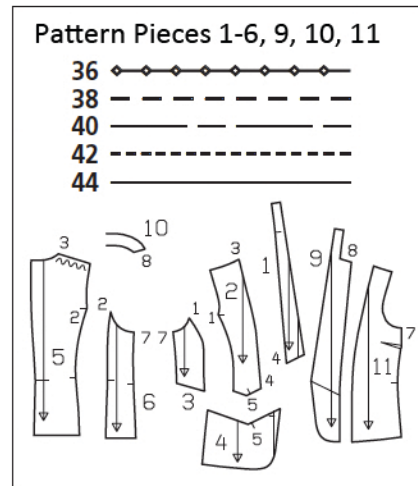
burda style magazine patterns do not have seam allowance included.

To be added:

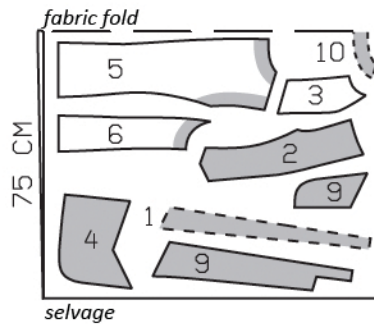
Seams and edges 1.5 cm (5/8 in),

hem 4 cm (1 5/8 ins), lining 1.5 cm

(5/8 in).



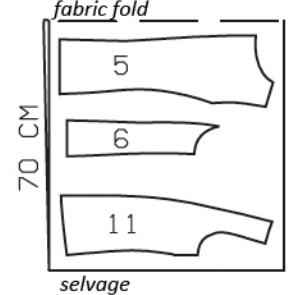
Bouclé,
150cm wide



Satin,
140cm wide



Lining,
140cm wide



Cut from a double layer of fabric, right side facing in. To make more economical use of the fabric, cut the satin bands on width-wise grain. Use the indicated fabric widths.

Cutting Out

Bouclé:

front band with collar	2x
upper centre front	2x
upper side front	2x
lower front	2x
centre back	2x
side back	2x
front facing with collar, divided each	2x
10 back facing, on a fold	1x

Satin (contrasting fabric):

front band with collar 2x

Lining:

11 front lining 2x

piece 5 minus width of facing and also piece 6.

Interfacing: See shaded area on pattern layout. Also interface back hem allowance.

Sewing

Stitch upper side fronts to upper centre front. Press seams open. Stitch upper fronts to lower fronts, from seam mark (seam number 5). Clip seam allowances of lower fronts into corners. Press seams open.

Stitch centre back seam, back section seams, and shoulder seams, right sides together.

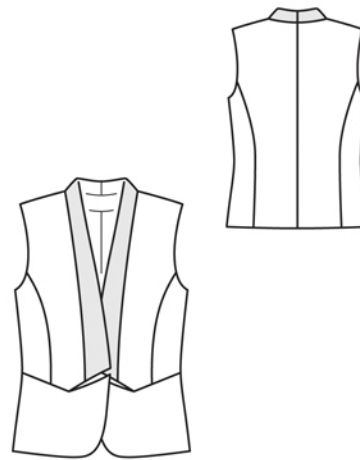
On attached collar sections of front band and facing pieces, stitch centre back seam. Baste satin band to bouclé band, with wrong side facing right side and treat these pieces as one layer of fabric from now on. Stitch band to the vertical edges of front pieces (seam number 4) then stitch collar to back neck edge. Clip allowances several times along the curves. Press seam open.

Stitch the back facing to the shoulder edges of the upper front facings and to the collar, clipping seam allowances into corners. Press the seam allowances open. Pin the upper front facings right sides together with the waistcoat and pin the collar edges together. Beginning at seam mark (seam number 5), stitch along lower edges of upper fronts and continue along lower band edges, front edges, and collar edges. Trim seam allowances, trimming corners diagonally. Turn facings to inside. Turn collar right side out. Press edges.

Pin the collar joining seams together exactly. Turn back facing up and stitch seam allowances together, close to collar attachment seam. Turn facing down.

Pin lower front facing pieces right sides together with lower fronts. Beginning at seam mark, stitch along upper edges of lower fronts, front edges and along hem edges, to facing end. Trim seam allowances, trimming corners diagonally. Turn facings to inside. Sew remaining horizontal edges of facings together by hand.

Stitch darts, centre back seam, section seams, and shoulder seams of lining, right sides together.



Stitch lining right sides together with inside facing edge, leaving approx. 8 cm (3 1/4 ins) open at bottom. Press seam allowances onto lining. Lay lining right sides together with waistcoat again and pin armhole edges together. Stitch along armhole edges. Trim seam allowances. Clip curves several times. To turn waistcoat right side out, pull fronts into through shoulder "tunnels".

Lay fronts right sides together with back, turning lining up. Stitch side seams of main fabric and lining as continuous seams. Turn lining down again.

Press hem allowance to inside and sew in place by hand. Sew facings to hem allowance.

Pin a fold approx. 1 cm (3/8 in) deep, in lining, above hem of waistcoat. Turn lining edge under and sew to hem allowance by hand. Lay extra length of lining down and press. Sew remaining front lining edges in place.

Cover shoulder pads with lining. Sew shoulder pads in place.