

128 Blouse

Sizes 34, 36, 38, 40, 42

Back length approx. 68 cm (27 ins)

Materials

Batiste,

width: 140 cm (55 ins)

length: 1.60 m (1 3/4 yds) for all sizes.

Lace trim with two scalloped edges,

width: 2.5 cm (1 in)

length: 2.40 – 2.45 – 2.50 – 2.55 – 2.60 m

(2 5/8 – 2 3/4 – 2 3/4 – 2 7/8 – 2 7/8 yds).

Lace trim with one scalloped edge,

width: 1.2 cm (1/2 in)

length: 3.40 – 3.50 – 3.60 – 3.70 – 3.75 m

(3 3/4 – 3 7/8 – 4 – 4 1/8 – 4 1/4 yds).

Elastic, 7 mm (1/4 in) wide and 0.75 – 0.80 – 0.80 –

0.85 – 0.85 m (7/8 – 7/8 – 7/8 – 1 – 1 yd) long.

9 small buttons.

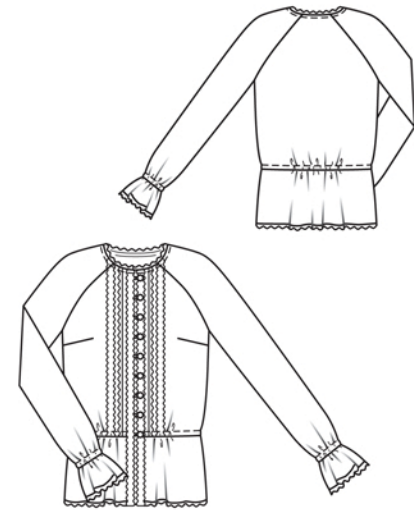
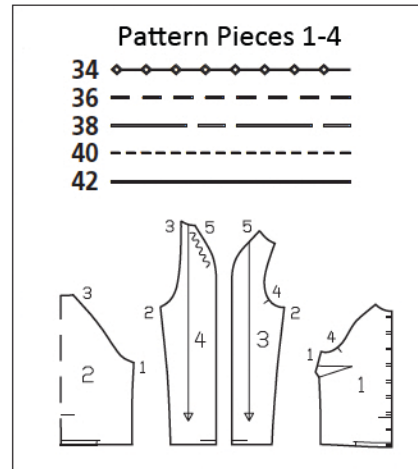
Recommended fabrics: Fine, lightweight blouse fabrics.

Preparations

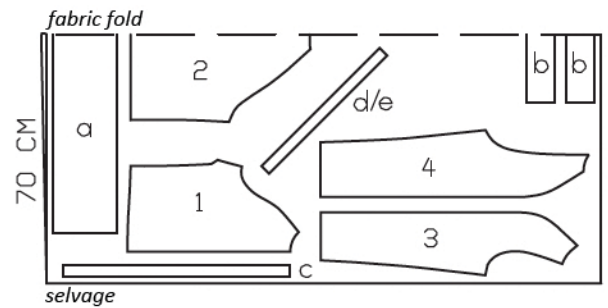
Print the pattern out on letter or A4 sized paper. It is **very** important to not scale or fit any of the pages, you must print the document in **actual size**. Your pattern will print on multiple pages, which you will then tile together. Arrange the sheets on a large, hard and flat surface matching up the numbers and letters (i.e. 6A to 6A). Cut or fold one of the sides and match the edge to it's corresponding side. Then, tape down in place so paper is secure.

Trace the pattern pieces from the pattern sheet following the lines and markings for the correct size and the correct style (128). This pattern also includes pattern pieces, lines and markings for style 126 and 127 that should be ignored.

The markings for the loops on piece 1 are for size 34. For the other sizes, move the top marking up according to the neck edge. The bottom marking is the same for all sizes. Space the other markings evenly in between.



Cut from a double layer of fabric, right side facing in. Use fabric with a width of 140cm.



Cutting Out

| | |
|-------------------|----|
| 1 front | 2x |
| 2 back, on a fold | 1x |
| 3 front sleeve | 2x |
| 4 back sleeve | 2x |

Draft the following pieces NOT included in the pattern:

a) peplum, 108 – 112 – 116 – 120 – 124 cm (42 1/2 – 44 1/2 – 45 3/4 – 47 1/4 – 49 ins) long, 18 cm (7 1/8 ins) wide,

b) 2 sleeve frills, 37 – 38 – 39 – 40 – 41 cm (14 1/2 – 15 – 15 1/2 – 15 3/4 – 16 1/4 ins) long, 8 cm (3 1/4 ins) wide,

c) right facing/left underlap, each 63.5 – 64.5 – 65.5 – 66.5 – 67 cm (25 – 25 1/2 – 25 7/8 – 26 1/4 – 26 1/2 ins) long, 3.5 cm (1 1/2 ins) wide, finished width 1.7 cm (5/8 in),

d) bias strip for neck edge, 46 – 47 – 48 – 49 – 50 cm (18 1/8 – 18 1/2 – 19 – 19 1/4 – 19 3/4 ins) long, 3 cm (1 1/4 ins) wide (incl. allowances),

e) bias strip for 9 loops, 45 cm (17 3/4 ins) long, 2 cm (3/4 in) (incl. allowances).

burda style magazine patterns do not have seam allowance included.

To be added:

Seams and edges 1.5 cm (5/8 in).

Sewing

Stitch the bust darts. Press the darts down.

Stitch the side seams and sleeve seams, right sides together. Trim the seam allowances to 7 mm (1/4 in), neaten together, and press onto back.

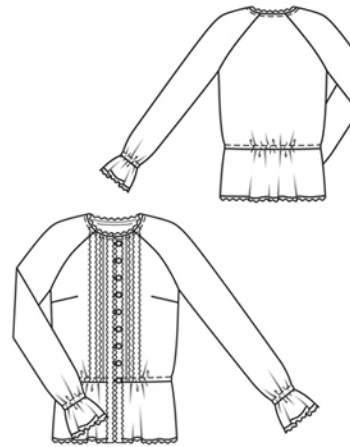
Stitch sleeves to armhole edges. Trim seam allowances and neaten together. Press seam allowances toward sleeves, above underarm curve.

Fold peplum to half the length and mark centre back (fold edge) on upper edge. Measure and mark 16 cm (6 3/8 ins) to each side of centre back. Between markings, gather upper edge to 24 cm (9 1/2 ins). Measure and mark 16 cm (6 3/8 ins) from marked front edges. Between front edge and marking, gather upper edge to 12 cm (4 3/4 ins) each.

Stitch peplum to fronts and to back. Neaten seam allowances together and press up. Stitch from right side near gathering, as marked, to form elastic casing. Pull elastic into respective casings. Stitch ends of elastic in place for a front casing length of 7.5 cm (3 ins) and back casing length of 15 cm (6 ins). Between ends of casing, topstitch the same distance from the seam.

On lower peplum edge, trim allowance to 8 mm (1/4 in) wide. Press allowance to outside, turn half under, and stitch in place. Stitch narrow lace trim to lower peplum edge so that scalloped edge extends, 5 mm (3/16 in) wide.

Loops: Fold bias strip for loops in half lengthwise, right side facing in. Stitch 3 mm (1/8 in) from fold edge. Trim seam allowances to 3 mm (1/8 in) wide. Thread thread ends in a darning needle and knot securely. Push needle through fabric tube, eye end first, to turn right side out. Do not press tube flat. Cut tube into 9 equal pieces. Form these pieces in loops. Pin loops to right front edge as marked. Loop size must match buttons.



Fold facing strip for right front edge in half lengthwise, right side facing in, and stitch across bottom end. Turn facing strip right side out and press. Stitch folded facing to right front edge, over loops – seamed lower edge of facing meets scalloped edge of lace trim. Stitch along front edge. Turn facing to inside and press edge. Baste facing in place.

Fold underlap lengthwise, right side facing in. Stitch across bottom end. Turn underlap right side out and press. Stitch long edges of underlap together to inside front edge of left front, on lower end stitching to scalloped edge of lace trim. Trim seam allowances to 5 mm (3/16 in). Turn underlap forward and press seam allowances onto front.

From wide lace trim cut 2 pieces, each 66 – 67 – 68 – 69 – 70 cm (26 – 26 1/2 – 26 3/4 – 27 1/4 – 27 3/4 ins) long, for front edges. Pin pieces of trim to front edges so that scalloped edge extends 5 mm (3/16 in) past right edge and past left underlap joining seam. Turn in bottom ends of trim. Stitch trim in place along inside edge of scallops. Cut remaining wide trim into 2 equal pieces. Stitch these pieces to fronts, from upper edges to elastic casing and 3 cm (1 1/4 ins) from attached trim. Centre narrow trim between wide trims and stitch in place, down to elastic casing, with scalloped edge pointing toward side.

Neck edge: Fold bias strip for neck edge lengthwise, right side facing out, and press. Pin folded bias strip to neck edge so that fold edge of strip lies on garment piece, 8 mm (1/4 in) past seam line. Stitch along marked neck edge. Trim seam allowances. Turn bias strip up and turn ends under. Turn bias strip to inside and press edge. Topstitch 7 mm (1/4 in) from neck edge. Stitch narrow trim to wrong side of neck edge, turning ends of trim under.

On each sleeve frill piece, stitch narrow edges together. Trim seam allowances, neaten together, and press to one side. Trim allowance at lower edge of each frill to 8 mm (1/4 in) wide, press to outside, turn half under, and stitch. Stitch narrow lace trim to lower edge with scalloped edge extending. Turn ends of trim under. Gather frills and stitch to lower sleeve edges. Neaten allowances together and press up. Stitch as marked, to form elastic casing, leaving an opening in seam, for elastic. Pull elastic into casing. Sew ends together to a circumference of 17.5 – 18 – 18 – 19 – 19.5 cm (7 – 7 1/8 – 7 1/8 – 7 1/2 – 7 3/4 ins). Sew seam openings closed.