

### 125 Trousers

Sizes 36, 38, 40, 42, 44

Side length 108 cm (42 1/2 ins)

Trousers edge is 1 cm (3/8 in) below waist

Hem circumference 60 cm (24 ins)

### Materials

Wool fabric with a textured surface,  
width: 150 cm (59 ins)

length: 1.45 – 1.45 – 2.05 – 2.05 – 2.05 m  
(1 3/4 – 1 3/4 – 2 1/4 – 2 1/4 – 2 1/4 yds).

A piece of lining, approx. 45 x 30 cm (18 x 12 ins),  
for pocket pieces.

Interfacing.

1 invisible zip, 22 cm (9 ins) long.

6 buttons.

Recommended fabrics: Trousers fabrics of wool or  
blends.

### Preparations

Print the pattern out on letter or A4 sized paper.  
It is very important to not scale or fit any of the  
pages, you must print the document in  
actual size. Your pattern will print on multiple  
pages, which you will then tile together. Arrange  
the sheets on a large, hard and flat surface  
matching up the numbers and letters (i.e. 6A to  
6A). Cut or fold one of the sides and match the  
edge to it's corresponding side. Then, tape down  
in place so paper is secure.

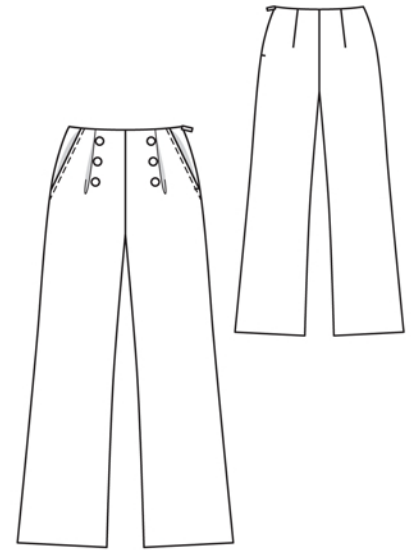
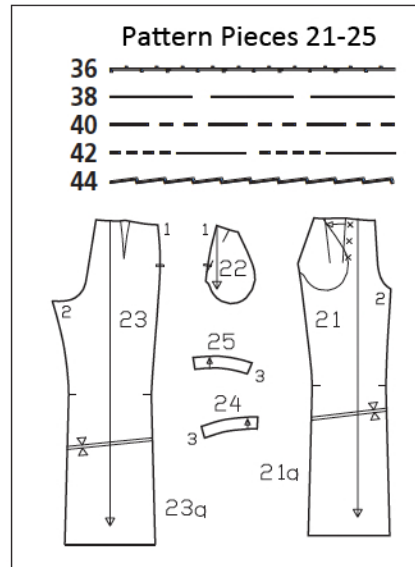
Trace the pattern pieces from the pattern sheet  
following the lines and markings for the correct  
size and the correct style (125). This pattern also  
includes pattern pieces, lines and markings for  
style 124 that should be ignored.

Trace the pocket piece from piece 21 as a sepa-  
rate pattern piece – it is the same for all sizes.

**burda style magazine patterns do  
not have seam allowance included.**

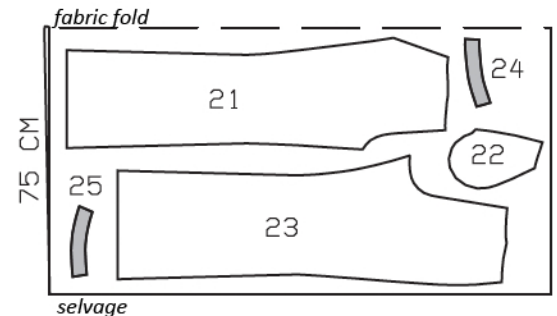
To be added:

Seams and edges 1.5 cm (5/8 in),  
hem 4 cm (1 5/8 ins).

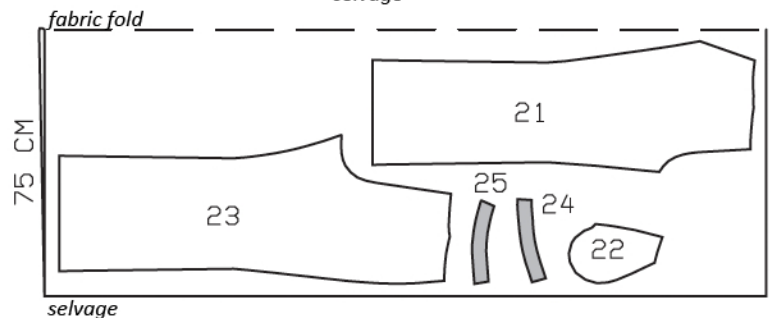


Sizes 36, 38

Cut from a double layer  
of fabric, right side facin  
in. Use fabric with a  
width of 150cm.



Sizes 40-44



### Cutting Out

21 front trouser piece	2x
22 side hip yoke with integrated pocket piece	2x
23 back trouser piece	2x
24 front facing	2x
25 back facing	2x

Lining: pocket piece (piece 21) 2x.

Interfacing: See shaded area on pattern  
layout.

## Sewing

On front trouser pieces, lay pleats in direction of arrows and baste in place, approx. 15 cm (6 ins) long, beginning at upper edge. Press pleats. On back trouser pieces, stitch darts and press toward centre back.

**Hip yoke pockets:** Stitch pocket pieces right sides together with pocket opening edges of front trouser pieces. Turn pocket pieces to inside. Topstitch 7 mm (1/4 in) from pocket opening edges. Pin pocket opening edges to side hip yokes at abutting lines. Stitch edges of pocket pieces together. Baste pocket pieces to wrong side of trouser fronts.

Sew invisible zip to left trouser pieces, see the "Helpful Hint" on next page. Stitch left side seam from lower edge to zip. Press seam allowances open.

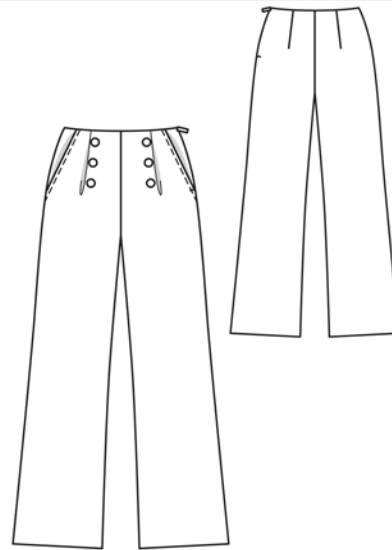
Stitch right side seam and inside leg seams. Pull one trouser leg into the other, with right sides facing. Stitch centre front and back seam as continuous seam. Press seam allowances open from upper edges to beginnings of crotch curve. Do not press seam allowances flat along curve.

Stitch centre front and back seam of facing. Stitch right side seam, as mirror image of trousers seam.

**Upper trousers edge:** Pin facing right sides together with upper trousers edge. At zip slit, turn facing ends back, approx. 5 mm (3/16 in) before slit edge, and pin to upper edge. Turn allowances of slit edges out, over facing, and pin to upper edge. Stitch along upper trousers edge. Turn allowances at opening edges to inside. Turn facing up and stitch to seam allowances, as far as possible, close to seam. Turn facing to inside. Sew to zip tapes and to seams.

Press hem allowances to inside and sew in place by hand.

Sew buttons to front trouser pieces as decoration, catching pleats. Remove basting at pleats.





These special zippers come in various lengths. The zipper should be at least 2 cm (3/4 in) longer than the slit. It is sewn in place before the seam below the slit is stitched. A special presser foot is required to sew the zipper in place.

### **Sewing the zipper in place:**

Open the zipper and push the coil back with your thumbnail to reveal the seam marking between the tape and the coil. Place the open zipper right side down on the right fabric side of one slit edge.

In order to stitch the zipper in place exactly along the marked seam line, you must first calculate the distance between the tape edge and the fabric edge as follows: width of seam allowance minus 1 cm (3/8 in) tape width = distance from edge of fabric. This will yield a value of 5 mm (3/16 in) if the width of the seam allowance is 1.5 cm (5/8 in).

Pin the top end of the zipper tape in place, the calculated distance from the edge of the fabric. The bottom end of the zipper will extend past the marked end of the slit. Place the presser foot on the zipper so that the coil is in the notch to the right of the needle (1). Stitch zipper in place, from the top to the marked end of the slit. Close zipper.

Place the other zipper tape face down on the opposite slit edge and pin in place at the top. Open zipper again. Place the presser foot on the top end of the zipper so that the coil is in the notch to the left of the needle (2). Sew the zipper in place, from the top to the end of the slit. Close zipper.

Now stitch the seam below the zipper, from bottom to top. Turn the loose lower end of the zipper out of the way, over the seam allowance. Stitch as close as possible to the last stitches of the zipper seams. Trim away excess zipper and bind the end with a scrap of fabric.