

115 Dress

Sizes 34, 36, 38, 40, 42

Length from waist in centre front: 56 cm
at centre back: 64 cm

Materials

Batiste,
width: 140 cm (55 ins)
length: 2.50 – 2.55 – 2.55 – 2.60 – 2.60 m
(2 3/4 – 2 7/8 – 2 7/8 – 2 7/8 – 2 7/8 yds).

Interfacing.

1 invisible zip, 60 cm (24 ins) long.

Recommended fabrics: Lightweight dress fabrics.

Preparations

Print the pattern out on letter or A4 sized paper. It is **very important** to not scale or fit any of the pages, you must print the document in **actual size**. Your pattern will print on multiple pages, which you will then tile together. Arrange the sheets on a large, hard and flat surface matching up the numbers and letters (i.e. 6A to 6A). Cut or fold one of the sides and match the edge to it's corresponding side. Then, tape down in place so paper is secure.

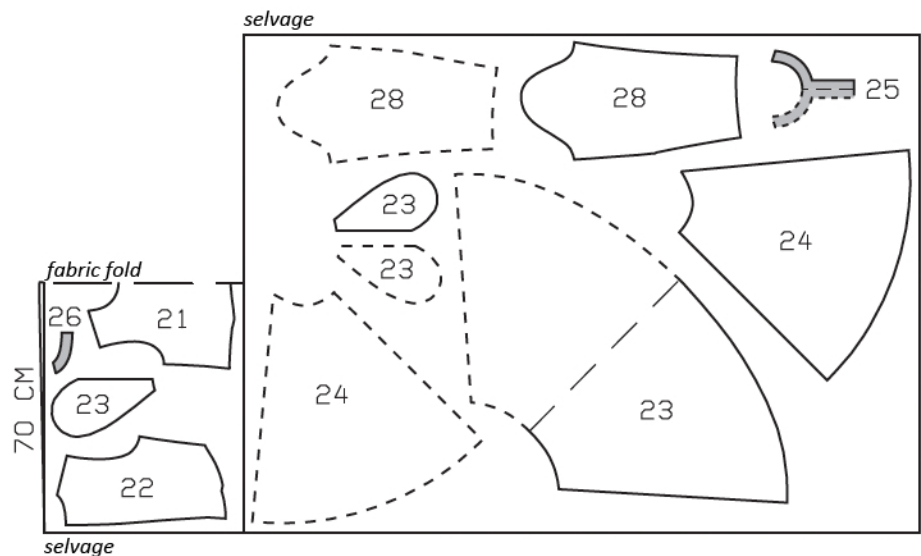
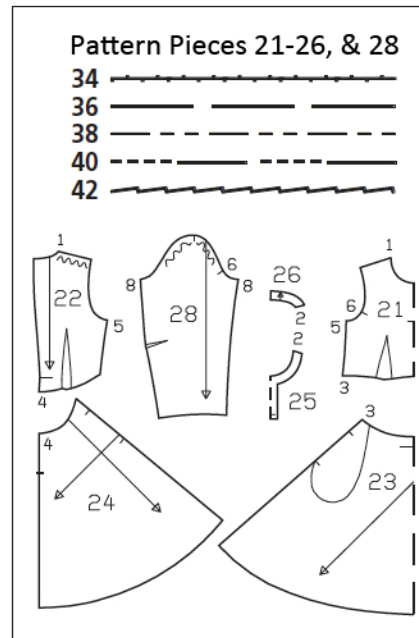
Trace the pattern pieces from the pattern sheet following the lines and markings for the correct size and the correct style (115). This pattern also includes pattern pieces, lines and markings for style 113 and 114 that should be ignored.

Trace the pocket piece from piece 23 as a separate pattern piece – it is the same for all sizes.

burda style magazine patterns do not have seam allowance included.

To be added:

Seams, edges and hem 1.5 cm (5/8 in), sleeve hems 4 cm (1 5/8 ins) (flare sleeve hem allowances).



For 140 cm wide fabric.

Fold the fabric as shown in the pattern layout. Right side faces in on a double layer of fabric; right side faces up on a single layer of fabric. Cut right and left pieces as opposites.

Cutting Out

| | |
|---------------------------------|----|
| 21 front, on a fold | 1x |
| 22 back | 2x |
| 23 front skirt panel, on a fold | 1x |
| pocket piece | 4x |
| 24 back skirt panel | 2x |
| 25 front neck facing, on a fold | 1x |
| 26 back neck facing | 2x |
| 28 sleeve | 2x |

Interfacing: See shaded area on pattern layout. Iron a strip of interfacing, approx. 2 cm (3/4 in) wide, to wrong side of front, over marked slash line. Also iron strips of interfacing, approx. 2 cm (3/4 in) wide, to wrong sides of zip slit edges.

Sewing

Stitch front darts. Lay centre of each dart fold over seam and press from wide end toward point. Stitch back darts and press toward centre back.

Stitch front skirt piece to front piece and stitch back skirt pieces to back pieces. Neaten seam allowances together and press down.

Sew invisible zip to back slit edges, see the "Helpful Hint" on next page. Stitch centre back seam from lower edge to zip.

Stitch side seams, shoulder seams, and facing seams, right sides together. When stitching side seams, do not stitch across pocket openings. Press seam allowances open.

Inseam pockets: Pin pocket pieces right sides together with seam allowances of pocket opening edges. On pocket opening edge, stitch along seam line and above pocket opening, stitch close to side seam. Press pocket pieces forward and stitch together. Lay upper pocket edges flat over skirt attachment seam. Working from outer side, stitch along line of seam, catching pocket edges.

Front slit and neck edge: Pin facing to front, over marked slit, and to neck edge, right sides facing. At zip slit, turn facing back, approx. 5 mm (3/16 in) before slit edge, and pin to neck edge. Turn allowances of back slit edges to outside and pin to neck edge, over facing. Working from inner side, stitch along neck edge and closely around marked front slit. Slash slit between lines of stitching and clip into bottom corners. Trim seam allowances of neck edge. Turn facing and allowances of slit edges to inside and press edges. Sew facing to zip tapes and to shoulder seams.

Stitch sleeve darts. Press darts down. Stitch sleeve seams. Press sleeve hem allowances to inside and sew in place by hand. Set in sleeves, easing sleeve caps.

Turn hem allowance to inside, turn raw edge under, and stitch in place.





These special zippers come in various lengths. The zipper should be at least 2 cm (3/4 in) longer than the slit. It is sewn in place before the seam below the slit is stitched. A special presser foot is required to sew the zipper in place.

Sewing the zipper in place:

Open the zipper and push the coil back with your thumbnail to reveal the seam marking between the tape and the coil. Place the open zipper right side down on the right fabric side of one slit edge.

In order to stitch the zipper in place exactly along the marked seam line, you must first calculate the distance between the tape edge and the fabric edge as follows: width of seam allowance minus 1 cm (3/8 in) tape width = distance from edge of fabric. This will yield a value of 5 mm (3/16 in) if the width of the seam allowance is 1.5 cm (5/8 in).

Pin the top end of the zipper tape in place, the calculated distance from the edge of the fabric. The bottom end of the zipper will extend past the marked end of the slit. Place the presser foot on the zipper so that the coil is in the notch to the right of the needle (1). Stitch zipper in place, from the top to the marked end of the slit. Close zipper.

Place the other zipper tape face down on the opposite slit edge and pin in place at the top. Open zipper again. Place the presser foot on the top end of the zipper so that the coil is in the notch to the left of the needle (2). Sew the zipper in place, from the top to the end of the slit. Close zipper.

Now stitch the seam below the zipper, from bottom to top. Turn the loose lower end of the zipper out of the way, over the seam allowance. Stitch as close as possible to the last stitches of the zipper seams. Trim away excess zipper and bind the end with a scrap of fabric.