

105 Coat

Sizes 36, 38, 40, 42, 44

Back length approx. 110 cm (43 1/2 ins)

Materials

Twill weave wool,

width: 150 cm (59 ins)

length: 2.60 – 2.60 – 2.65 – 2.65 – 2.65 m
(2 7/8 – 2 7/8 – 3 – 3 – 3 yds).

A piece of nappa leather or imitation leather, approx.
60 x 20 cm (24 x 8 ins), for the piping.

Lining,

width: 140 cm (55 ins)

length: 2.05 – 2.05 – 2.10 – 2.10 – 2.10 m (2 3/8 yds).

Vilene/Pellon G 785.

Cord, approx. 5 mm (3/16 in) thick, for the piping:
2.25 – 2.30 – 2.30 – 2.35 – 2.35 m (2 5/8 yds) long.

Recommended fabrics: Coat fabrics of wool or blends.

Preparations

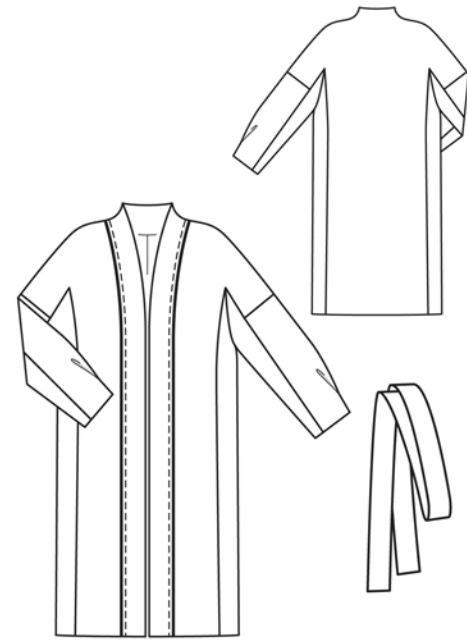
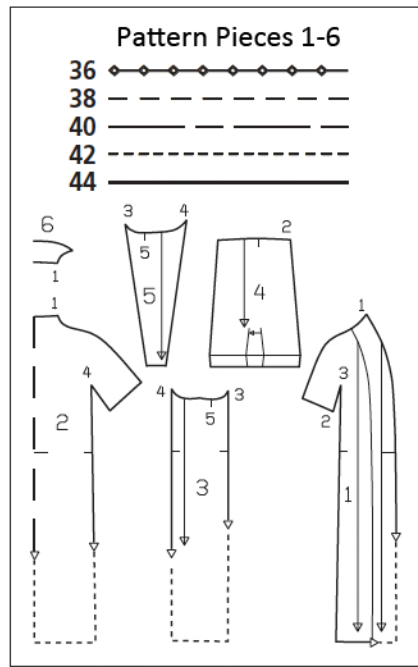
Print the pattern out on letter or A4 sized paper. It is **very important** to not scale or fit any of the pages, you must print the document in **actual size**. Your pattern will print on multiple pages, which you will then tile together. Arrange the sheets on a large, hard and flat surface matching up the numbers and letters (i.e. 6A to 6A). Cut or fold one of the sides and match the edge to it's corresponding side. Then, tape down in place so paper is secure.

Trace the pattern pieces from the pattern sheet following the lines and markings for the correct size and the correct style (105). This pattern also includes pattern pieces, lines and markings for style 104 and 106 that should be ignored. Cut piece 1 apart on the marked seam line = front and front band.

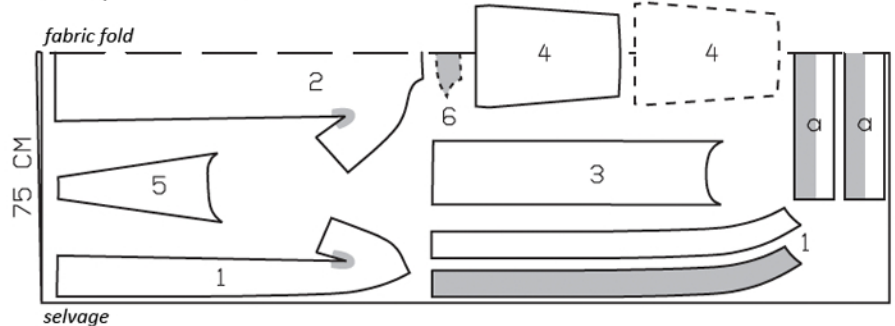
burda style magazine patterns do not have seam allowance included.

To be added:

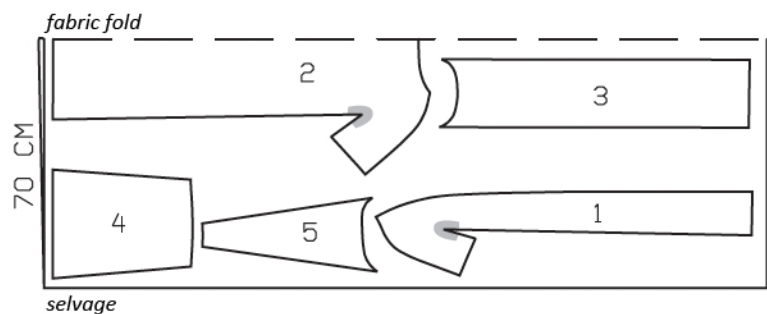
Seams and edges 1.5 cm (5/8 in), hem 4 cm (1 5/8 ins). Sleeve hem allowances are already included on piece 4. Flare hem allowance on piece 5.



Wool, 150cm wide



Lining, 140cm wide



Cut from a double layer of fabric, right side facing in. The sleeves shown extending over the fabric fold should be cut last from a single layer of fabric. Cut right and left sleeves as opposites. Use indicated fabric widths.

Cutting Out

Twill weave wool:

1 front with integrated sleeve	2x
1 front band and as facing	2x
2 back with integrated sleeve, on a fold	1x
3 side piece	2x
4 upper sleeve piece	2x
5 underneath sleeve piece	2x
6 back facing, on a fold	1x

Draft the following pieces NOT included in the pattern:

a) tie belt, a total of 160 – 164 – 168 – 172 – 176 cm (63 – 64 1/2 – 66 1/4 – 67 3/4 – 69 1/4 ins) long, 12 cm (4 3/4 ins) wide, finished width 6 cm (2 3/8 ins).

Leather:

2 piping strips, 111 – 112 – 113 – 114 – 115 cm (43 3/4 – 44 1/4 – 44 1/2 – 45 – 45 1/4 ins) long, 5 cm (2 ins) wide (incl. allowances). If needed, cut shorter pieces and stitch together to reach the required length.

Lining: piece 1 (without front band); piece 2 minus width of facing and with an ease pleat of approx. 2 cm (3/4 in) at centre back; pieces 3, 4 and 5.

Interfacing: See shaded area on pattern layout. Iron interfacing to front facing pieces.

Sewing

Piping: Fold leather strips to half the width, wrong side facing in. Lay the cord inside the fold. Use the zipper foot of your sewing machine to topstitch close to the cord.

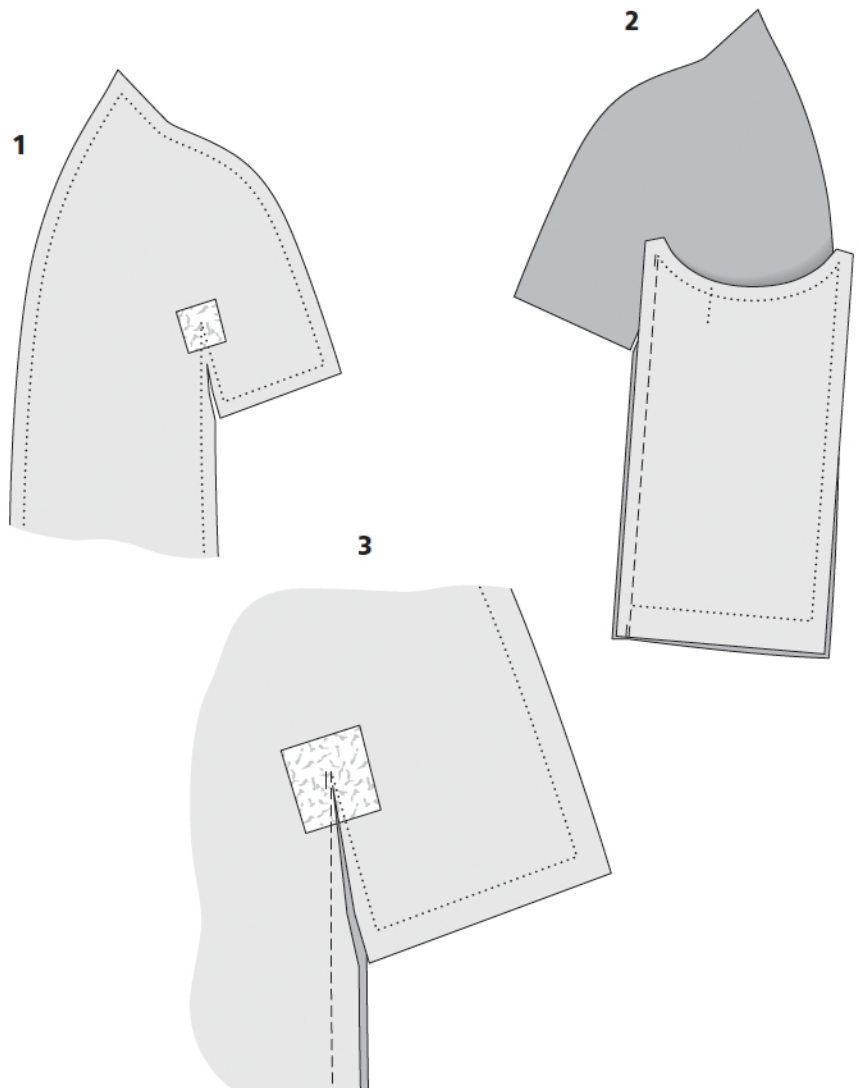
Pin piping to band attachment edges of front pieces so that piping cord lies on garment piece, next to marked seam line. Stitch piping to the seam allowance.

Use your machine's zipper foot to stitch front bands to vertical edges of fronts, catching piping in seams. Press seam allowances onto bands. Topstitch bands close to joining seams.



Front section seams:

Cut between front and attached sleeve to approx. 4 cm (15/8 ins) before corner (image 1). Lay each side piece (piece 3) right sides together with front piece and pin section seam. Stitch, beginning at the top, exactly at point (seam number 3) (image 2). Clip front from end of cut to last stitch (image 3). Press seam allowances open.



Sewing Continued...

Shoulder seams and top sleeve seams:

Lay fronts right sides together with back. Pin shoulder seams and top sleeve seams as continuous seams (seam number 1). Stitch (image 4). Press seam allowances open.

Attach upper sleeve pieces:

Pin each upper sleeve piece right sides together with lower edge of attached sleeve piece (seam number 2) – seam mark on sleeve meets top sleeve seam. Stitch. Press seam allowances open.

Front sleeve seam:

Fold each side piece toward front edge, wrong side facing in. Lay underneath sleeve piece right sides together with attached sleeve front (seam number 3) and upper sleeve piece. Pin front sleeve seam (image 5). Stitch from wrong side of attached sleeve, beginning at the top, exactly at last stitch of front section seam (image 6). Press seam allowances open.

Back sleeve seam:

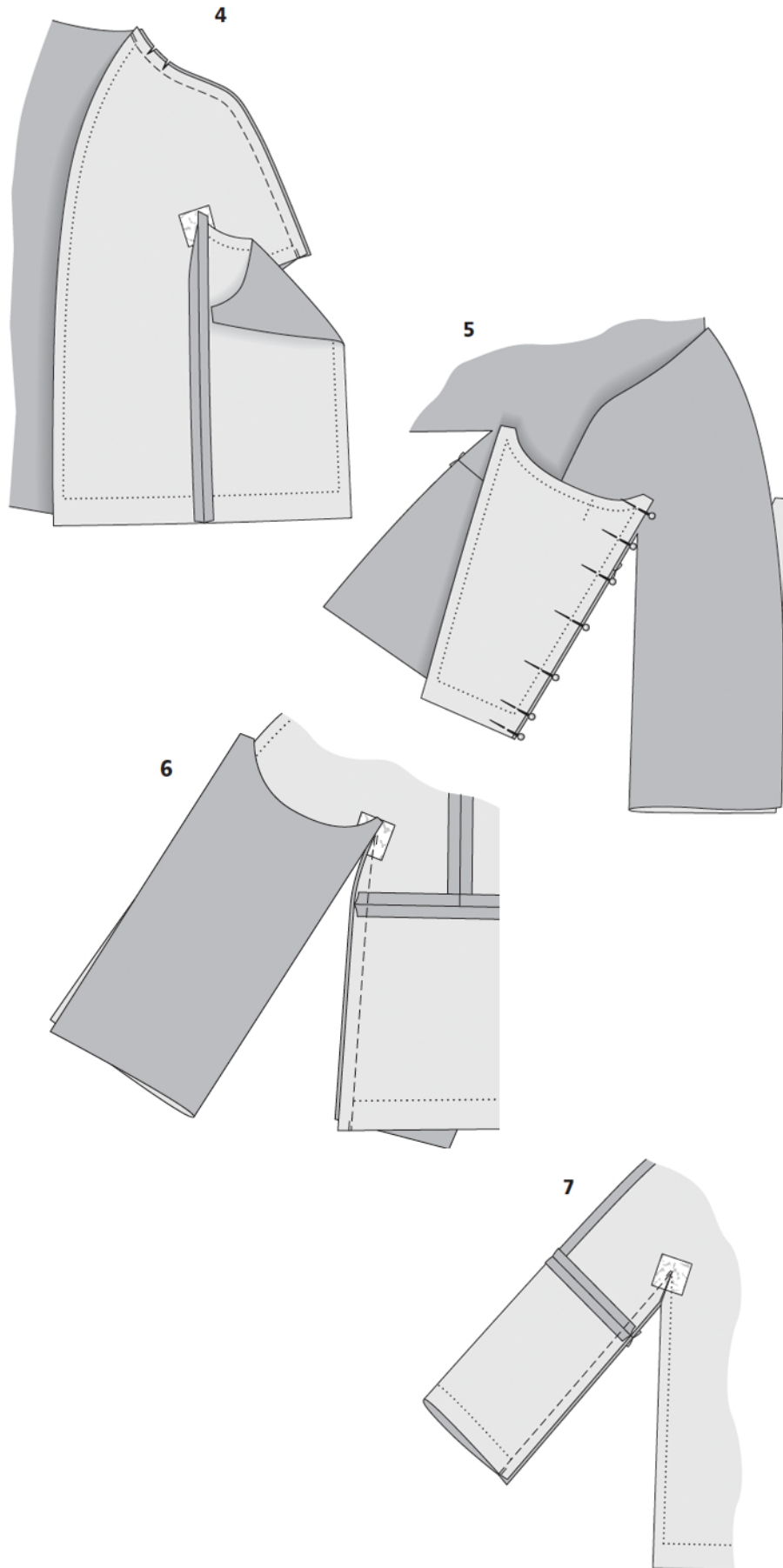
Lay underneath sleeve pieces right sides together with attached back sleeve pieces (seam number 4) and with upper sleeve pieces. Pin back sleeve seam. Stitch, beginning at top, exactly at corner. Interrupt stitching in area of zip teeth. Sew the resulting seam opening closed by hand.

Clip back close to last stitch (image 7). Press seam allowances open.

Turn sleeve right side out.

Back section seams:

Lay each side piece right sides together with back. Pin section seam (seam number 4). Work from side of back piece to stitch seam, beginning at the top, exactly at end of cut (last stitch of back sleeve seam). Press seam allowances open.



Sewing Continued...

Lower sleeve attachment seam:

Work from inner side to stitch pleat in each upper sleeve piece, up to arrow mark. Lay pleats in direction of arrows, press, and baste to lower edge. Lay upper edge of each lower sleeve piece right sides together with upper edge of side piece, matching seam marks 5. Pin lower sleeve piece and side piece together, from corner to corner (seam numbers 3 and 4). Stitch.

Hem:

Press hem allowances on jacket and sleeves to inside but do not yet sew in place.

Lining:

For the ease pleat in lining back, stitch from upper and lower edges, along centre back, each approx. 5 cm (2 ins) long. Press pleat to one side.

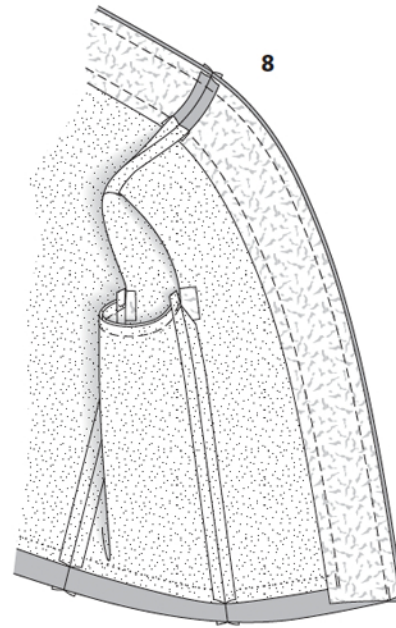
Pin front lining pieces right sides together with inside edges of front facings. Pin back lining piece to lower edge of back facing. Stitch. Press seam allowances onto lining pieces.

Stitch seams of lining as instructed for jacket.

Front edges, neck edge:

Turn hem allowance of jacket down again. Pin facing with lining right sides together with front and back pieces. Stitch along front and neck edges (image 8). Trim seam allowances. Lay facing with lining inside jacket, with wrong sides together, pulling linings into sleeves. Press front and neck edges. Pin shoulder seams of facing and jacket together exactly. Turn lining up and sew seam allowances of shoulder seams together, with a few stitches by hand. Fold hem allowance of jacket to inside again and sew in place loosely by hand. Turn edges of facing and lining under along lower jacket edge. Press fold edge of facing. On lining, only press fold lightly. Push lower lining edge up toward upper edge of hem allowance, in a shallow curve, and pin. Sew lining and lower facing edges to hem allowance.

Sew hem allowance of sleeves in place loosely by hand. Turn sleeve lining edges under and sew to sleeve hem allowances.



Fold tie belt lengthwise, right side facing in. Stitch edges together, leaving a section of seam open, for turning. Turn belt right side out. Sew seam opening closed.