

### 107 Dress

Sizes 36, 38, 40, 42, 44

Length from waist 66 cm (26 ins)

3/4-sleeves, approx. 13 cm (5 ins) shorter than normal

### Materials

Crêpe de chine,

width: 140 cm (55 ins)

length: 2.10 – 2.10 – 2.15 – 2.20 – 2.20 m

(2 3/8 – 2 3/8 – 2 1/2 – 2 1/2 – 2 1/2 yds).

Vilene/Pellon G 785.

Elastic, 18 mm (3/4 in) wide, 0.60 m (3/4 yd) long.

1 invisible zip, 40 cm (16 ins) long

Recommended fabrics: Lightweight dress fabrics.

### Preparations

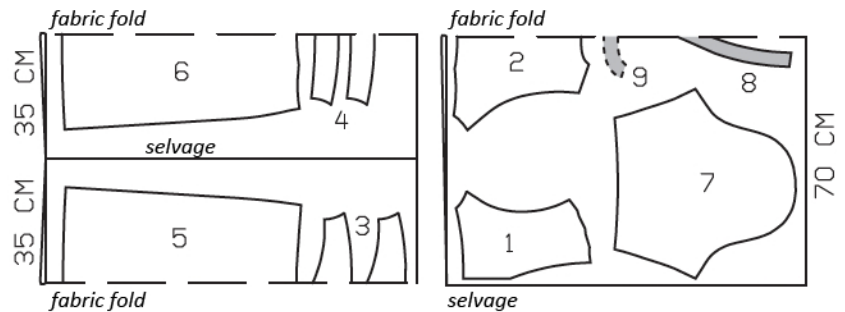
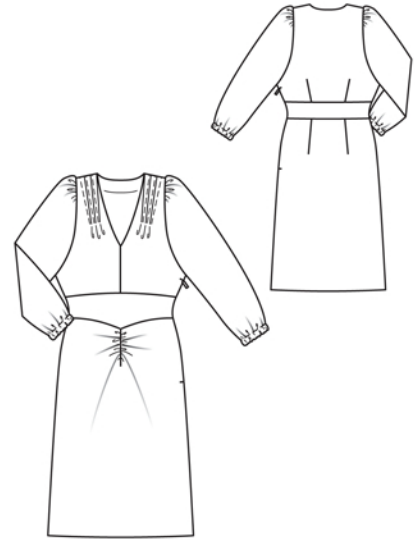
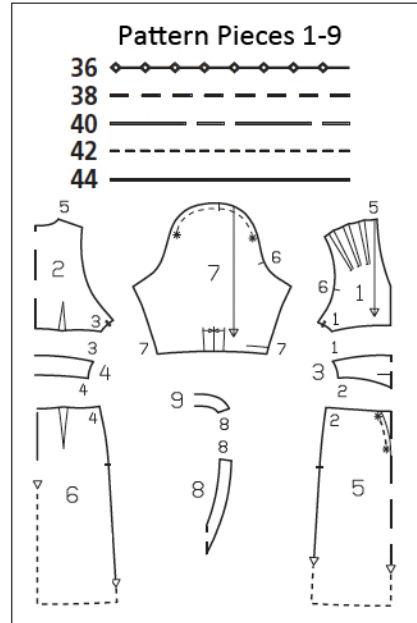
Print the pattern out on letter or A4 sized paper. It is **very important** to not scale or fit any of the pages, you must print the document in **actual size**. Your pattern will print on multiple pages, which you will then tile together. Arrange the sheets on a large, hard and flat surface matching up the numbers and letters (i.e. 6A to 6A). Cut or fold one of the sides and match the edge to it's corresponding side. Then, tape down in place so paper is secure.

Trace the pattern pieces from the pattern sheet following the lines and markings for your size.

**burda style magazine patterns do not have seam allowance included.**

To be added:

Seams and edges 1.5 cm (5/8 in),  
hem and sleeve hems 4 cm (1 5/8 ins) (flare sleeve hem allowance).



Fold the fabric as shown in the pattern layout, right side facing in. Use fabric with a width of 140cm.

### Cutting Out

1 front	2x
2 back, on a fold	1x
3 middle front piece, on a fold	2x
4 middle back piece, on a fold	2x
5 front skirt panel, on a fold	1x
6 back skirt panel, on a fold	1x
7 sleeve	2x
8 front neck facing, on a fold	1x
9 back neck facing, on a fold	1x

**Interfacing:** Iron to wrong sides of facing pieces.

## Sewing

Hand baste along the fold lines for the tucks to make them visible on the right side of the fabric. Fold each front piece on each of these marked fold lines, wrong side facing in. Topstitch as marked on pattern. Press tucks toward centre. Stitch centre front seam, beginning at the top, exactly on seam line of neck edge. Press seam allowances open. Stitch darts in back and press toward centre back.

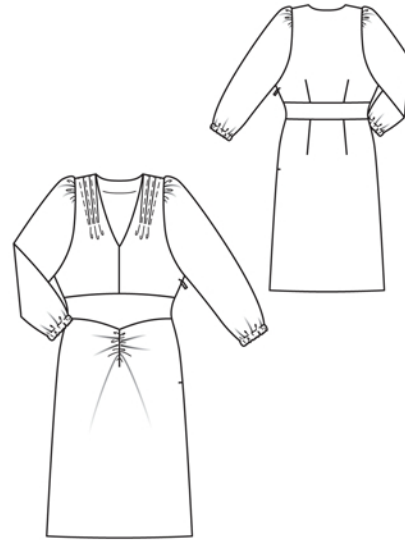
Baste middle front pieces together and middle back pieces together, with wrong side facing right side. Treat these pieces each as one layer of fabric from now on. Stitch middle front piece to front and middle back piece to back. Press seam allowances up.

On front skirt panel, stitch dart at centre front, beginning at the top, exactly on marked seam line. Trim dart allowances to 1 cm (3/8 in) wide and press open, pressing point of dart flat. Machine baste 2 mm (1/8 in) to each side of dart seam, between asterisks. Gather the fabric along the machine basting threads, to a length of 7 cm (2 3/4 ins). Pull thread ends to inside and knot. From a scrap of your fabric, cut a backing strip for the dart, 2 cm (3/4 in) wide and to length of dart. Lay backing strip under dart. Work from outer side of skirt to stitch along line of dart seam. Stitch darts in back skirt panel. Press darts toward centre back.

Stitch middle front piece to front skirt panel and stitch middle back piece to back skirt panel, right sides together. Press seam allowances up.

Stitch shoulder seams on dress and on neck facing. Pin facing right sides together with neck edge. Stitch along line of neck edge. Trim seam allowances. Clip facing allowance at centre front. Turn facing up and stitch to seam allowances, close to seam. Turn facing to inside and sew to shoulder seams.

For the inverted pleat, fold each sleeve on centre pleat line, right side facing in. Stitch outer pleat lines together, from lower edge to arrow. Lay pleats in direction of arrows, press, and baste to lower edge. Gather sleeves and



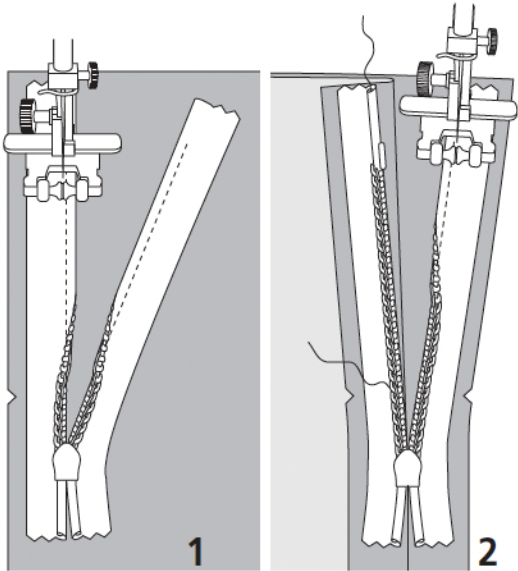
stitch to armhole edges. Press seam allowances toward sleeves.

Stitch right side seam and sleeve seam as continuous seam, leaving sleeve hem allowance open, to insert elastic.

Sew invisible zip to left side edges, between slit marks, see the “Helpful Hint” on next page. Leave top ends of zip tapes loose. Teeth of zip begin at slit mark. Stitch left sleeve seam above hem line and continue stitching to stitch side seam as far as zip. Stitch left side seam from lower edge to zip.

Press sleeve hem allowances to inside, turn raw edges under, and stitch as marked, to form elastic casing. Pull elastic into each casing. Sew ends of each elastic together to a circumference of 24 – 25 – 25 – 26 – 27 cm (9 1/8 – 10 – 10 – 10 1/4 – 10 3/4 ins).

Press hem allowance of skirt to inside and sew in place by hand.



These special zippers come in various lengths. The zipper should be at least 2 cm (3/4 in) longer than the slit. It is sewn in place before the seam below the slit is stitched. A special presser foot is required to sew the zipper in place.

### **Sewing the zipper in place:**

Open the zipper and push the coil back with your thumbnail to reveal the seam marking between the tape and the coil. Place the open zipper right side down on the right fabric side of one slit edge.

In order to stitch the zipper in place exactly along the marked seam line, you must first calculate the distance between the tape edge and the fabric edge as follows: width of seam allowance minus 1 cm (3/8 in) tape width = distance from edge of fabric. This will yield a value of 5 mm (3/16 in) if the width of the seam allowance is 1.5 cm (5/8 in).

Pin the top end of the zipper tape in place, the calculated distance from the edge of the fabric. The bottom end of the zipper will extend past the marked end of the slit. Place the presser foot on the zipper so that the coil is in the notch to the right of the needle (1). Stitch zipper in place, from the top to the marked end of the slit. Close zipper.

Place the other zipper tape face down on the opposite slit edge and pin in place at the top. Open zipper again. Place the presser foot on the top end of the zipper so that the coil is in the notch to the left of the needle (2). Sew the zipper in place, from the top to the end of the slit. Close zipper.

Now stitch the seam below the zipper, from bottom to top. Turn the loose lower end of the zipper out of the way, over the seam allowance. Stitch as close as possible to the last stitches of the zipper seams. Trim away excess zipper and bind the end with a scrap of fabric.